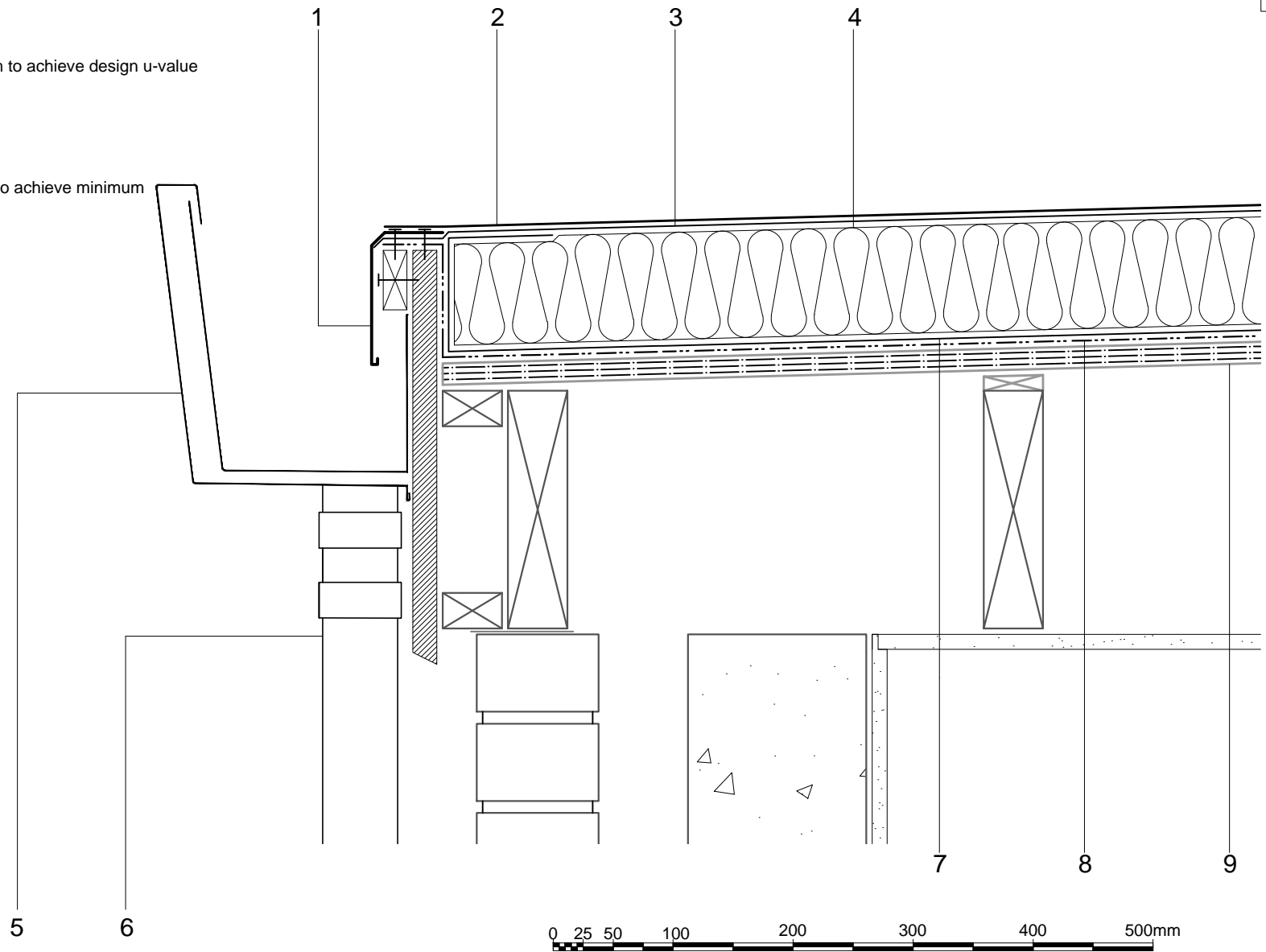


- 1 Axter Axtrim (Drip Trim) perimeter trim
- 2 Axter Excel HR S membrane
- 3 Axter Hyranger SPOT underlayer membrane
- 4 Axter Hytherm (Flat board/tapered) insulation to achieve design u-value and design fall if tapered
- 5 External gutter by specialist contractor
- 6 Downpipe by specialist contractor
- 7 Axter Vap-AI SK vapour barrier
- 8 Axter Vernis Antac ST primer
- 9 18mm WBP plywood deck (Firring on joists to achieve minimum 1:60 drainage falls as required)



Do Not Scale. All dimensions to be checked on site by the Axtershield Installer

Axter provide detail drawings as part of our technical design service. Such drawings should only be used as a guide during the design process and should not be utilised during construction. Axter accepts no liability for misuse of this service.

PROJECT	STANDARD DETAIL
CLIENT	STANDARD DETAIL

DRAWING		
AXTER EXCEL/SPOT SYSTEM AXTRIM (DRIP TRIM) TO EXTERNAL GUTTER DETAIL		
DWG.No	SCALE	DATE
WR.70.P.11	1:5 @ A4	01.11

AXTER LTD  
 West Road, Ransomes  
 Europark, Ipswich,  
 Suffolk, IP3 9SX.  
 Tel:(01473)724056  
 Fax:(01473)723263  
 info@axterltd.co.uk

