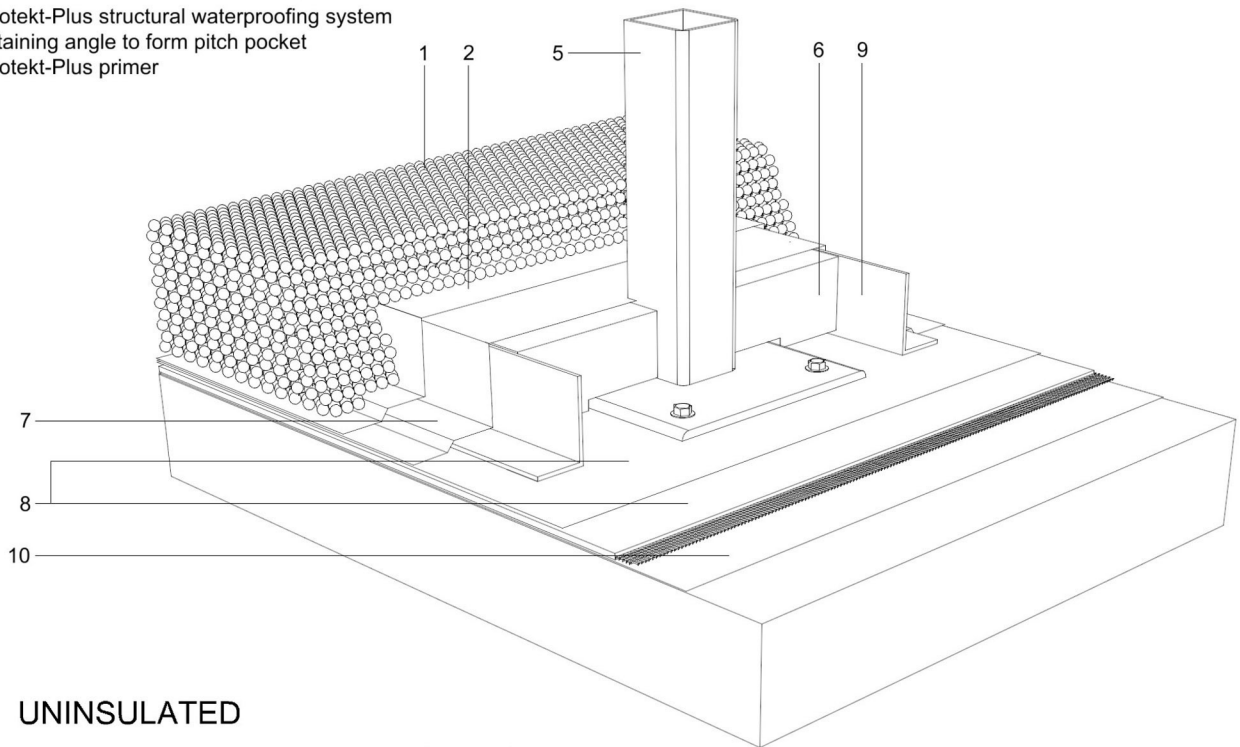
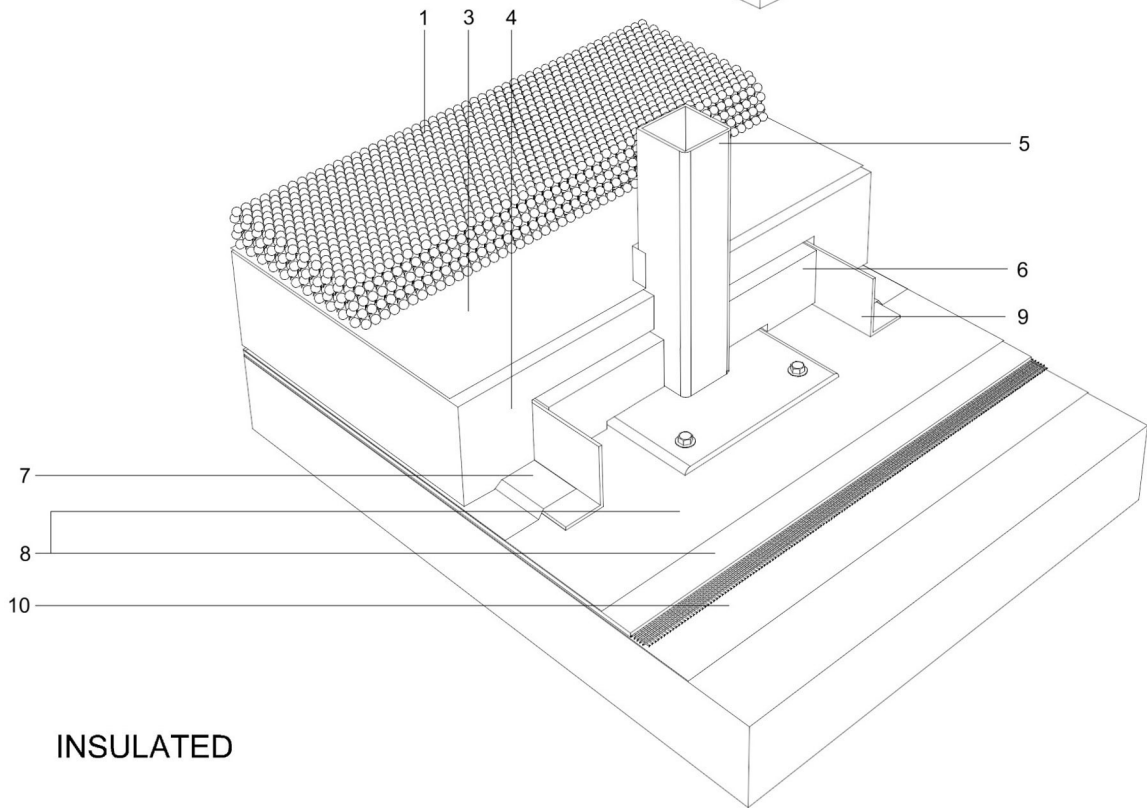


- 1 20-40mm rounded aggregate with no fines installed to a min. depth of 50mm
- 2 Filtration layer
- 3 Axter breather membrane sealed with tape
- 4 Axter inverted insulation to achieve design U-value
- 5 Steelwork by specialist contractor
- 6 Wilotekt-Plus elastomer bitumen compound
- 7 Wilotekt-Plus detail membrane
- 8 Wilotekt-Plus structural waterproofing system
- 9 Retaining angle to form pitch pocket
- 10 Wilotekt-Plus primer



UNINSULATED



INSULATED

PROJECT	CLIENT	DRAWING WILOTEKT-PLUS SYSTEM PITCH POCKET DETAIL	
Axter provide detail drawings as part of our technical design service. Such drawings should only be used as a guide during the design process and should not be utilised during construction. Axter accepts no liability for misuse of this service.	DWG.N° W50.11		AXTER LTD West Road, Ransomes Europark, Ipswich, Suffolk, IP3 9SX. Tel:(01473)724056 Fax:(01473)723263 info@axterltd.co.uk
	SCALE NTS	DATE	