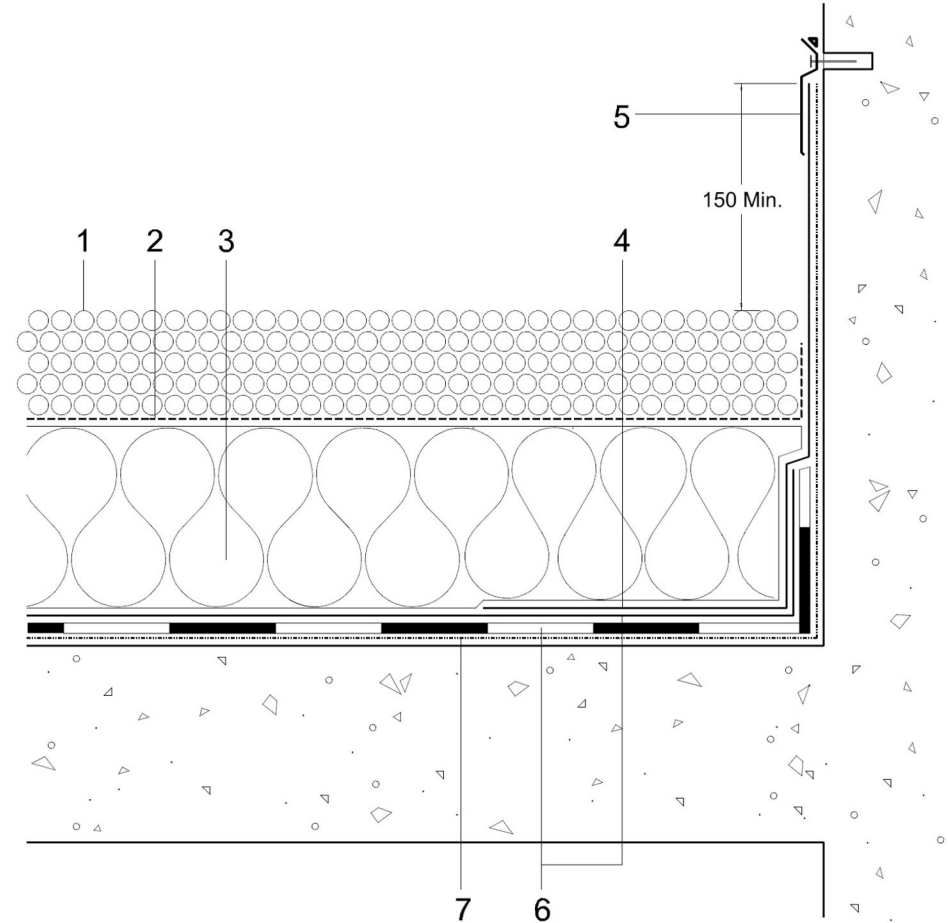
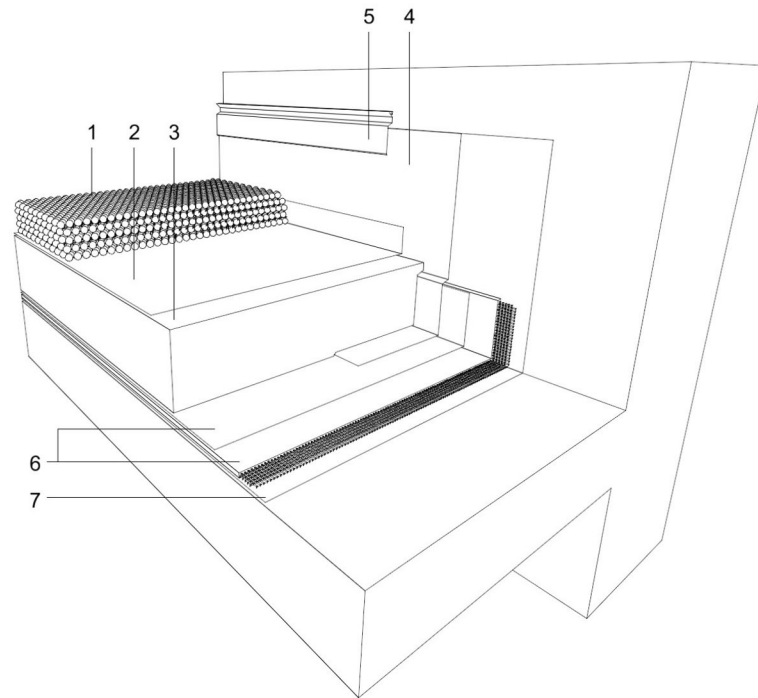


- 1 20-40mm rounded aggregate ballast with no fines installed to a min. depth of 50mm
- 2 Axter breather membrane sealed with tape
- 3 Axter inverted insulation to achieve design U-value
- 4 Wilotekt-Plus detail membrane
- 5 Axter termination bar to suit building construction
- 6 Wilotekt-Plus structural waterproofing system
- 7 Wilotekt-Plus primer



Do Not Scale. All dimensions to be checked on site by the Axtersheid Installer

Axter provide detail drawings as part of our technical design service. Such drawings should only be used as a guide during the design process and should not be utilised during construction. Axter accepts no liability for misuse of this service.

PROJECT	
CLIENT	

DRAWING	WILOTEKT-PLUS UPSTAND WITH TERMINATION BAR DETAIL (OPTION B)		
DWG.N°	W60.11 Option B	SCALE	NTS
		DATE	

AXTER LTD
 West Road, Ransomes
 Europark, Ipswich,
 Suffolk, IP3 9SX.
 Tel:(01473)724056
 Fax:(01473)723263
 info@axterltd.co.uk

