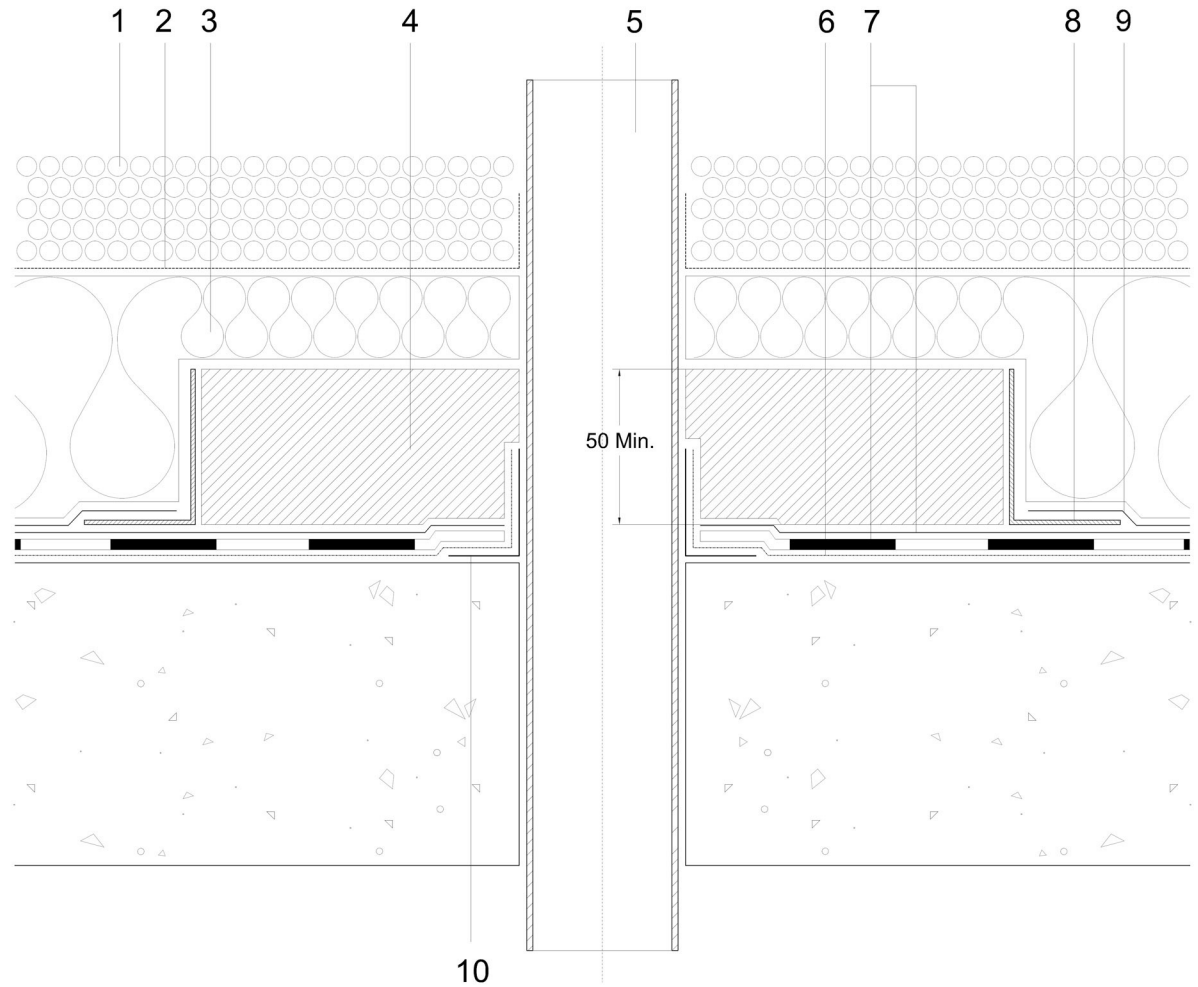
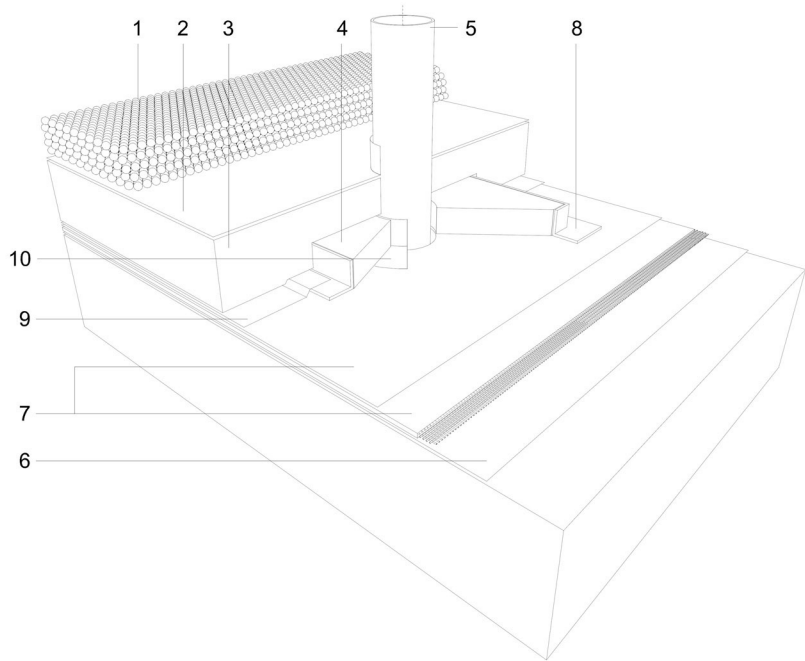


- 1 20-40mm rounded aggregate ballast with no fines installed to a min. depth of 50mm
- 2 Axter breather membrane sealed with tape
- 3 Axter inverted insulation to achieve design U-value
- 4 Wilotekt-Plus elastomer bitumen compound to form pitch pocket
- 5 Cold pipe by specialist contractor
- 6 Wilotekt-Plus primer
- 7 Wilotekt-Plus structural waterproofing system
- 8 Bonded retaining angle
- 9 Wilotekt-Plus detail membrane
- 10 Stickback tape



Do Not Scale. All dimensions to be checked on site by the Axtersheid Installer

Axter provide detail drawings as part of our technical design service. Such drawings should only be used as a guide during the design process and should not be utilised during construction. Axter accepts no liability for misuse of this service.

PROJECT	
CLIENT	

DRAWING		
WILOTEKT-PLUS COLD PIPE PENETRATION DETAIL		
DWG.N°	SCALE	DATE
W90.11	NTS	

AXTER LTD  
West Road, Ransomes  
Europark, Ipswich,  
Suffolk, IP3 9SX.  
Tel:(01473)724056  
Fax:(01473)723263  
info@axterltd.co.uk

