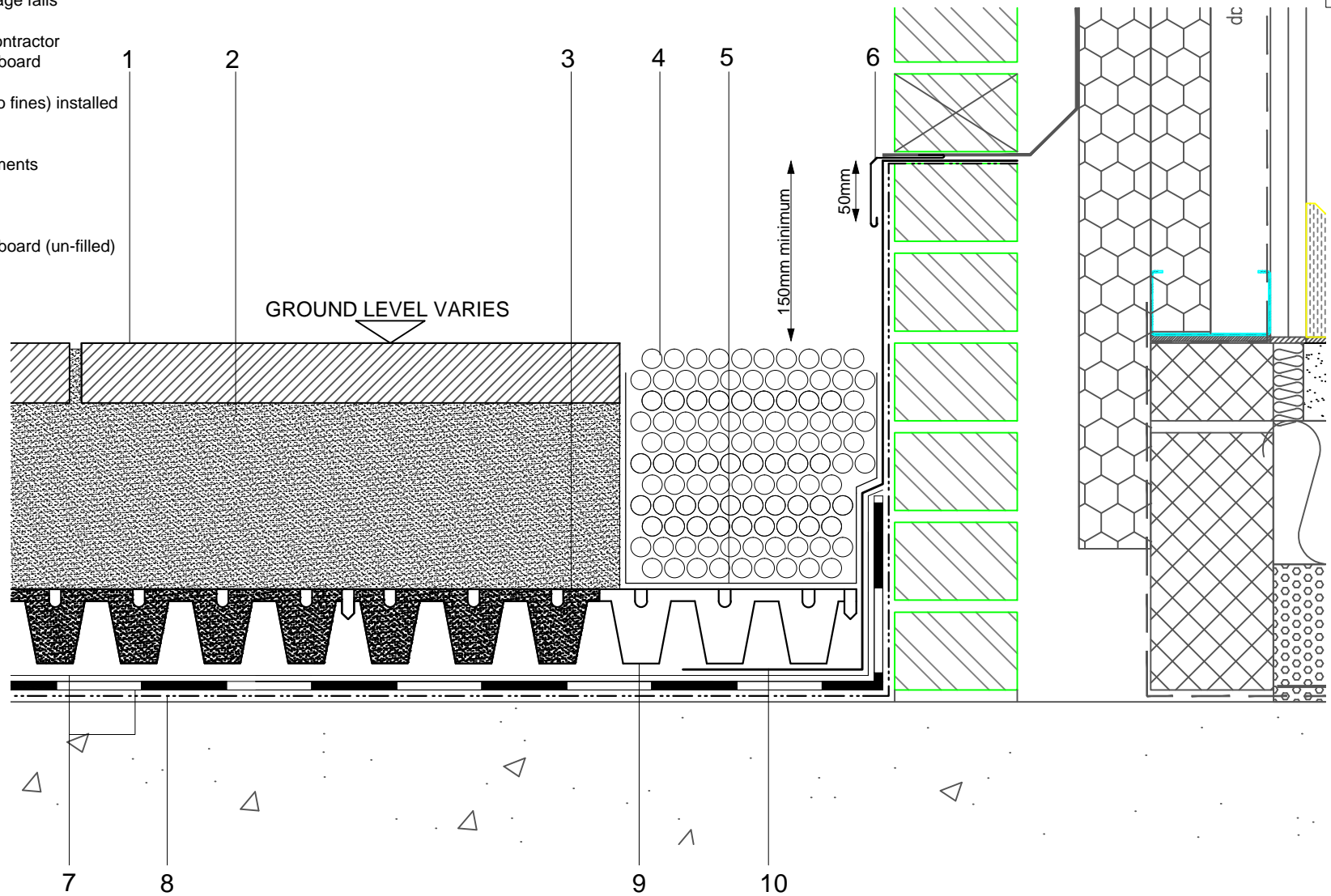


- 1 Paving slabs laid to appropriate drainage falls by the landscape contractor
- 2 Paving bedding layer by landscape contractor
- 3 Axter Bac Canalis reservoir/drainage board (filled with bedding material)
- 4 20-40mm diameter washed ballast (no fines) installed to a minimum depth of 50mm
- 5 Axter filter layer
- 6 Metal flashing to suit building requirements
- 7 Wilotekt-Plus Structural waterproofing system
- 8 Axter Wilotekt primer
- 9 Axter Bac Canalis reservoir/drainage board (un-filled)
- 10 Axter detail membrane



Do Not Scale. All dimensions to be checked on site by the Axtershield Installer

Axter provide detail drawings as part of our technical design service. Such drawings should only be used as a guide during the design process and should not be utilised during construction. Axter accepts no liability for misuse of this service.

PROJECT	STANDARD DETAIL
CLIENT	STANDARD DETAIL

DRAWING	WILOTEKT PLUS PODIUM DECK UPSTAND DETAIL (HARD-BED PAVING FINISH)		
DWG.NO	W.PD.C.0411	SCALE	1:5 @ A4
DATE	04.11		

AXTER LTD  
 West Road, Ransomes  
 Europark, Ipswich,  
 Suffolk, IP3 9SX.  
 Tel:(01473)724056  
 Fax:(01473)723263  
 info@axterltd.co.uk

