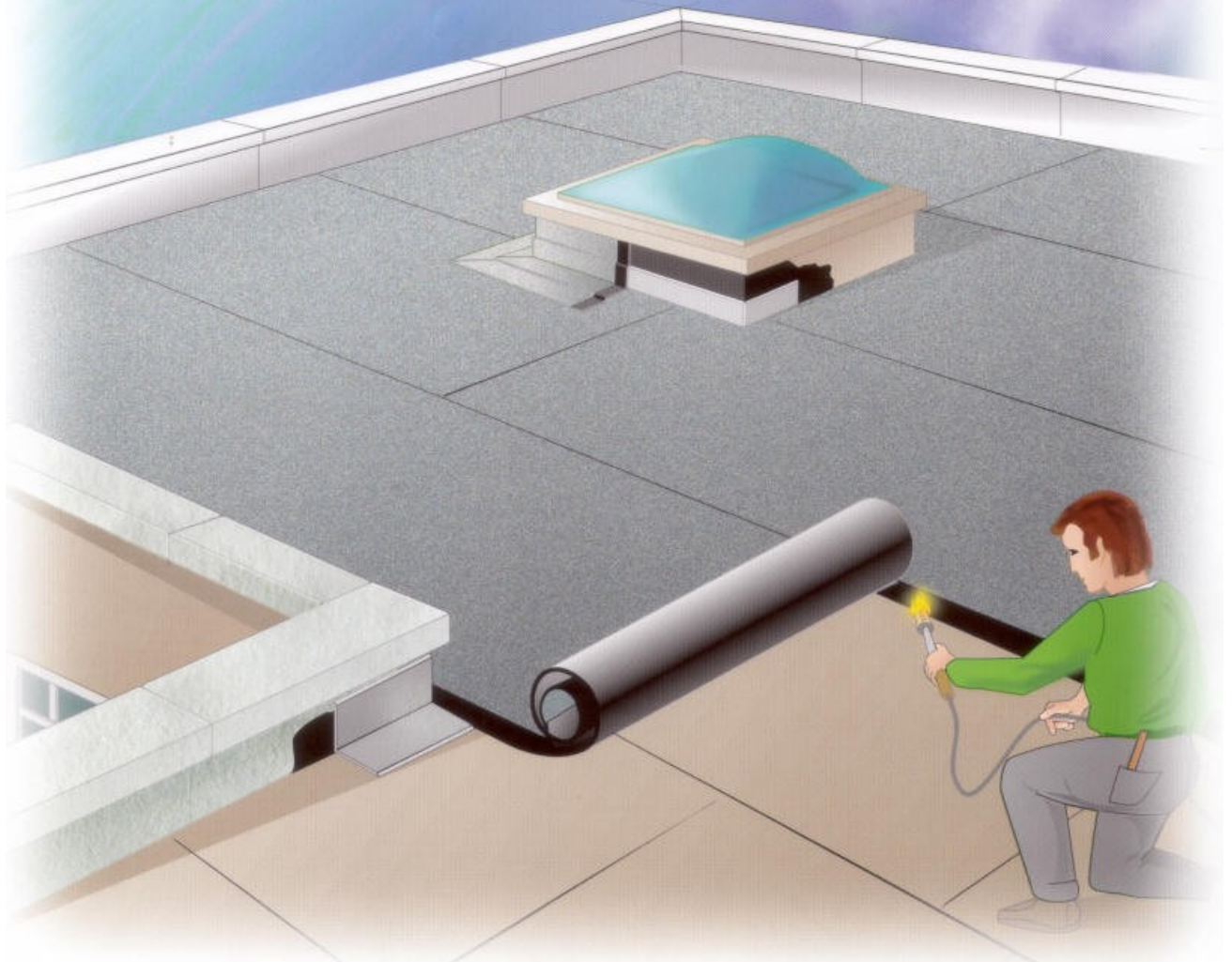


INTERNATIONAL

# FORCE<sup>®</sup> LINE RE

Self-protected single-layer systems



  
**AXTER**

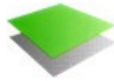


## USAGE

FORCE® LINE RE is used in single- or multi-layer systems on limited-access exposed roofs and terraces on the following decks:

- concrete,
- thermal insulation,
- timber or wooden panels.

FORCE® LINE RE can also be used for renovation.



## PRODUCT

FORCE® LINE 3, 4, or 4.5 RE is a membrane based on elastomeric SBS bitumen.

- FORCE® LINE RE membranes are reinforced with stabilised polyester providing stability and good resistance to tearing and deformation.

The surface is covered with granules or natural grey slates and the undersurface is covered with a plastic film.



## ADVANTAGES

- Dimension stability: at 80°C = 0.3%.
- Temperature resistance: from -20° to 120°C.
- Resistance to heat according to UEAtc (EEC standards).



## APPLICATION

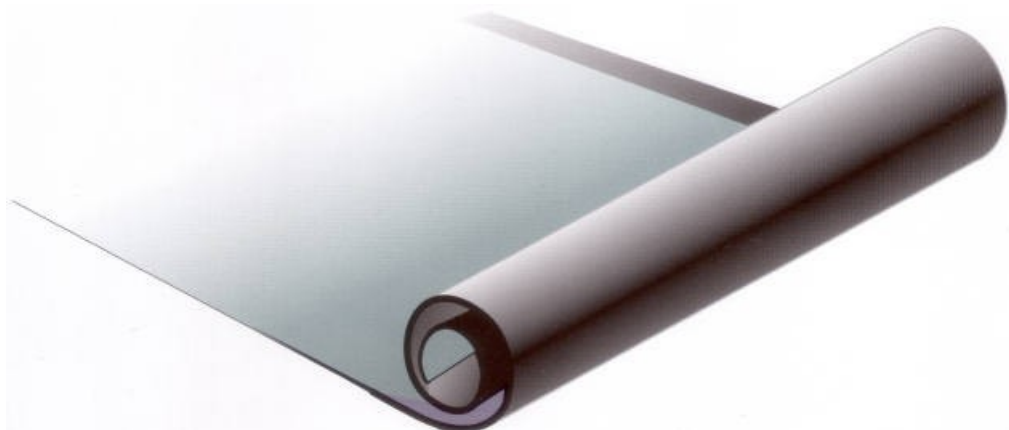
Torch-on application with torch gun only.

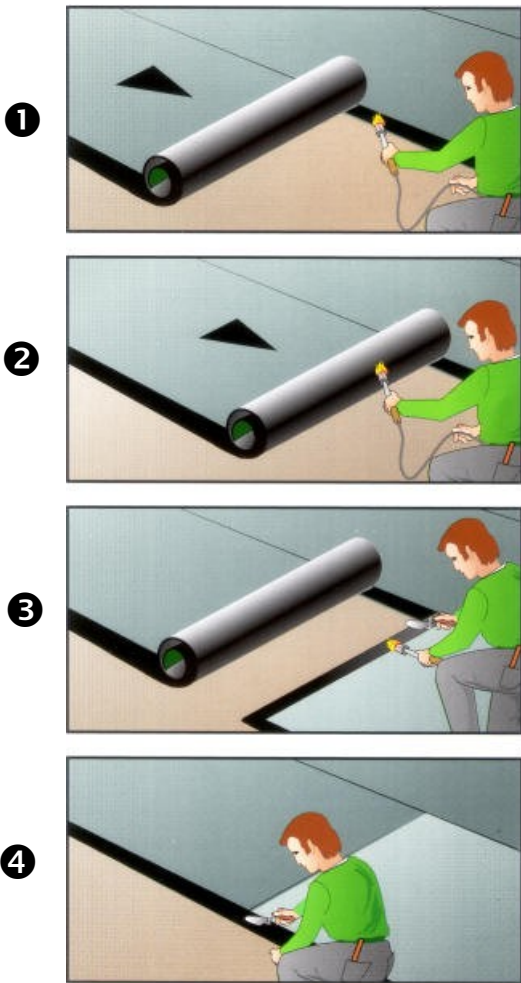
### ■ Main area (sketches 1 & 2)

- ① - Application of the 1<sup>st</sup> sheet:
  - Roll up the sheet.
  - Heat the undersurface.
  - The plastic film on the undersurface must completely melt.
- ② - Application of the 2<sup>nd</sup> and the following sheets:
  - Partially unroll to put the roll straight, then re-roll and torch the plastic film on the edge in order to partially cover the first sheet.
  - Fully torch-on on the deck and the previous sheet at the same time.

### ■ Endlaps (sketches 3 & 4)

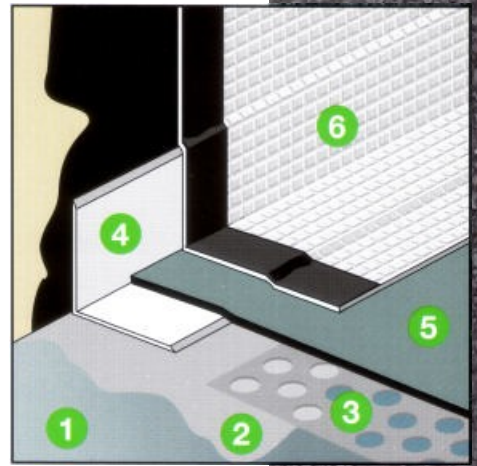
- ③ - Torched-on 10cm overlaps:
  - First of all, press the end of the roll already in place with a warmed spatula and gently heat up the granules over a 10cm width and press into the bitumen.
  - When the overlapping is complete, it is very important to bevel the side of the 2 sheets with a warmed spatula.
- ④ - Carefully press the edges and spread the excess of bitumen over the joints.
  - Lay the rolls in a staggered pattern.





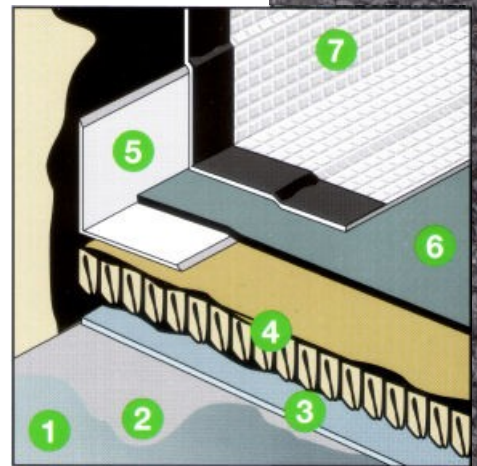
### APPLICATION ON TERRACES

- ❶ Concrete deck
- ❷ VERNIS ANTAC® primer
- ❸ THERMECRAN® perforated layer
- ❹ Angle reinforcement
- ❺ FORCE® LINE RE
- ❻ PAXALPHA® 50 TS or FORCE® LINE 3, 4, 4.5



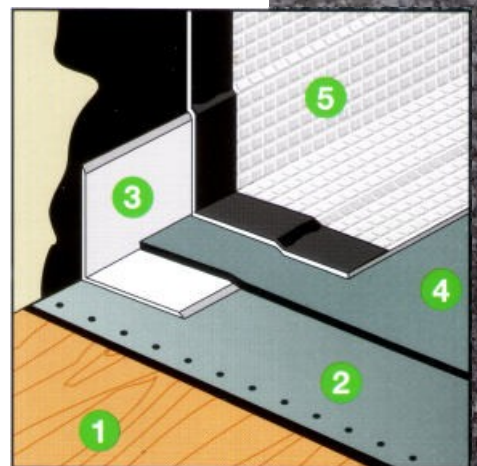
### CONCRETE DECK WITH INSULATION

- ❶ Concrete deck
- ❷ VERNIS ANTAC® primer
- ❸ Vapour barrier
- ❹ Insulation
- ❺ Angle reinforcement
- ❻ FORCE® LINE RE
- ❼ PAXALPHA® 50 TS or FORCE® LINE 3, 4, 4.5



### WOODEN DECK

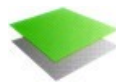
- ❶ Wooden deck
- ❷ Nailed underlay
- ❸ Angle reinforcement
- ❹ FORCE® LINE RE
- ❺ PAXALPHA® 50 TS or FORCE® LINE 3, 4, 4.5





## PRESENTATION AND PACKAGING

- FORCE® LINE 3 RE  
Roll: 10 m × 1 m  
Thickness: 3 mm  
Weight: 33 kg per roll  
Packaging: pallets of 25 rolls
- FORCE® LINE 4 RE  
Roll: 10 m × 1 m  
Thickness: 4 mm  
Weight: 44 kg per roll  
Packaging: pallets of 20 rolls
- FORCE® LINE 4.5 RE  
Roll: 8 m × 1 m  
Thickness: 4.5 mm  
Weight: 41.5 kg per roll  
Packaging: pallets of 23 rolls



## COMPLEMENTARY PRODUCTS

- VERNIS ANTAC PRIMER
- Angle reinforcement
- THERMECRAN®
- PAXALPHA® 50 TS

Axter Ltd  
West Road  
Ransomes Europark  
Ipswich  
Suffolk  
IP3 9SX

tel: 01473 724 056  
fax: 01473 723 263  
email: [sales@axterltd.co.uk](mailto:sales@axterltd.co.uk)  
web: [www.axter.co.uk](http://www.axter.co.uk)

