

TECHNICAL DATA SHEET

AXTER OUTLETS and LEAF GUARDS

Jan 2018

Axter offers a high quality roof drain system designed for new build and refurbishment.

Axter outlets are manufactured from 0.7mm stainless steel with a factory bonded flange providing an excellent bonding area. Certain sizes (62mm, 95mm and 145mm) are more commonly used in refurbishment applications and the 'O' ring supplied provides an excellent seal whilst still allowing for movement.

The pipe length is 300mm or 600mm on Rainwater Outlets, 400mm on Parapet Outlets and 280mm on the bottom unit of the Dual Outlet and 650mm for Sump Outlets.

Membrane Bonding

Axter outlets have a large 500mm square high quality bituminous or 350mm square PVC membrane flange to provide an excellent bonding area (as well as a bituminous flange at VCL level for our Dual Outlet).

RAINWATER OUTLET – PERFORMANCE

Outlet Ø	To suit pipe (in mm)*	Pitch <1:80**	Pitch >1:80**
50mm	58-64	50-90m ² roof area	20-40m ² roof area
62mm	69-73	60-160m ² roof area	20-65m ² roof area
75mm	82-95	90-160m ² roof area	35-70m ² roof area
95mm	103-109	105-200m ² roof area	45-85m ² roof area
110mm	120-128	135-245m ² roof area	55-100m ² roof area
145mm	150-157	250-300m ² roof area	100-125m ² roof area
160mm	170-178	300-370m ² roof area	125-155m ² roof area

(also available in 40, 70, 80, 90 and 125mm external diameter)

* Internal diameter of the pipe



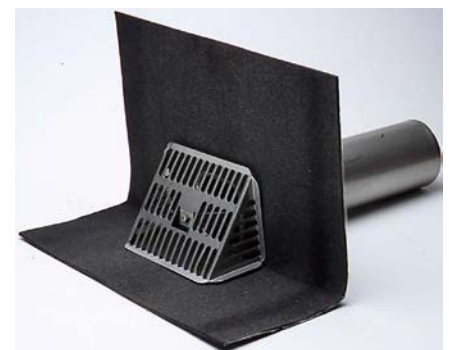
PARAPET OUTLET – PERFORMANCE

Parapet outlet	Pitch<1:80	Pitch >1:80
(b) 50mm	20-28m ² roof area*	6-11m ² roof area*
(a) 40x40mm		
(b) 75mm	32-44m ² roof area*	11-18m ² roof area*
(a) 65x65mm		
(b) 110mm	48-66m ² roof area*	18-27m ² roof area*
(a) 90x90mm		

(a) = mouth of the outlet where the flange is, (b) = diameter of the pipe.

*Estimated figures, exact area dependant on the location in the country.

Contact Axter Limited for more information.



WIDE PARAPET OUTLET

Axter's Wide parapet outlet (currently only available with an SBS flange) is 200mm x 50mm and used where an increased flow rate (2.02l/s) is required, a 90° pipe angle (made to order) and extra-large leafguard are also available to be used with this unit.



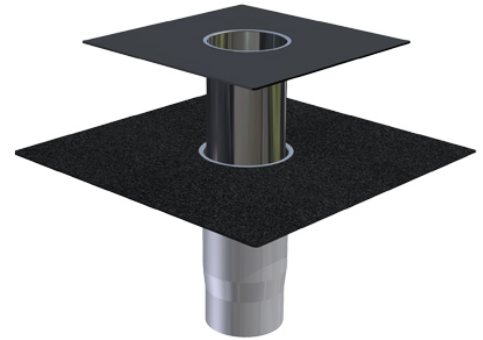
DUAL OUTLETS

The Dual Outlet consists of two parts. The lower outlet connects to the VCL to create an effective seal. The upper outlet is a standard Rainwater Outlet that is fitted through the insulation and into the lower outlet, creating a watertight connection.

Outlet Ø*	To suit pipe Ø**
75mm	82 - 95mm
110mm	120-128mm
125mm	135-143mm
160mm	170-178mm

* Narrowest part of the bottom unit

** In refurbishment scenario

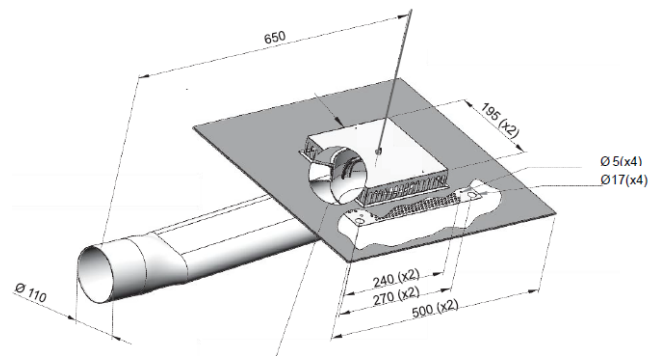


110mm SUMP OUTLET

Axter Sump Outlets are specifically designed for through walls applications or parapets where a high flow rate is required and are supplied with our HYFLOW leaf guard as standard.

AXTER Sump Outlet has an outstanding flow rate of 6.1l/s.

As recommended by UK design standard BS EN 12056:3-2000 with a water depth of 35mm.



LEAF GUARDS & ACCESSORIES

Periodic inspection should be carried out to ensure that the outlets are free of debris, leaves and gravel which could impair the performance of the drainage system.

HYFLOW LEAF GUARD

The 304 grade stainless steel HYFLOW leaf guard is a new HIGH PERFORMANCE leaf guard designed to be used with AXTER rainwater outlets. Its use increases flow rate by over 50% compared to standards leaf guards. **SIZE: 245 x 245mm.**



UNIVERSAL LEAF GUARD

The stainless steel universal leaf guard is a solid and effective leaf guard which securely clamps to the inside of the outlet stem. Suits all sizes of rainwater outlets.

SIZES: Two sizes available: 210 x 210mm and 325 x 325mm.



PARAPET LEAF GUARD

The parapet leaf guard is a solid and effective leaf guard which is securely attached to the inside of the outlet and is fully adjustable to fit all three parapet outlet sizes.

SIZE: 140 x 225mm and 140 x 325mm (to be used with the wide parapet leafguard)



CYLINDRICAL LEAF GUARD

The stainless steel cylindrical leaf guard is mainly used for ballasted roofs.

SIZES: Ten standard sizes available: 50 to 160mm.



LEAF GUARDS & ACCESSORIES, cont'd

INVERTED/BALLAST GUARD

The high grade impact resistant stainless steel guard prevents aggregates and debris from blocking roof outlets on inverted flat roof systems.

The lid is removable and the guard can be cut down to match insulation thickness (up to 260mm). Available for 62, 75, 95, 110mm outlets (other diameter and length available to be made to order.)



BALCONY LEAF GUARD

The balcony leaf guard is used for balconies and other areas exposed to light foot traffic.

Suits all sizes of Rainwater Outlets up to 110mm.



WIRE BALL LEAF GUARD

The plastic coated wire ball is an effective, yet economical leaf guard, which is able to prevent small debris entering the roof outlet.

SIZES: Ten standard sizes available: 50 to 160mm.



OVERFLOW INSERT

Used in conjunction with rainwater outlets to provide an overflow roof drainage system by increasing the drainage height to 25 or 35mm above roof level.

Manufactured from 316 grade stainless steel.

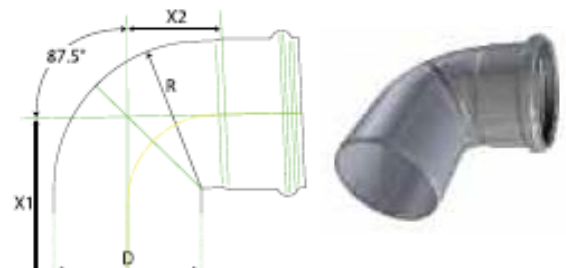
Available from stock for 110mm diameter outlets (75mm option available to order).



90° PIPE ANGLE

The Stainless steel 90° angle is used for outlet connection into the drainage system or from a parapet outlet into a hopper. A 90° pipe angle for the wide parapet outlet is also available for manufacture to order (allow 2 weeks).

D, diameter (mm)	X1 (mm)	X2 (mm)	R (mm)
50	86	40	50
75	107	53	75
110	134	73	110
160	181	105	171



LEAF GUARDS & ACCESSORIES, cont'd

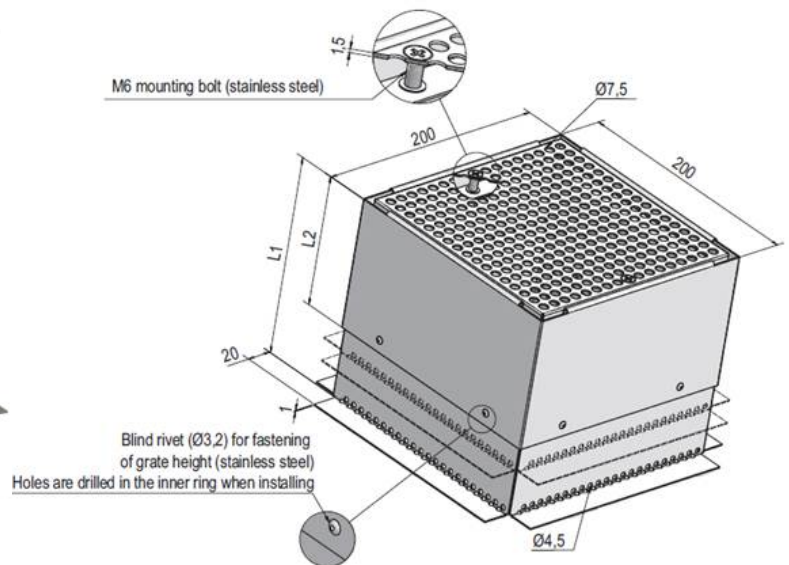
TERRACE LEAF GUARD

Axter Terrace Leaf Guard's walls are manufactured from 1mm stainless steel Aisi 304. Inspection and cleaning of the outlet is possible via the removable perforated grill manufactured from 1.5mm stainless steel Aisi 304 allowing light foot traffic when secured in place (as shown below).

The Terrace Leaf Guards come in 3 different adjustable heights (L1) with a minimum height of 60mm (L2).

- TLG/6090: 60mm to 90mm
- TLG/90120: 90mm to 120mm
- TLG/120150: 120mm to 150mm

Axter Terrace Leaf Guards are made to order (allow 2 weeks)



A minimum of 2 outlets is required (regardless of the roof size) with water depth of 35mm.

As recommended by UK design standard BS EN 12056:3-2000.

Periodic inspection should be carried out to ensure that the outlets are free of debris, leaves and gravel which could impair the performance of the drainage system.

The manufacturer reserves the right without prior notice to modify the composition of these products. Characteristics provided in this publication derive from data obtained under controlled test conditions. Axter Ltd makes no warranties, express or implied, as to the properties and performance under any variations from such conditions in actual construction.