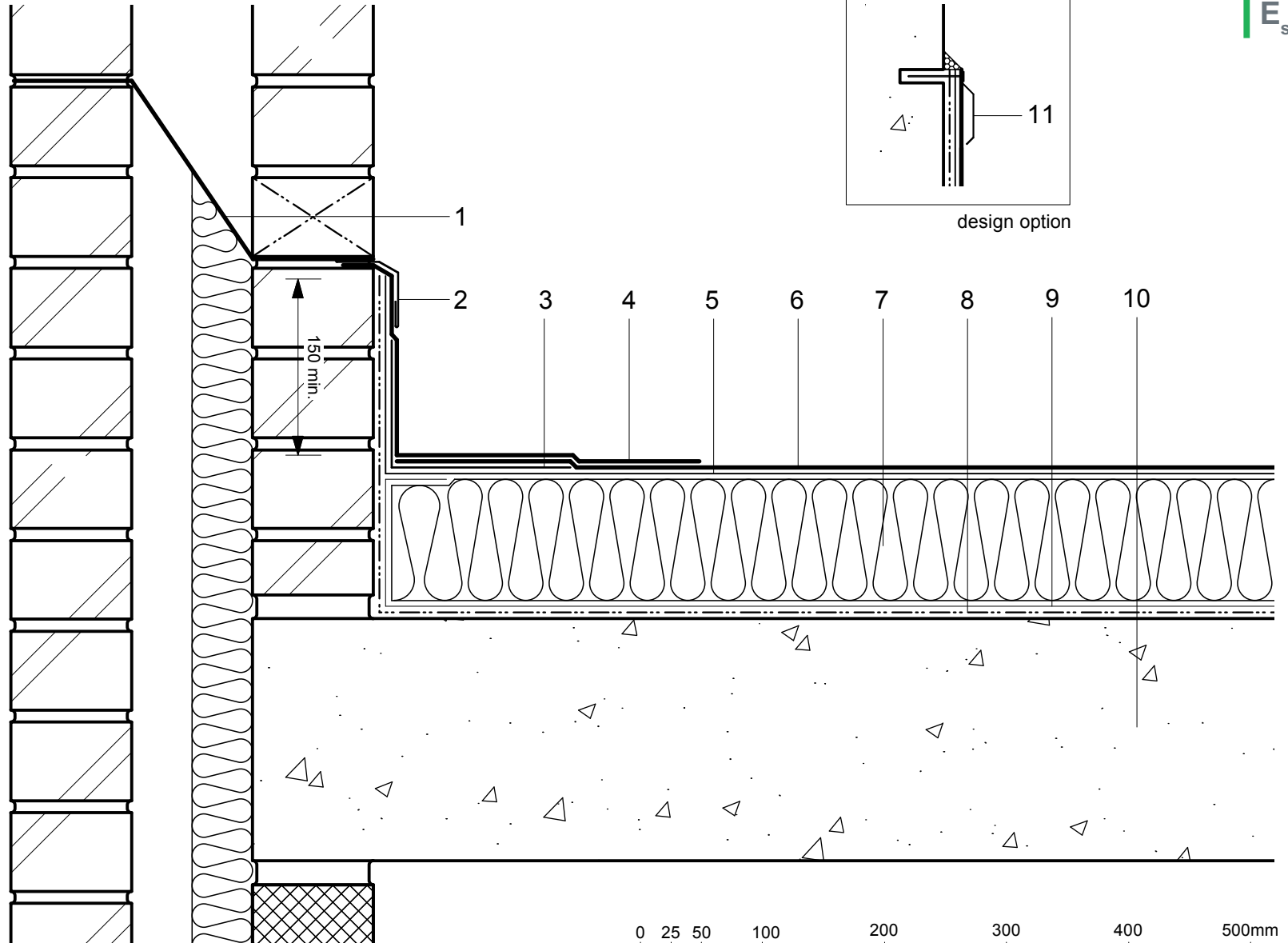


- 1 DPC/cavity tray to drain internally or externally as specified
- 2 Soft metal flashing by other
- 3 35py Angle Strip
- 4 Excel HRS Detail Membrane
- 5 Hyranger SPOT under-layer
- 6 Excel HRS capping sheet
- 7 Hytherm ADH tapered/flat board Insulation (thickness to achieve design U-value and/or design fall)
- 8 Vernis Antac ST primer
- 9 VAP AL Vapour Control Layer
- 10 Concrete substrate (by specialist subcontractor)
- 11 Axter termination bar (design option) (to suit building construction)



Do Not Scale. All dimensions to be checked on site by the Axtershield Installer

Axter provides detail drawings as part of our technical design service. Such drawings should only be used as a guide during the design process and should not be utilised during construction. Axter accepts no liability for misuse of this service.

| | |
|----------------|-------------------------|
| PROJECT | AXTER - STANDARD DETAIL |
| DRAWING NUMBER | WR.C.EX.010 |

| | | |
|---------|---|------|
| DRAWING | AXTER WARM ROOF - EXCEL/SPOT SYSTEM SKIRTING UPSTAND TO BRICK PARAPET WITH SOFT METAL FLASHING - CONCRETE SUBSTRATE | |
| SCALE | 1:5 @ A4 | DATE |
| | | 2014 |

AXTER LTD
West Road, Ransomes
Europark, Ipswich,
Suffolk, IP3 9SX.
Tel: (01473)724056
Fax: (01473)723263
info@axterltd.co.uk

