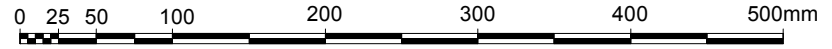
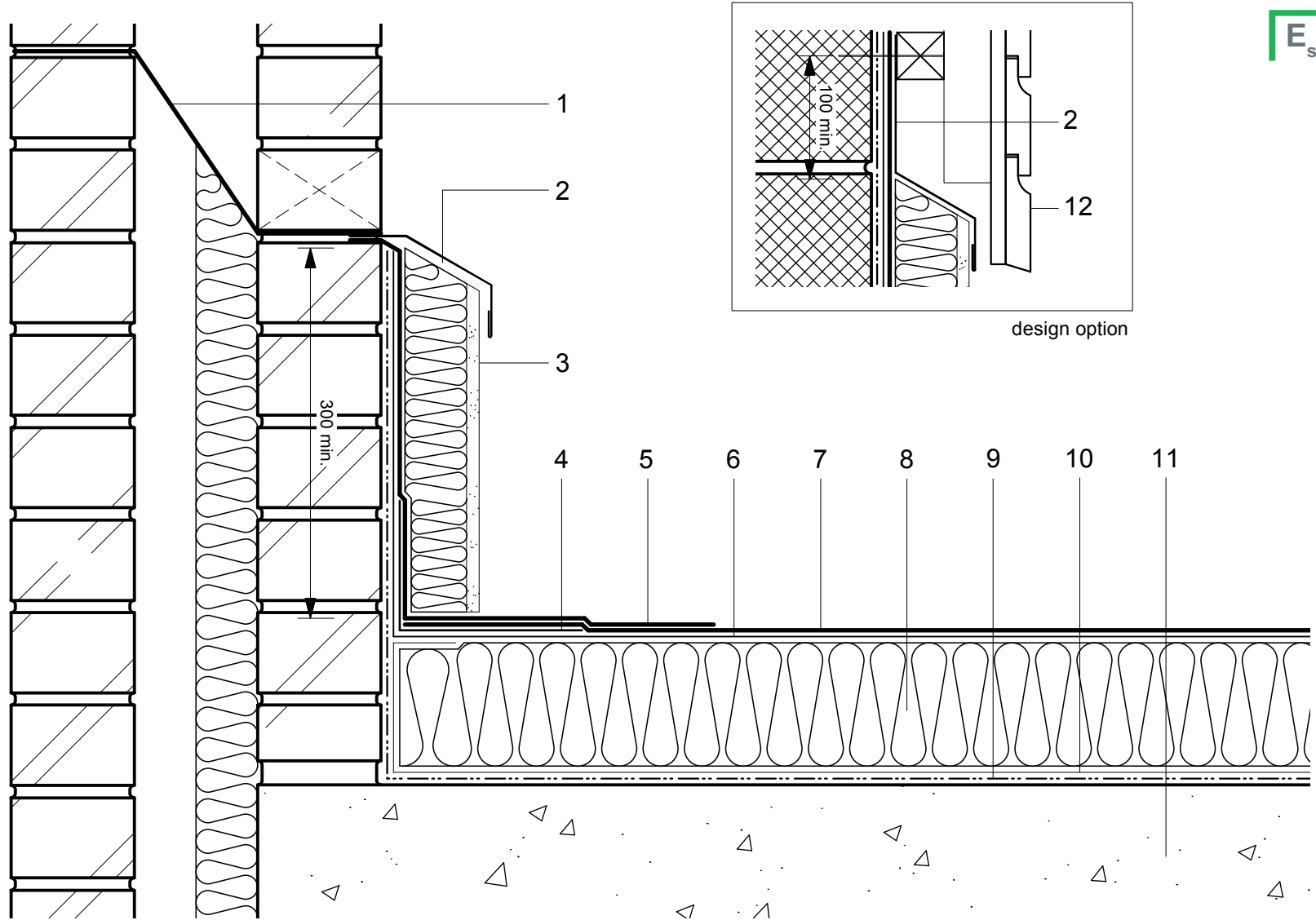


- 1 DPC/cavity tray to drain internally or externally as specified
- 2 Soft metal flashing by other
- 3 Pre-rendered Insulation
- 4 35py Angle Strip
- 5 Excel HRS Detail Membrane
- 6 Hyranger SPOT under-layer
- 7 Excel HRS capping sheet
- 8 Hytherm ADH tapered/flat board
- 9 Insulation (thickness to achieve design U-value and/or design fall)
- 10 Vernis Antac ST primer
- 11 VAP AL Vapour Control Layer
- 12 Concrete substrate (by specialist subcontractor)
- 13 Rain screen cladding (design option) (by specialist subcontractor)



Do Not Scale. All dimensions to be checked on site by the Axtersfield Installer

Axter provides detail drawings as part of our technical design service. Such drawings should only be used as a guide during the design process and should not be utilised during construction. Axter accepts no liability for misuse of this service.

PROJECT	AXTER - STANDARD DETAIL
DRAWING NUMBER	WR.C.EX.030

DRAWING	AXTER WARM ROOF - EXCEL/SPOT SYSTEM BRICK UPSTAND/INSULATED RENDER SYSTEM DETAIL - CONCRETE SUBSTRATE	
SCALE	1:5 @ A4	DATE
		2014

AXTER LTD
West Road, Ransomes
Europark, Ipswich,
Suffolk, IP3 9SX.
Tel: (01473)724056
Fax: (01473)723263
info@axterltd.co.uk

