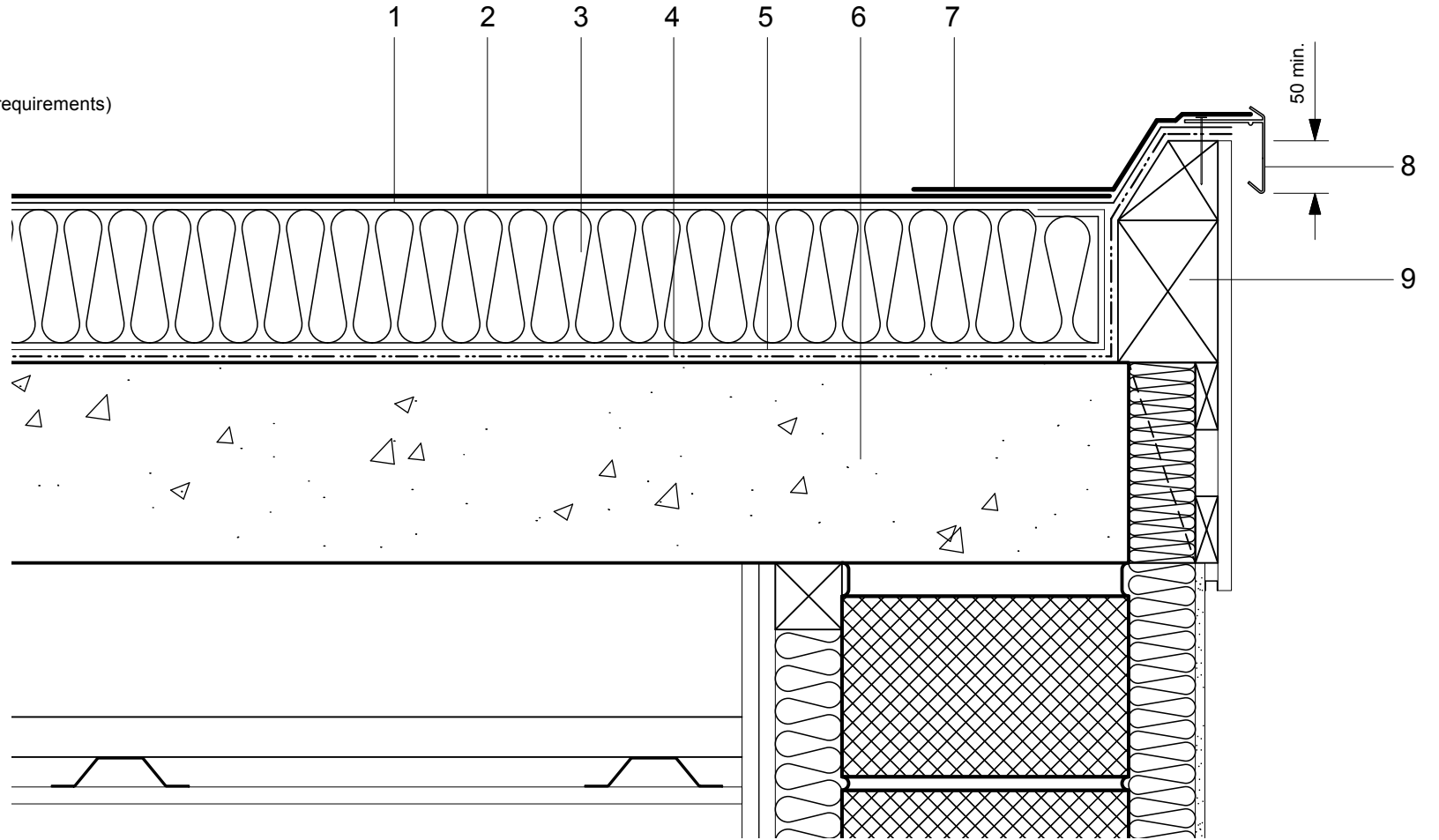


- 1 Hyranger SPOT under-layer
- 2 Excel HRS capping sheet
- 3 Hytherm ADH tapered/flat board  
Insulation (thickness to achieve design  
U-value and/or design fall)
- 4 Vernis Antac ST primer
- 5 VAP AL Vapour Control Layer
- 6 Concrete substrate  
(by specialist subcontractor)
- 7 Excel HRS detail membrane
- 8 Axtrim Perimeter Trim (to suit design requirements)
- 9 Timber hard edge/water check detail  
(by specialist subcontractor)



Do Not Scale. All dimensions to be checked on site by the Axtershield Installer

Axter provides detail drawings as part of our technical design service. Such drawings should only be used as a guide during the design process and should not be utilised during construction. Axter accepts no liability for misuse of this service.

|                |                         |
|----------------|-------------------------|
| PROJECT        | AXTER - STANDARD DETAIL |
| DRAWING NUMBER | WR.C.EX.060             |

|         |  |      |
|---------|--|------|
| DRAWING | AXTER WARM ROOF - EXCEL/SPOT SYSTEM<br>TYPICAL VERGE CHECK EDGE DETAIL -<br>CONCRETE SUBSTRATE |      |
| SCALE   | 1:5 @ A4   | DATE |
|         |  | 2014 |

AXTER LTD  
West Road, Ransomes  
Europark, Ipswich,  
Suffolk, IP3 9SX.  
Tel: (01473)724056  
Fax: (01473)723263  
info@axterltd.co.uk

