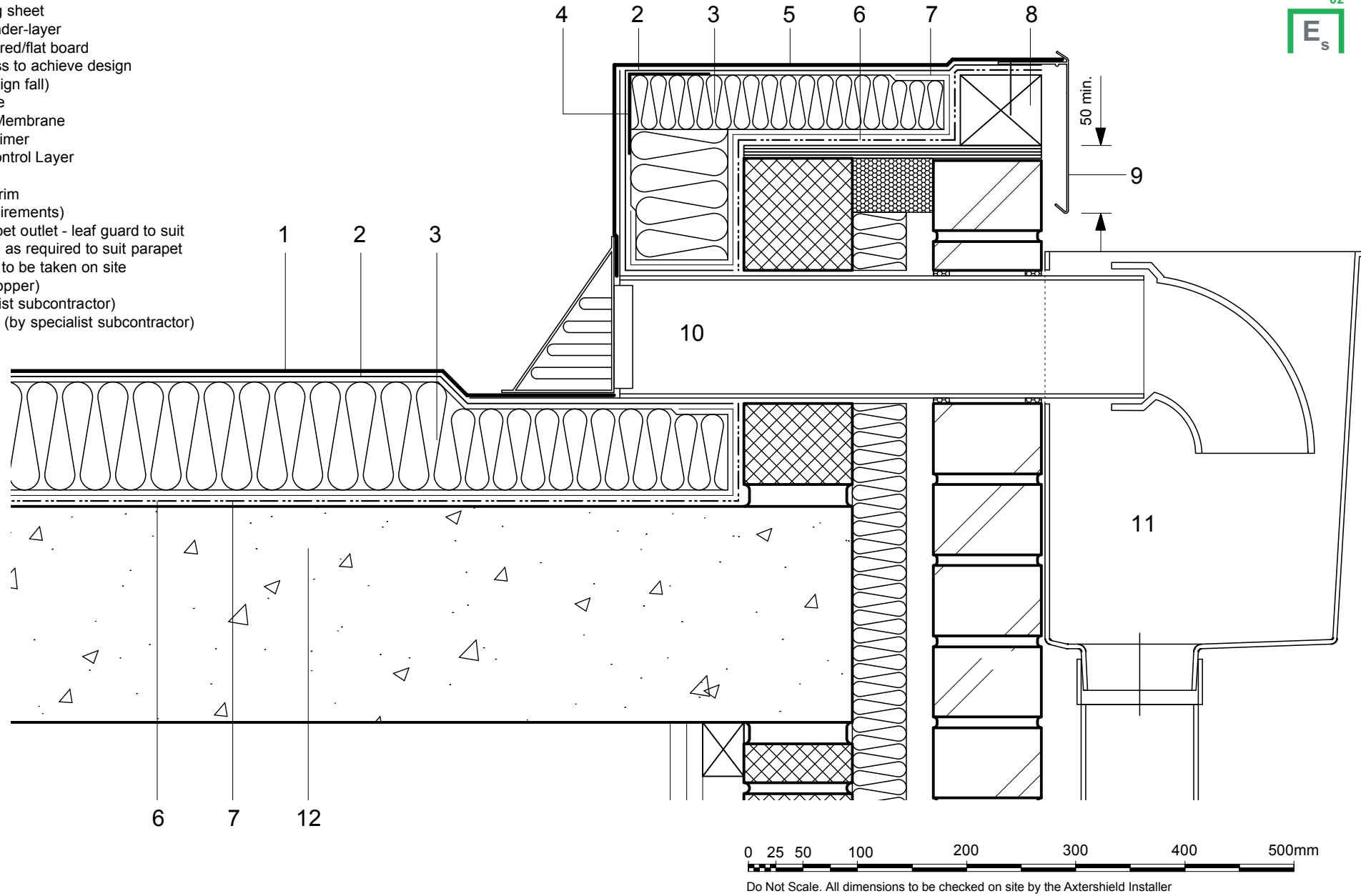


- 1 Excel HRS capping sheet
- 2 Hyranger SPOT under-layer
- 3 Hytherm ADH tapered/flat board
Insulation (thickness to achieve design
U-value and/or design fall)
- 4 Metal support angle
- 5 Excel HRS Detail Membrane
- 6 Vernis Antac ST primer
- 7 VAP AL Vapour Control Layer
- 8 Timber hard edge
- 9 Axtrim Perimeter Trim
(to suit design requirements)
- 10 Axter SF 110 parapet outlet - leaf guard to suit
with extension pipe as required to suit parapet
width - dimensions to be taken on site
(90° downturn to hopper)
- 11 Hopper (by specialist subcontractor)
- 12 Concrete substrate (by specialist subcontractor)



Axter provides detail drawings as part of our technical design service. Such drawings should only be used as a guide during the design process and should not be utilised during construction. Axter accepts no liability for misuse of this service.

PROJECT	AXTER - STANDARD DETAIL
DRAWING NUMBER	WR.C.EX.080

DRAWING	AXTER WARM ROOF - EXCEL/SPOT SYSTEM TYPICAL PARAPET RAIN WATER OUTLET DETAIL - CONCRETE SUBSTRATE	
SCALE	1:5 @ A4	DATE
		2014

AXTER LTD
West Road, Ransomes
Europark, Ipswich,
Suffolk, IP3 9SX.
Tel: (01473) 724056
Fax: (01473) 723263
info@axterltd.co.uk

