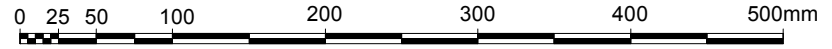
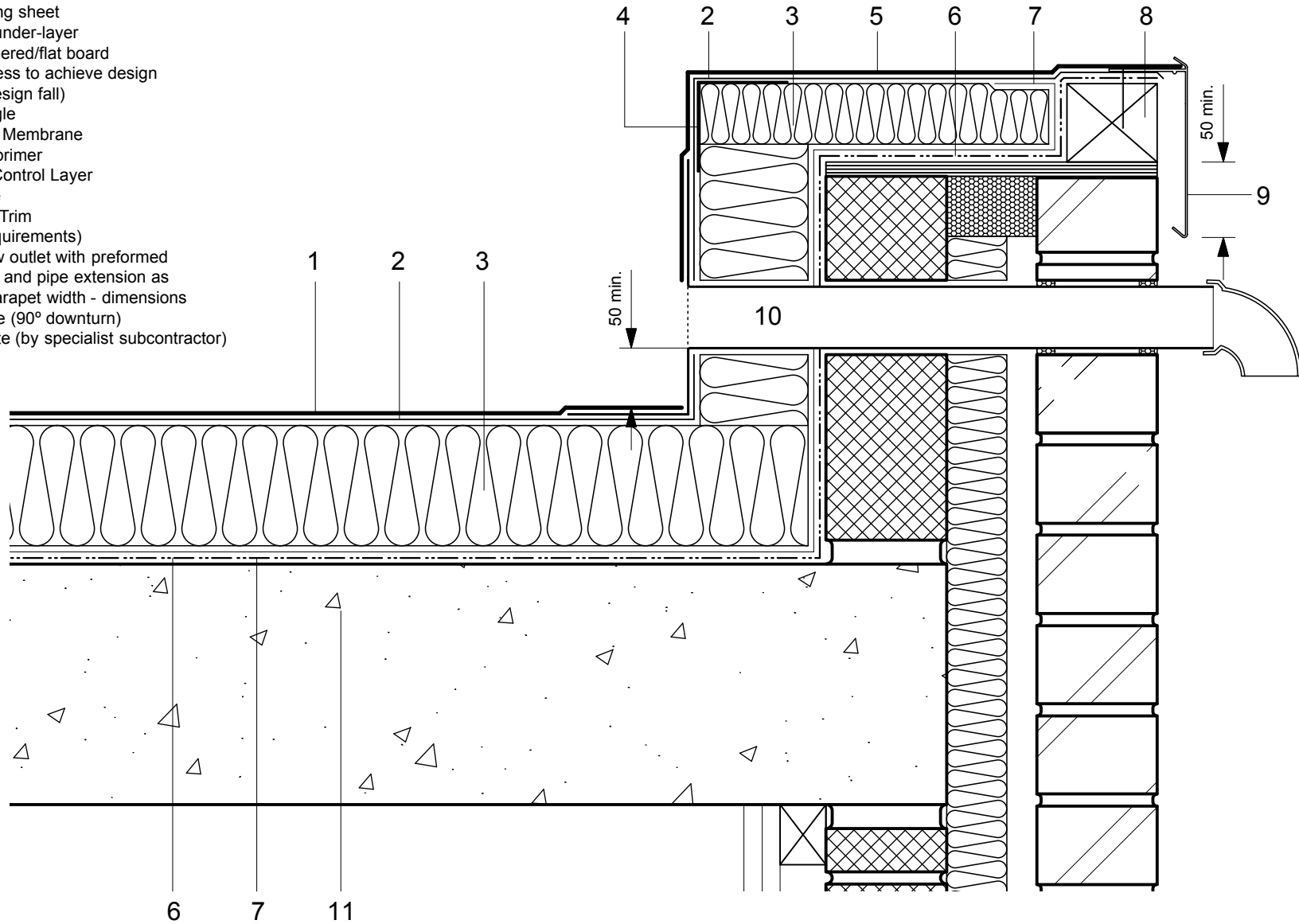


- 1 Excel HRS capping sheet
- 2 Hyranger SPOT under-layer
- 3 Hytherm ADH tapered/flat board
Insulation (thickness to achieve design
U-value and/or design fall)
- 4 Metal support angle
- 5 Excel HRS Detail Membrane
- 6 Vernis Antac ST primer
- 7 VAP AL Vapour Control Layer
- 8 Timber hard edge
- 9 Axtrim Perimeter Trim
(to suit design requirements)
- 10 Axter RO overflow outlet with preformed
membrane flange and pipe extension as
required to suit parapet width - dimensions
to be taken on site (90° downturn)
- 11 Concrete substrate (by specialist subcontractor)



Do Not Scale. All dimensions to be checked on site by the Axtershield Installer

Axter provides detail drawings as part of our technical design service. Such drawings should only be used as a guide during the design process and should not be utilised during construction. Axter accepts no liability for misuse of this service.

PROJECT	AXTER - STANDARD DETAIL	
DRAWING NUMBER	WR.C.EX.081	

DRAWING	AXTER WARM ROOF - EXCEL/SPOT SYSTEM TYPICAL PARAPET RAIN WATER OVERFLOW DETAIL - CONCRETE SUBSTRATE	
SCALE	1:5 @ A4	DATE
		2014

AXTER LTD
West Road, Ransomes
Europark, Ipswich,
Suffolk, IP3 9SX.
Tel: (01473) 724056
Fax: (01473) 723263
info@axterltd.co.uk

