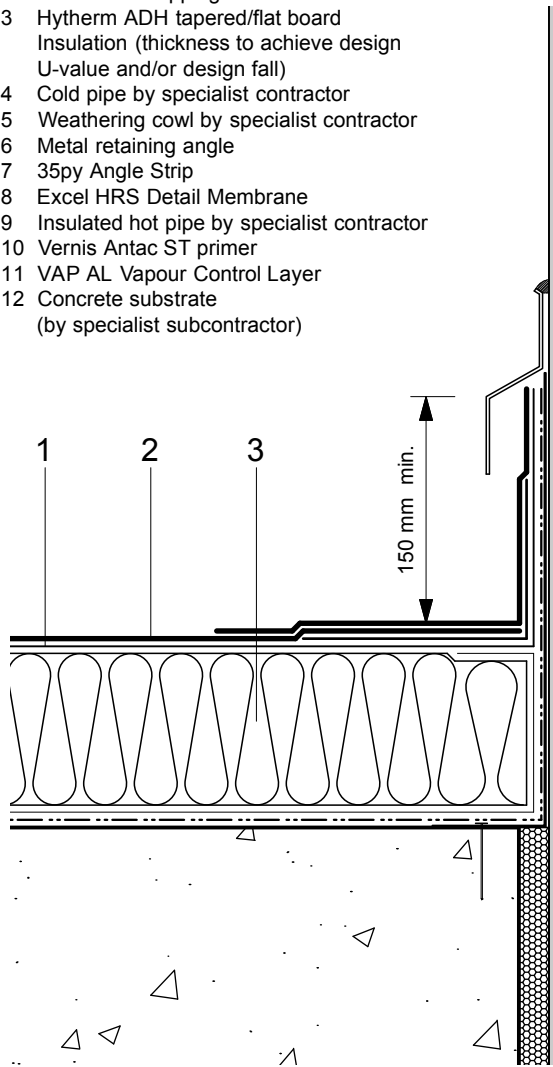
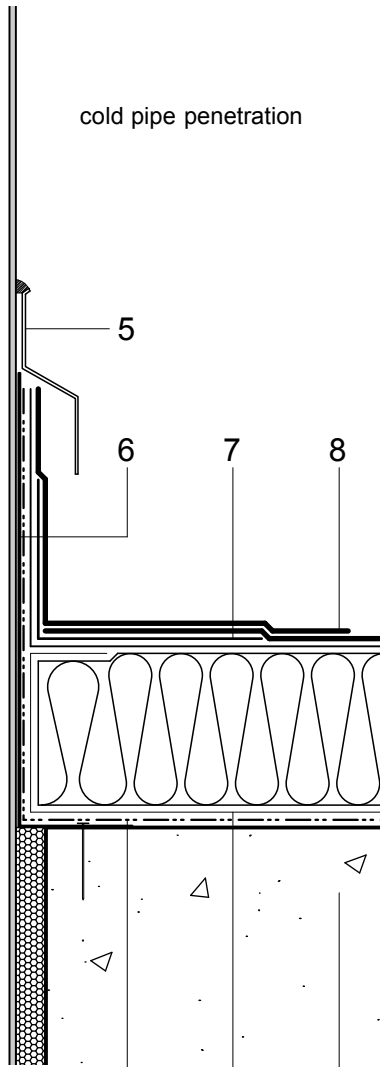


- 1 Hyranger SPOT under-layer
- 2 Excel HRS capping sheet
- 3 Hytherm ADH tapered/flat board Insulation (thickness to achieve design U-value and/or design fall)
- 4 Cold pipe by specialist contractor
- 5 Weathering cowl by specialist contractor
- 6 Metal retaining angle
- 7 35py Angle Strip
- 8 Excel HRS Detail Membrane
- 9 Insulated hot pipe by specialist contractor
- 10 Vernis Antac ST primer
- 11 VAP AL Vapour Control Layer
- 12 Concrete substrate (by specialist subcontractor)



4

cold pipe penetration



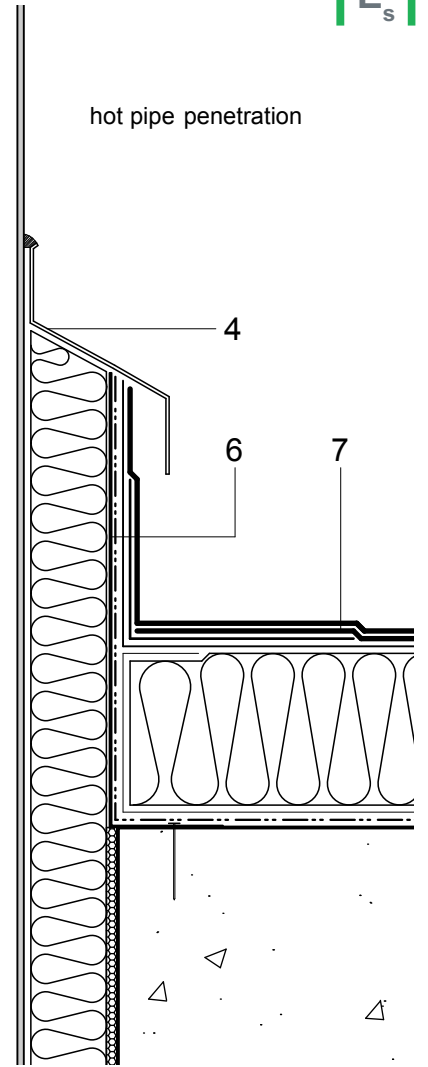
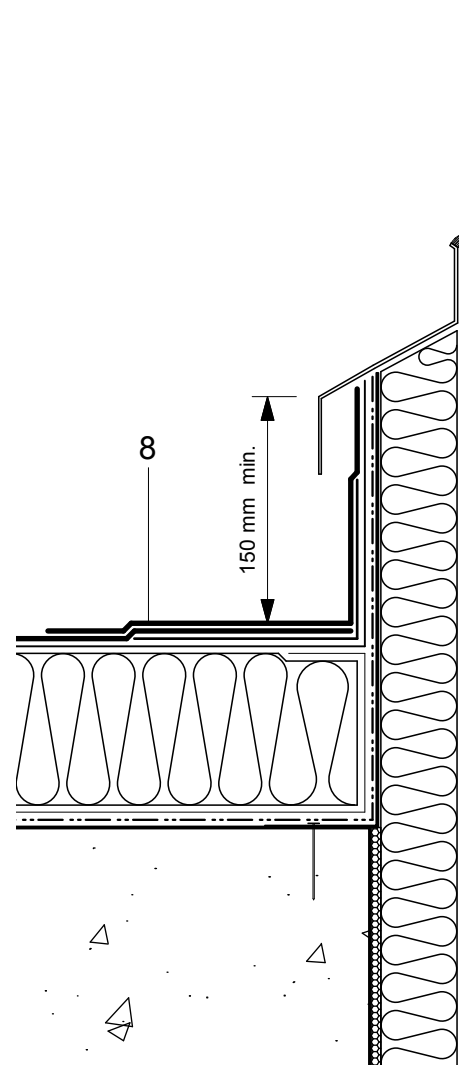
10

11

12

9

hot pipe penetration



4

6

7



Do Not Scale. All dimensions to be checked on site by the Axtershield Installer

Axter provides detail drawings as part of our technical design service. Such drawings should only be used as a guide during the design process and should not be utilised during construction. Axter accepts no liability for misuse of this service.

PROJECT	AXTER - STANDARD DETAIL	
DRAWING NUMBER	WR.C.EX.100	

DRAWING	AXTER WARM ROOF - EXCEL/SPOT SYSTEM TYPICAL HOT & COLD PIPE PENETRATION DETAIL - CONCRETE SUBSTRATE	
SCALE	1:5 @ A4	DATE
		2014

AXTER LTD
West Road, Ransomes
Europark, Ipswich,
Suffolk, IP3 9SX.
Tel: (01473) 724056
Fax: (01473) 723263
info@axterltd.co.uk

