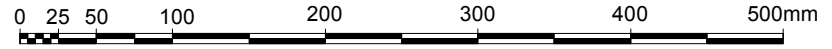
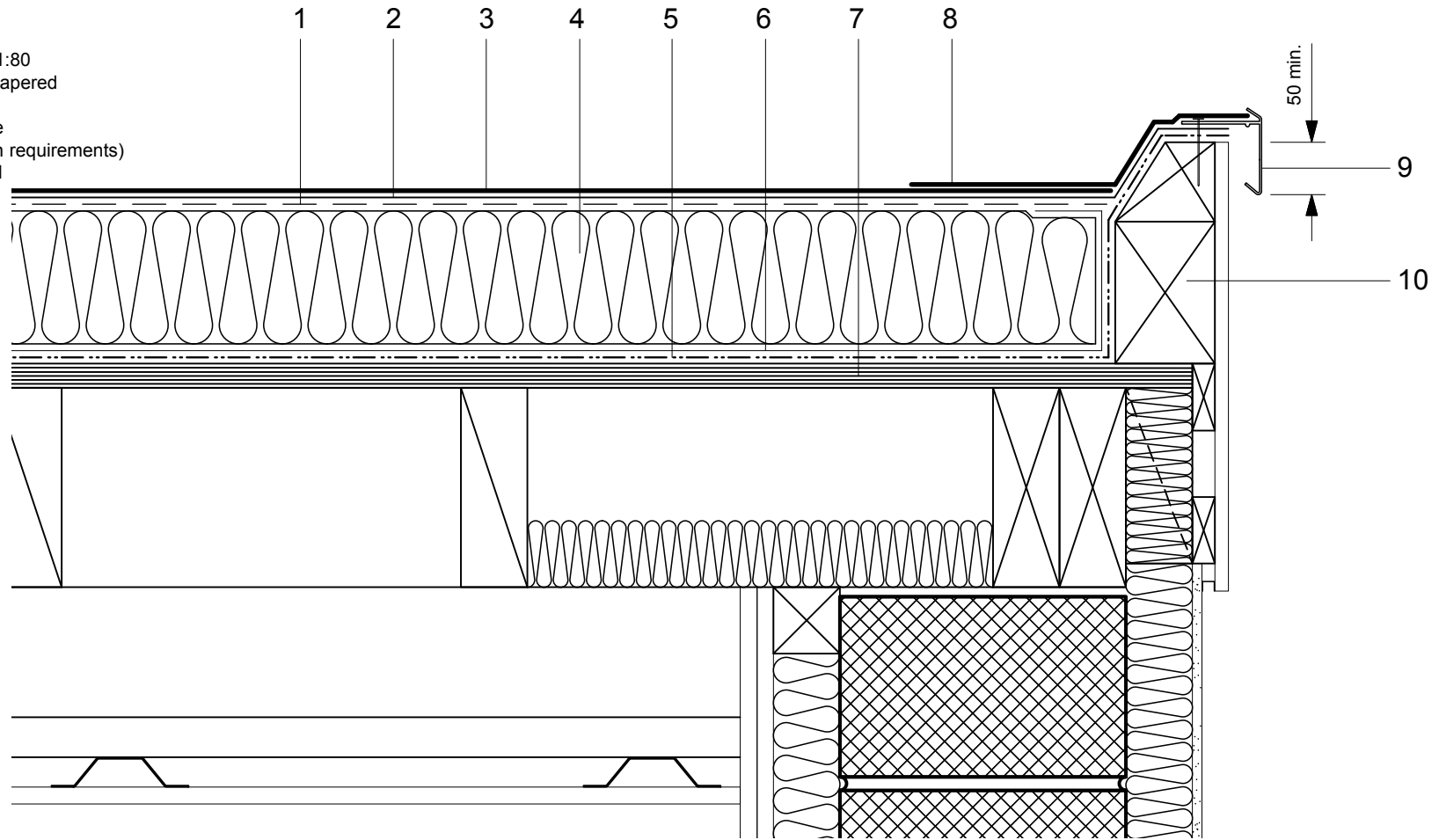


- 1 Perforated Layer
- 2 FORCE LINE 2/3 VV under-layer
- 3 FORCE LINE 4/4.5 capping sheet
- 4 Hytherm ADH tapered/flat board
- 5 Insulation (thickness to achieve design U-value and/or design fall)
- 6 Vernis Antac ST primer
- 7 Axter Vapour Control Layer
- 8 Plywood substrate laid to minimum 1:80 falls (falls unnecessary when using tapered insulation) by specialist contractor
- 9 FORCE LINE 4/4.5 detail membrane
- 10 Axtrim Perimeter Trim (to suit design requirements)
- 11 Timber hard edge/water check detail (by specialist subcontractor)



Do Not Scale. All dimensions to be checked on site by the Axtershield Installer

<p>Axter provides detail drawings as part of our technical design service. Such drawings should only be used as a guide during the design process and should not be utilised during construction. Axter accepts no liability for misuse of this service.</p>	<p>PROJECT AXTER - STANDARD DETAIL</p>	<p>DRAWING AXTER WARM ROOF - FORCE LINE SYSTEM TYPICAL VERGE CHECK EDGE DETAIL - PLYWOOD SUBSTRATE</p>		<p>AXTER LTD West Road, Ransomes Europark, Ipswich, Suffolk, IP3 9SX. Tel: (01473) 724056 Fax: (01473) 723263 info@axterltd.co.uk</p>	
	<p>DRAWING NUMBER WR.P.FL.60</p>	<p>SCALE 1:5 @ A4</p>	<p>DATE 2014</p>		