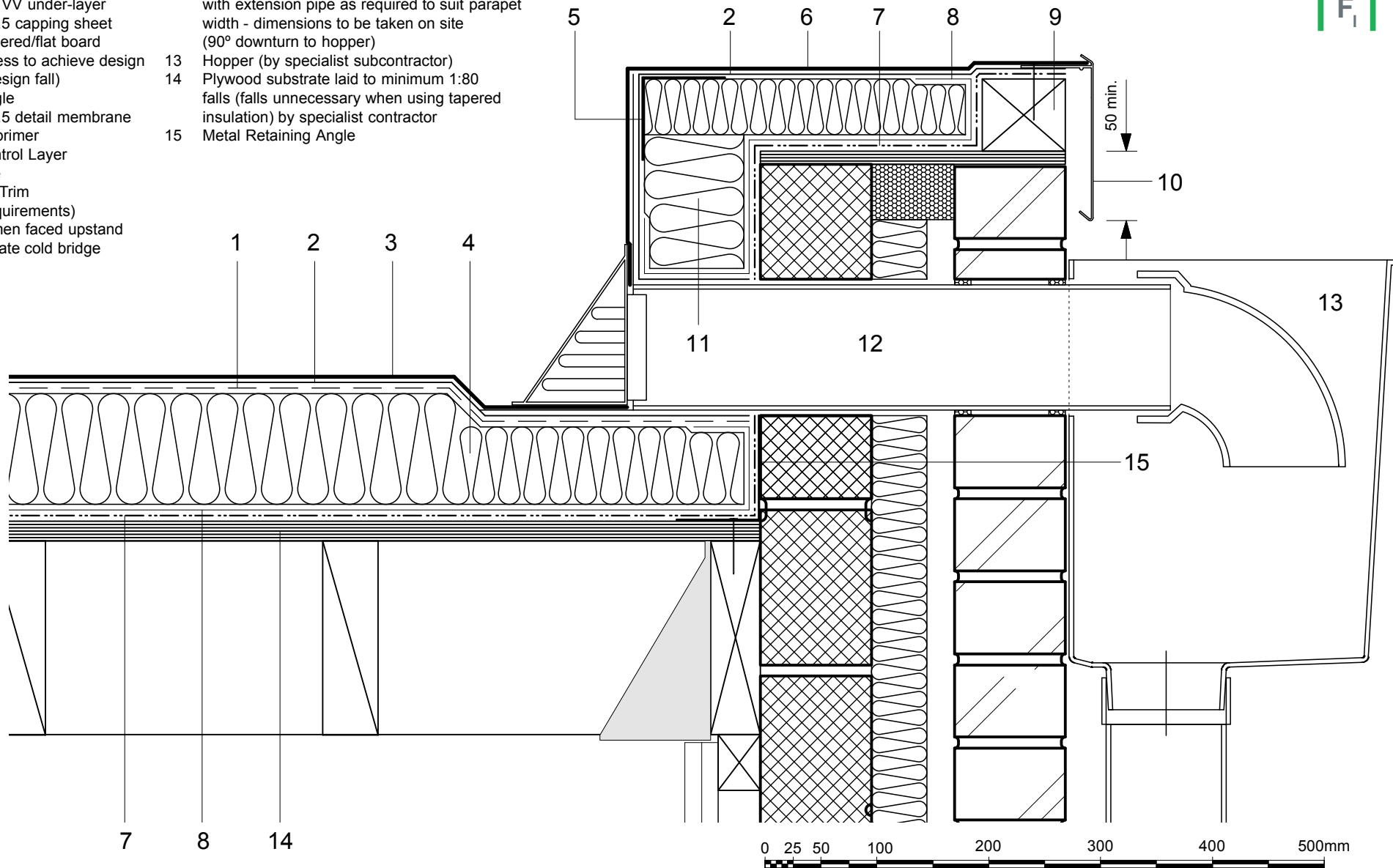


- 1 Perforated Layer
- 2 FORCE LINE 2/3 VV under-layer
- 3 FORCE LINE 4/4.5 capping sheet
- 4 Hytherm ADH tapered/flat board
- 5 Insulation (thickness to achieve design U-value and/or design fall)
- 6 Metal support angle
- 7 FORCE LINE 4/4.5 detail membrane
- 8 Vernis Antac ST primer
- 9 Axter Vapour Control Layer
- 10 Timber hard edge
- 11 Axtrim Perimeter Trim (to suit design requirements)
- 12 Hytherm BF bitumen faced upstand insulation to mitigate cold bridge
- 13 Axter SF 110 parapet outlet - leaf guard to suit with extension pipe as required to suit parapet width - dimensions to be taken on site (90° downturn to hopper)
- 14 Hopper (by specialist subcontractor)
- 15 Plywood substrate laid to minimum 1:80 falls (falls unnecessary when using tapered insulation) by specialist contractor
- 16 Metal Retaining Angle



Do Not Scale. All dimensions to be checked on site by the Axtershield Installer

Axter provides detail drawings as part of our technical design service. Such drawings should only be used as a guide during the design process and should not be utilised during construction. Axter accepts no liability for misuse of this service.

PROJECT	AXTER - STANDARD DETAIL
DRAWING NUMBER	WR.P.FL.80

DRAWING	AXTER WARM ROOF - FORCE LINE SYSTEM TYPICAL PARAPET RAIN WATER OUTLET DETAIL - PLYWOOD SUBSTRATE	
SCALE	1:5 @ A4	DATE
		2014

AXTER LTD  
West Road, Ransomes  
Europark, Ipswich,  
Suffolk, IP3 9SX.  
Tel:(01473)724056  
Fax:(01473)723263  
info@axterltd.co.uk

