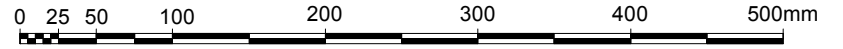
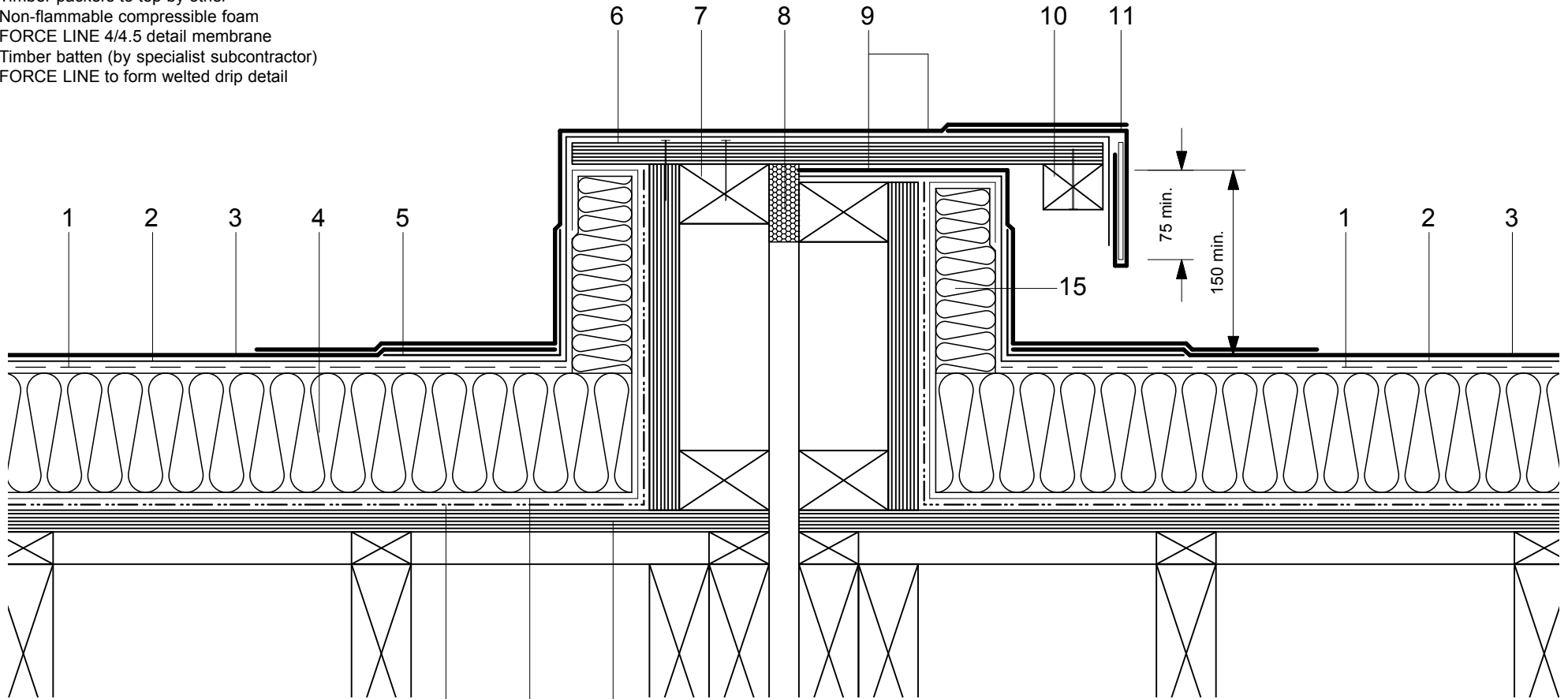


- 1 Perforated Layer
- 2 FORCE LINE 2/3 VV under-layer
- 3 FORCE LINE 4/4.5 capping sheet
- 4 Hytherm ADH tapered/flat board
- 5 Insulation (thickness to achieve design U-value and/or design fall)
- 6 35py Angle Strip
- 7 18mm WBP plywood deck capping (fixed one side only)
- 8 Timber packers to top by other
- 9 Non-flammable compressible foam
- 10 FORCE LINE 4/4.5 detail membrane
- 11 Timber batten (by specialist subcontractor)
- 12 Vernis Antac ST primer
- 13 Axter Vapour Control Layer
- 14 Plywood substrate laid to minimum 1:80 falls (falls unnecessary when using tapered insulation)
- 15 Hytherm BF bitumen faced upstand insulation to mitigate cold bridge



Do Not Scale. All dimensions to be checked on site by the Axtershield Installer

Axter provides detail drawings as part of our technical design service. Such drawings should only be used as a guide during the design process and should not be utilised during construction. Axter accepts no liability for misuse of this service.

PROJECT	AXTER - STANDARD DETAIL
DRAWING NUMBER	WR.P.FL.140

DRAWING	AXTER WARM ROOF - FORCE LINE SYSTEM TYPICAL MOVEMENT JOINT - TWIN KERB DETAIL - PLYWOOD SUBSTRATE	
SCALE	1:5 @ A4	DATE
		2014

AXTER LTD
West Road, Ransomes
Europark, Ipswich,
Suffolk, IP3 9SX.
Tel:(01473)724056
Fax:(01473)723263
info@axterltd.co.uk

