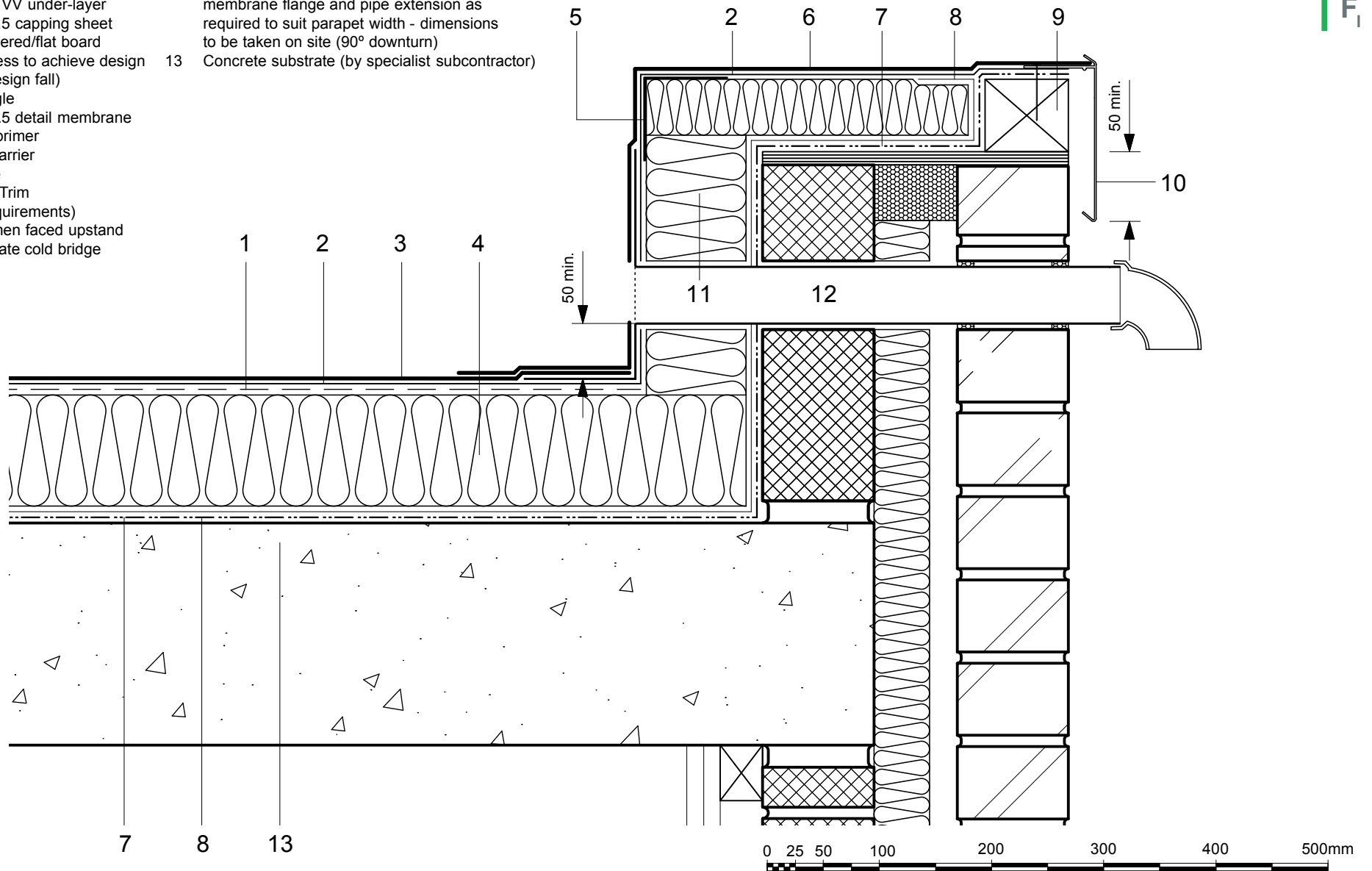


- 1 Perforated Layer
- 2 FORCE LINE 2/3 VV under-layer
- 3 FORCE LINE 4/4.5 capping sheet
- 4 Hytherm ADH tapered/flat board
- 5 Insulation (thickness to achieve design U-value and/or design fall)
- 6 Metal support angle
- 7 FORCE LINE 4/4.5 detail membrane
- 8 Vernis Antac ST primer
- 9 Vap AL Vapour Barrier
- 10 Timber hard edge
- 11 Axtrim Perimeter Trim (to suit design requirements)
- 12 Hytherm BF bitumen faced upstand insulation to mitigate cold bridge
- 13 Axter RO overflow outlet with preformed membrane flange and pipe extension as required to suit parapet width - dimensions to be taken on site (90° downturn)
- 14 Concrete substrate (by specialist subcontractor)



Do Not Scale. All dimensions to be checked on site by the Axtershield Installer

Axter provides detail drawings as part of our technical design service. Such drawings should only be used as a guide during the design process and should not be utilised during construction. Axter accepts no liability for misuse of this service.

| | |
|----------------|-------------------------|
| PROJECT | AXTER - STANDARD DETAIL |
| DRAWING NUMBER | WR.C.FL.081 |

| | | |
|---------|---|------|
| DRAWING | AXTER WARM ROOF - FORCE LINE SYSTEM TYPICAL PARAPET RAIN WATER OVERFLOW DETAIL - CONCRETE SUBSTRATE | |
| SCALE | 1:5 @ A4 | DATE |
| | | 2014 |

AXTER LTD
West Road, Ransomes
Europark, Ipswich,
Suffolk, IP3 9SX.
Tel:(01473)724056
Fax:(01473)723263
info@axterltd.co.uk

