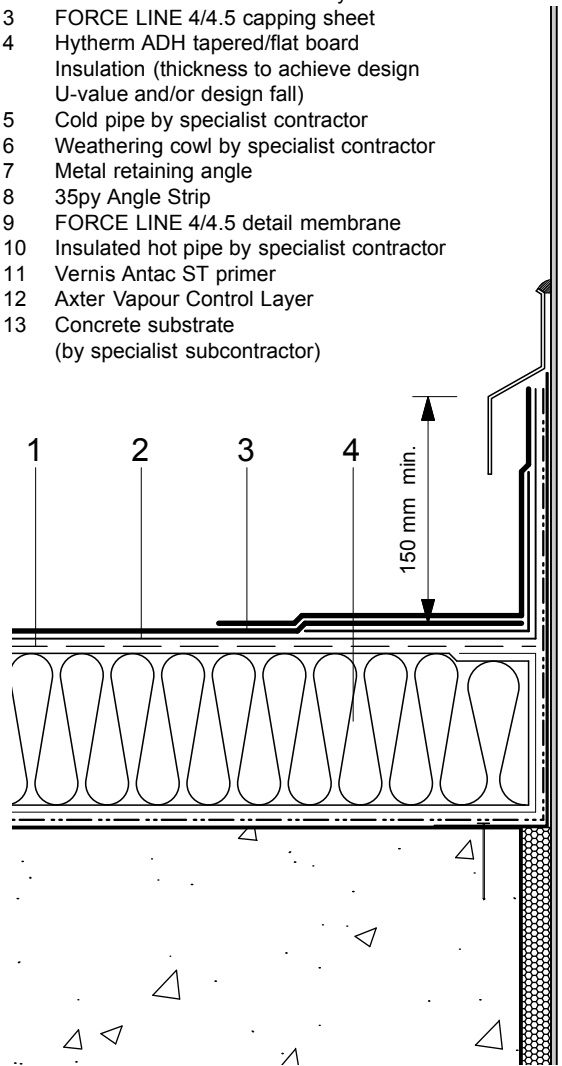
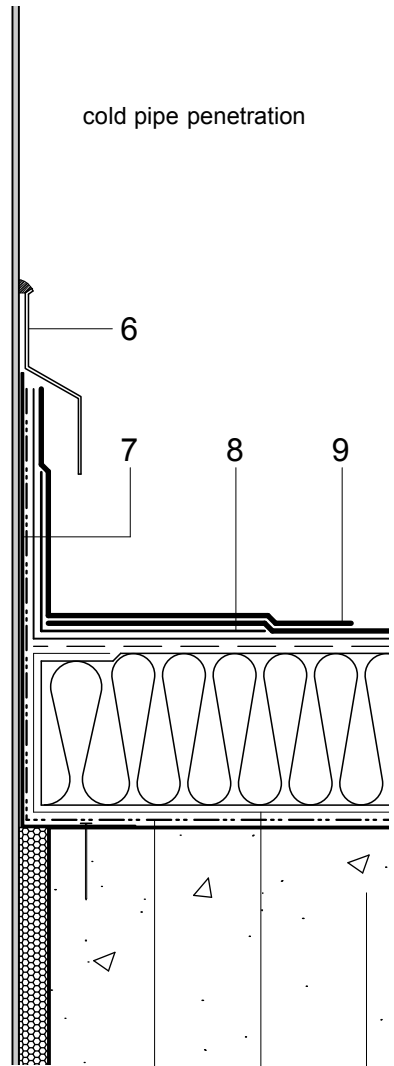


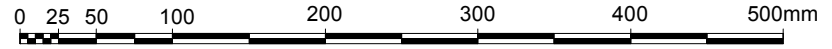
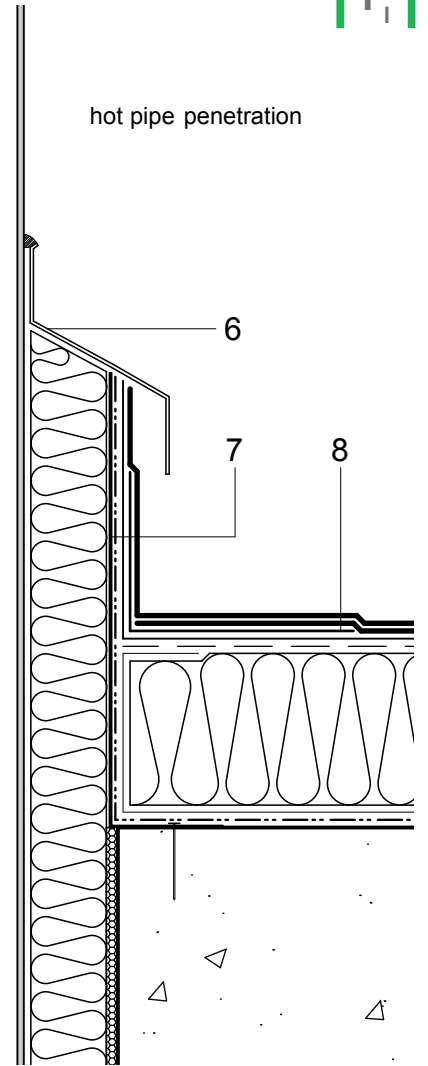
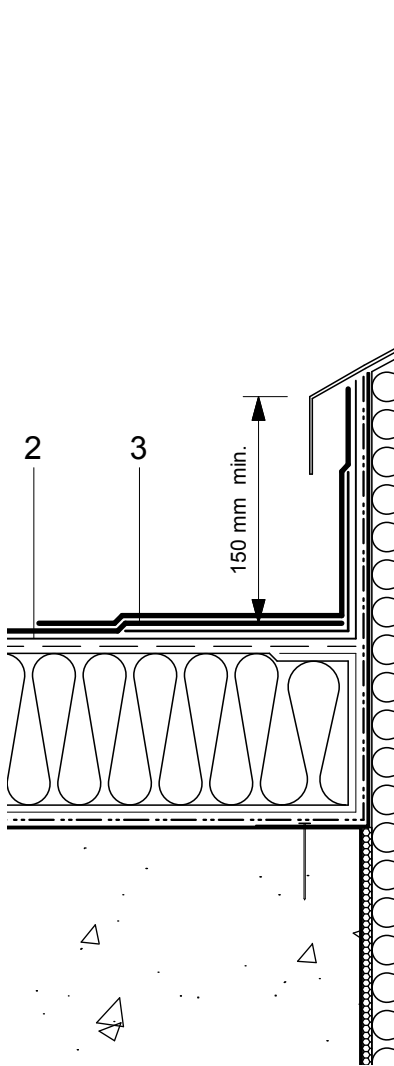
- 1 Perforated Layer
- 2 FORCE LINE 2/3 VV under-layer
- 3 FORCE LINE 4/4.5 capping sheet
- 4 Hytherm ADH tapered/flat board
- Insulation (thickness to achieve design U-value and/or design fall)
- 5 Cold pipe by specialist contractor
- 6 Weathering cowl by specialist contractor
- 7 Metal retaining angle
- 8 35py Angle Strip
- 9 FORCE LINE 4/4.5 detail membrane
- 10 Insulated hot pipe by specialist contractor
- 11 Vernis Antac ST primer
- 12 Axter Vapour Control Layer
- 13 Concrete substrate (by specialist subcontractor)



5 cold pipe penetration



10 hot pipe penetration



Do Not Scale. All dimensions to be checked on site by the Axtershield Installer

Axter provides detail drawings as part of our technical design service. Such drawings should only be used as a guide during the design process and should not be utilised during construction. Axter accepts no liability for misuse of this service.

PROJECT	AXTER - STANDARD DETAIL	
DRAWING NUMBER	WR.C.FL.100	

DRAWING	AXTER WARM ROOF - FORCE LINE SYSTEM TYPICAL HOT & COLD PIPE PENETRATION DETAIL - CONCRETE SUBSTRATE	
SCALE	1:5 @ A4	DATE
		2014

AXTER LTD  
West Road, Ransomes  
Europark, Ipswich,  
Suffolk, IP3 9SX.  
Tel: (01473) 724056  
Fax: (01473) 723263  
info@axterltd.co.uk

