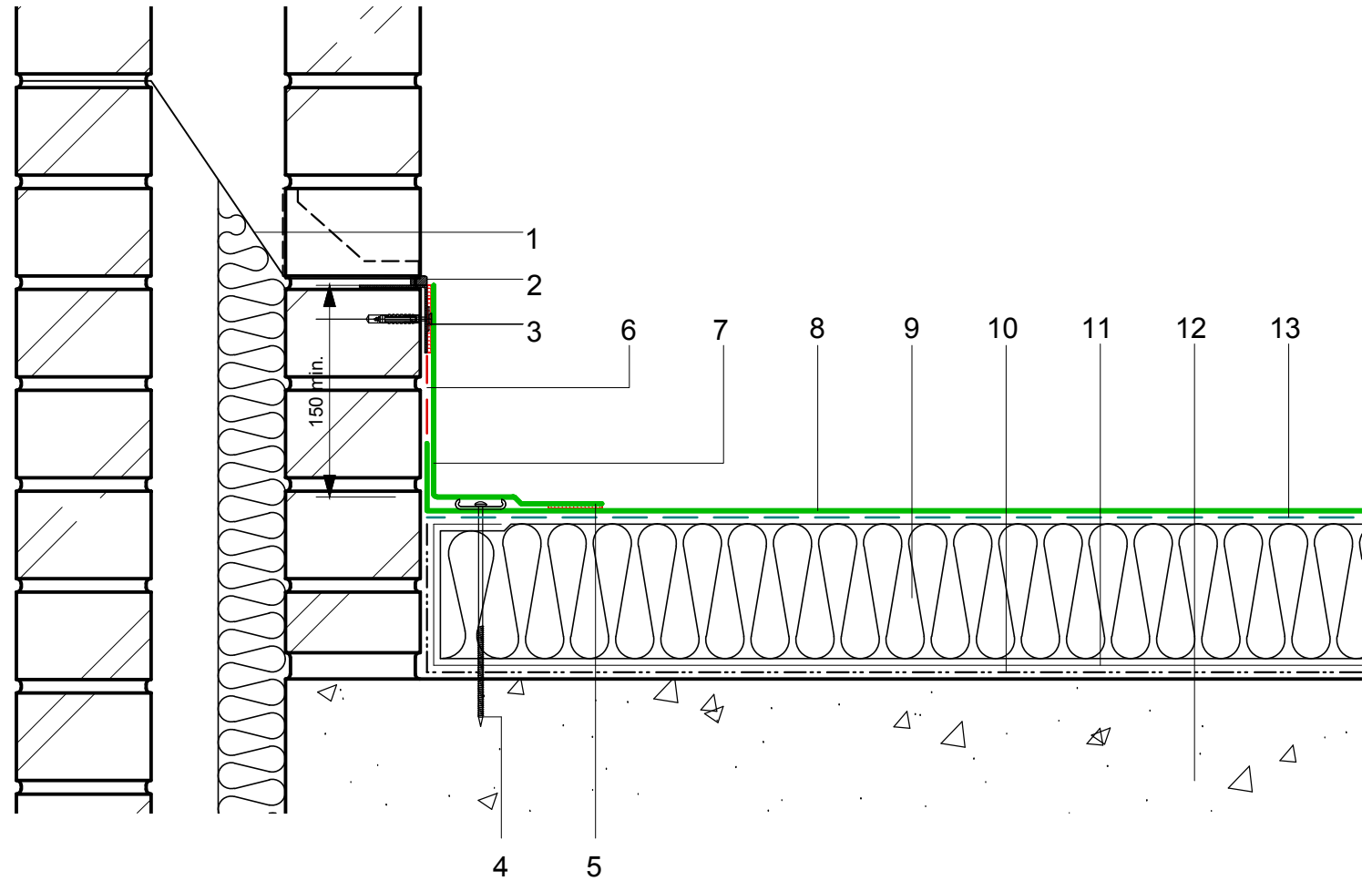



- 1 DPC/cavity tray/weep holes to drain internally or externally as specified
- 2 ECOLINE Sealant
- 3 ECOMETAL preformed PVC coated metal trim mechanical (C) fixing at 200mm ctrs
- 4 Restraint bar and mechanical (C) fixing
- 5 Heat welded seam - 40mm
- 6 FM/D contact adhesive
- 7 ECOLINE FM single ply membrane
- 8 ECOLINE ADH fleeceback single ply membrane fully bonded using ADH Adhesive
- 9 Hytherm tapered/flat board Insulation mechanically fixed with Ecoline insulation washers and fixings (thickness to achieve design U-value and/or design fall)
- 10 Vernis Antac ST primer
- 11 Axter Vapour Control Layer
- 12 Concrete substrate (by specialist subcontractor)
- 13 ADH Adhesive



Do Not Scale. All dimensions to be checked on site by the Axtershield Installer

Axter provide detail drawings as part of our technical design service. Such drawings should only be used as a guide during the design process and should not be utilised during construction. Axter accepts no liability for misuse of this service.

PROJECT	AXTER - STANDARD DETAIL		DRAWING			
			AXTER WARM ROOF - ECOLINE ADH SYSTEM SKIRTING UPSTAND TO BRICK PARAPET WITH ECOMETAL FLASHING - CONCRETE SUBSTRATE			
CLIENT	N/A		DWG.No	SCALE	DATE	REV
			WR.C.EL.adh.10	1:5 @ A4	10.16	N/A
					<small>www.axter.co.uk info@axterltd.co.uk 01473 724 056</small>	
					<small>Axter Ltd. West Road, Ransomes Europark, Ipswich, Suffolk, IP3 9SX</small>	