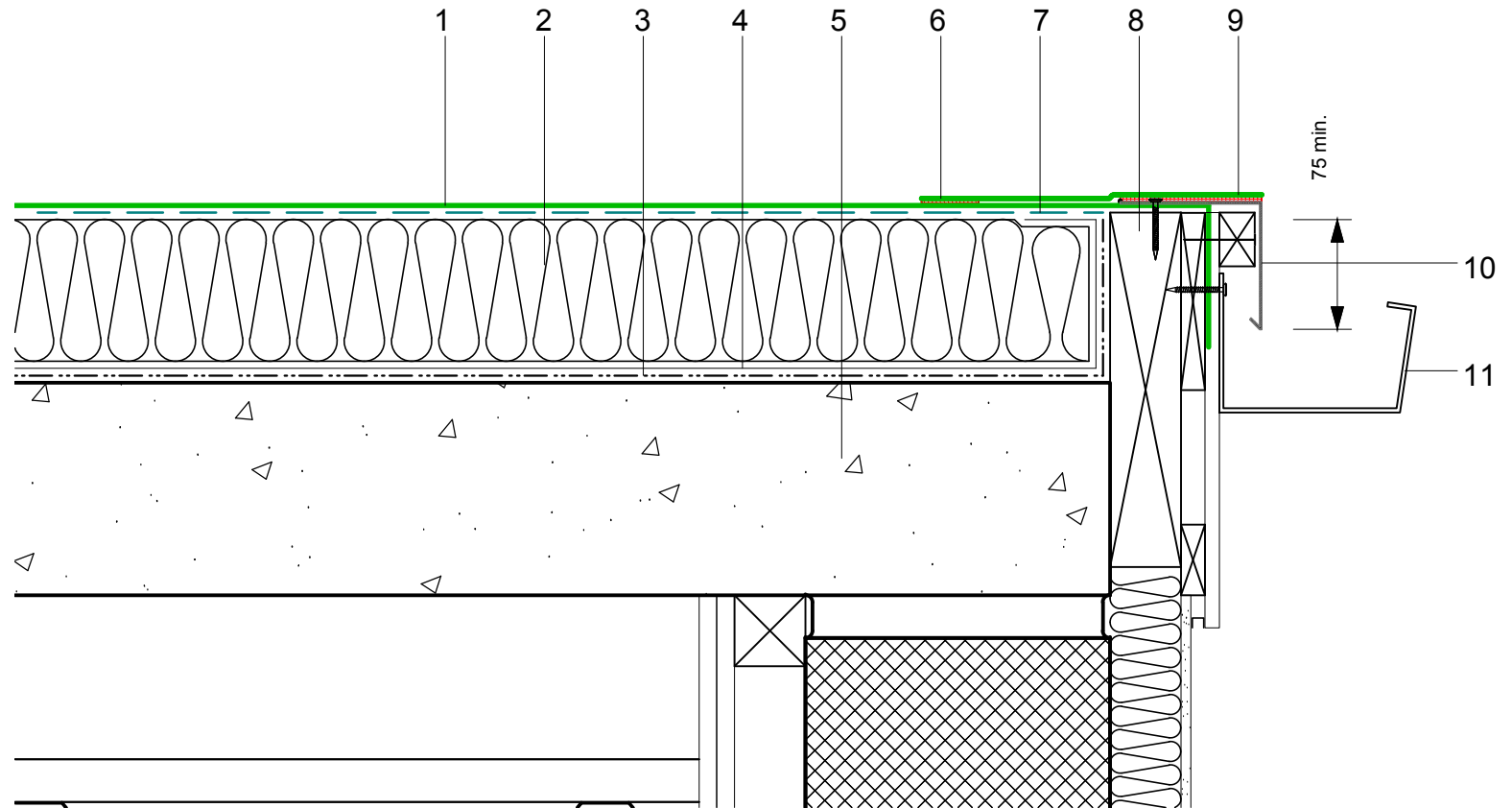


- 1 ECOLINE ADH fleeceback  
single ply membrane fully bonded using  
ADH Adhesive
- 2 Hytherm tapered/flat board Insulation  
mechanically fixed with Ecoline insulation  
washers and fixings (thickness to achieve  
design U-value and/or design fall)
- 3 Vernis Antac ST primer
- 4 Axter Vapour Control Layer
- 5 Concrete substrate  
(by specialist subcontractor)
- 6 Heat welded seam - 40mm
- 7 ADH Adhesive
- 8 Mechanically fixed hard edge/batten  
(by specialist subcontractor)
- 9 ECO/R cover strip
- 10 ECOMETAL preformed PVC coated  
metal trim mechanical (MTP) fixing at  
200mm ctrs
- 11 Guttering by other



Do Not Scale. All dimensions to be checked on site by the Axtershield Installer

Axter provide detail drawings as part of our technical design service. Such drawings should only be used as a guide during the design process and should not be utilised during construction. Axter accepts no liability for misuse of this service.

PROJECT	AXTER - STANDARD DETAIL		DRAWING			
			AXTER WARM ROOF - ECOLINE ADH SYSTEM TYPICAL DRIP TO GUTTER DETAIL - CONCRETE SUBSTRATE			
CLIENT	N/A	DWG.No	SCALE	DATE	REV	
		WR.C.EL.adh.40	1:5 @ A4	10.16	N/A	



www.axter.co.uk  
info@axterltd.co.uk  
01473 724 056

Axter Ltd.  
West Road, Ransomes Europark,  
Ipswich, Suffolk, IP3 9SX