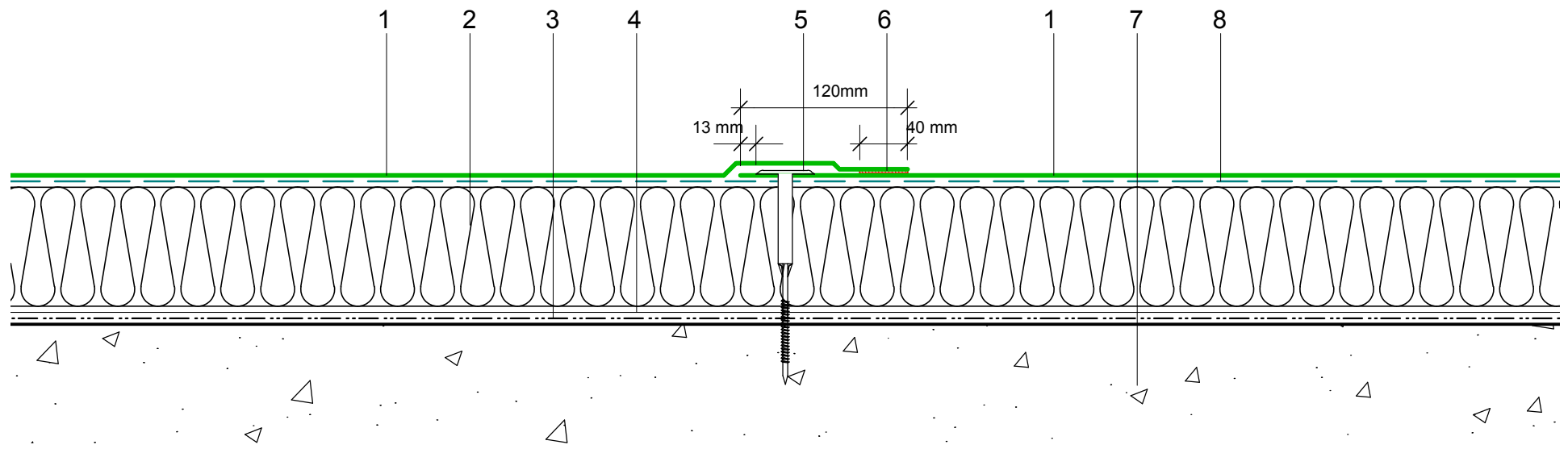


- 1 ECOLINE ADH fleeceback  
single ply membrane fully bonded  
using ADH Adhesive
- 2 Hytherm tapered/flat board Insulation  
mechanically fixed with Ecoline insulation  
washers and fixings (thickness to achieve  
design U-value and/or design fall)
- 3 Vernis Antac ST primer
- 4 Axter Vapour Control Layer
- 5 ECOLINE Tubular Washer and  
mechanical fastener (C) fixing
- 6 Longitudinal /Transversal Lap Joint  
(with heat welded seam - 40mm)
- 7 Concrete substrate
- 8 ADH Adhesive



0 25 50 100 200 300 400 500mm  
Do Not Scale. All dimensions to be checked on site by the Axtersfield Installer

Axter provide detail drawings as part of our technical design service. Such drawings should only be used as a guide during the design process and should not be utilised during construction. Axter accepts no liability for misuse of this service.

PROJECT	AXTER - STANDARD DETAIL
CLIENT	N/A

DRAWING	AXTER WARM ROOF - ECOLINE ADH SYSTEM TRANSVERSAL/LONGITUDINAL JOINT DETAIL - CONCRETE SUBSTRATE			
DWG.No	SCALE	DATE	REV	
WR.C.EL.adh.140	1:5 @ A4	10.16	N/A	



www.axter.co.uk  
info@axterltd.co.uk  
01473 724 056

Axter Ltd,  
West Road, Ransomes Europark,  
Ipswich, Suffolk, IP3 9SX