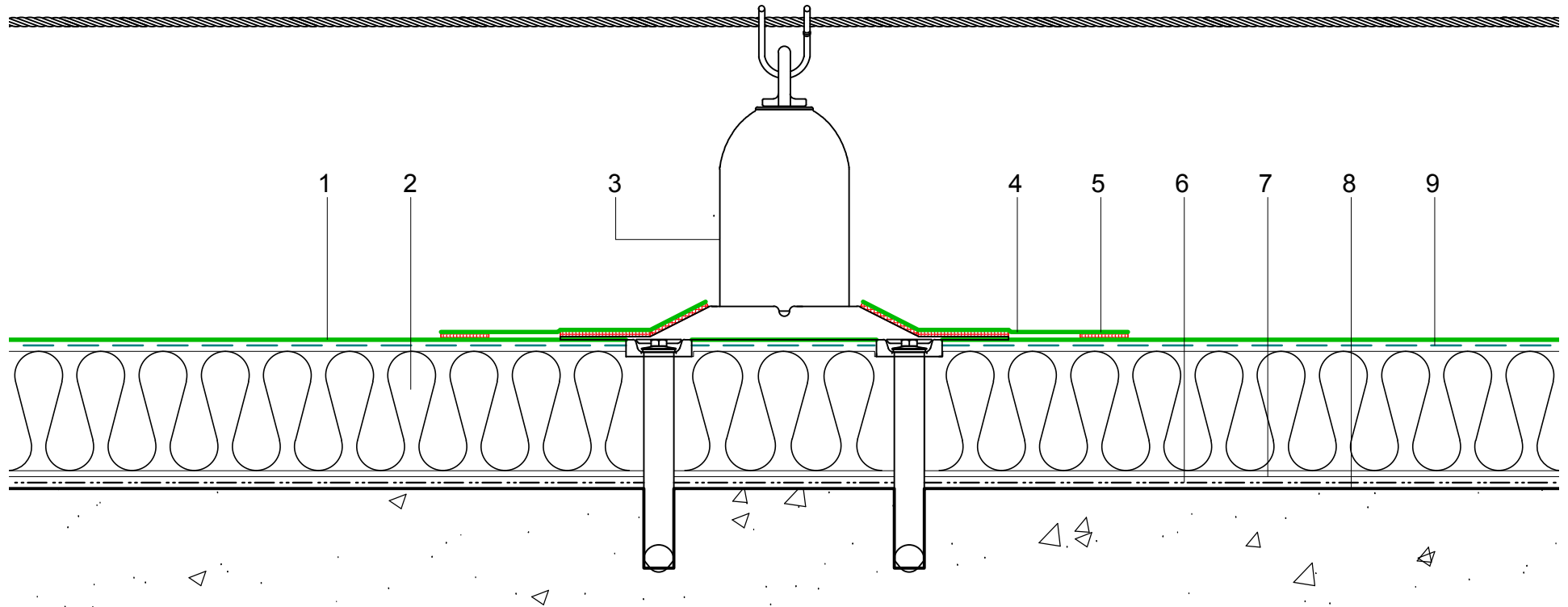


- | | | | |
|---|---|---|--|
| 1 | ECOLINE ADH fleeceback single ply membrane fully bonded using ADH Adhesive | 3 | Latchways Constant Force Post - secured to deck. |
| 2 | Hytherm tapered/flat board Insulation mechanically fixed with Ecoline insulation washers and fixings (thickness to achieve design U-value and/or design fall) | 4 | ECO/R cover strip |
| | | 5 | Heat welded seam - 40mm |
| | | 6 | Vernis Antac ST primer |
| | | 7 | Axter Vapour Control Layer |
| | | 8 | Concrete substrate (by specialist subcontractor) |
| | | 9 | ADH Adhesive |



Do Not Scale. All dimensions to be checked on site by the Axtershield Installer

Axter provide detail drawings as part of our technical design service. Such drawings should only be used as a guide during the design process and should not be utilised during construction. Axter accepts no liability for misuse of this service.

| | | | | | | |
|---------|-------------------------|-----|--|----------|-------|-----|
| PROJECT | AXTER - STANDARD DETAIL | | DRAWING AXTER WARM ROOF - ECOLINE ADH SYSTEM TYPICAL CONSTANT FORCE POST DETAIL - CONCRETE SUBSTRATE | | | |
| | CLIENT | N/A | DWG.No | SCALE | DATE | REV |
| | | | WR.C.EL.adh.170 | 1:5 @ A4 | 10.16 | N/A |



www.axter.co.uk
info@axterltd.co.uk
01473 724 056

Axter Ltd.
West Road, Ransomes Europark,
Ipswich, Suffolk, IP3 9SX