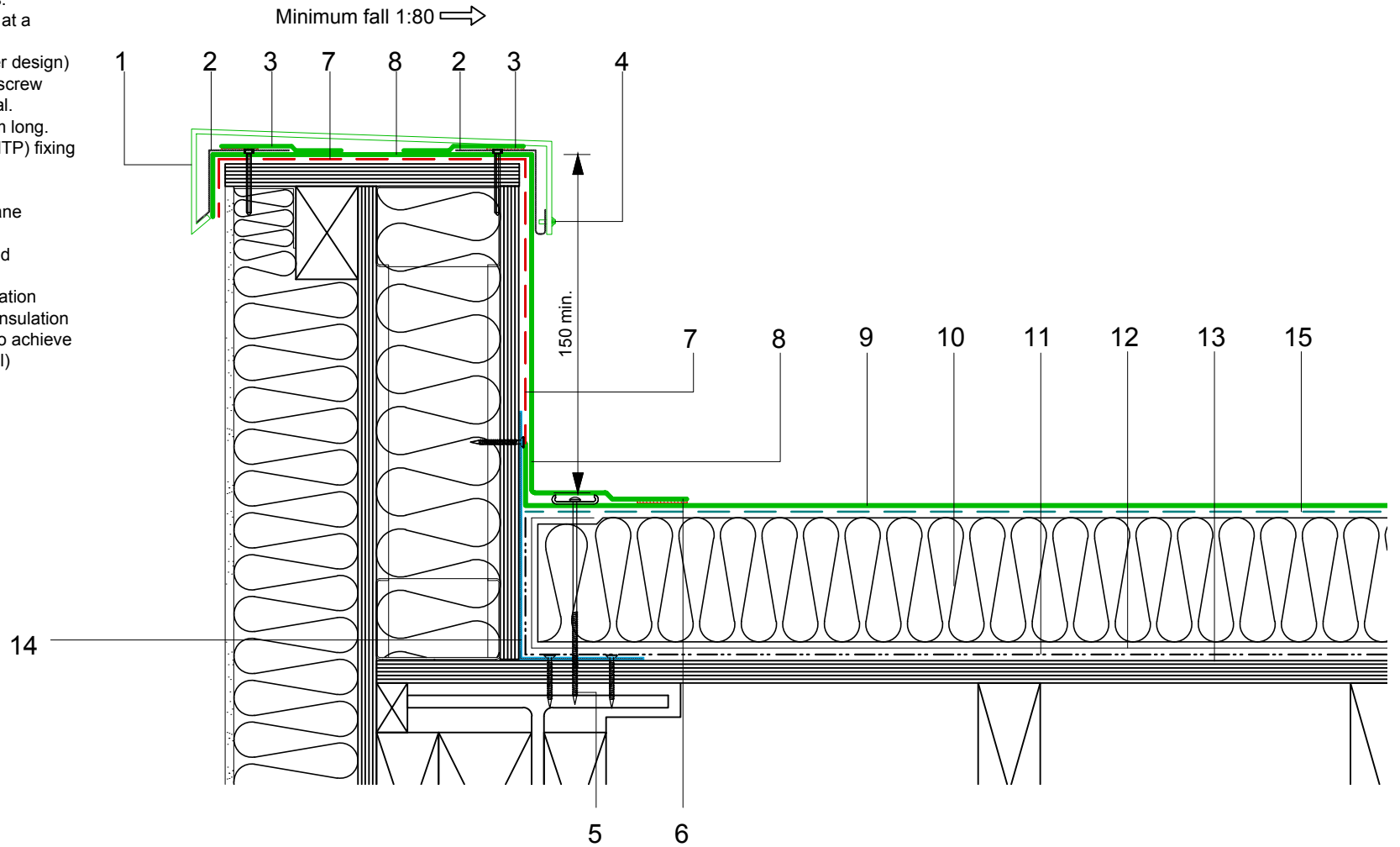


- 1 Axter Bespoke Metal coping panel
- 2 ECOMETAL 0.7mm thick preformed PVC coated metal retaining clips bonded to roof membrane and mechanically fixed through the top using two S/Steel screws.  
nb: Retaining clips to be spaced at a maximum of 600mm centres.  
(In accordance with Axter partner design)
- 3 ECO/R cover strip bonded over screw heads to create a waterproof seal.
- 4 S/Steel flange head screw 15mm long.
- 5 Restraint bar and mechanical (MTP) fixing
- 6 Heat welded seam - 40mm
- 7 FM/D contact adhesive
- 8 ECOLINE FM single ply membrane
- 9 ECOLINE ADH fleeceback single ply membrane fully bonded using ADH Adhesive
- 10 Hytherm tapered/flat board Insulation mechanically fixed with Ecoline insulation washers and fixings (thickness to achieve design U-value and/or design fall)
- 11 Vernis Antac ST primer
- 12 Axter Vapour Control Layer
- 13 Plywood substrate (by specialist subcontractor)
- 14 Galvanised bent metal angle mechanically fixed at perimeter (by specialist subcontractor)
- 15 ADH Adhesive



Do Not Scale. All dimensions to be checked on site by the Axtersfield Installer

Axter provide detail drawings as part of our technical design service. Such drawings should only be used as a guide during the design process and should not be utilised during construction. Axter accepts no liability for misuse of this service.

PROJECT	AXTER - STANDARD DETAIL
CLIENT	N/A

DRAWING	AXTER WARM ROOF - ECOLINE ADH SYSTEM TYPICAL BESPOKE PARAPET COPING DETAIL - PLYWOOD SUBSTRATE			
DWG.No	SCALE	DATE	REV	
WR.P.EL.adh.61	1:5 @ A4	10.16	N/A	



www.axter.co.uk  
info@axterltd.co.uk  
01473 724 056

Axter Ltd,  
West Road, Ransomes Europark,  
Ipswich, Suffolk, IP3 9SX