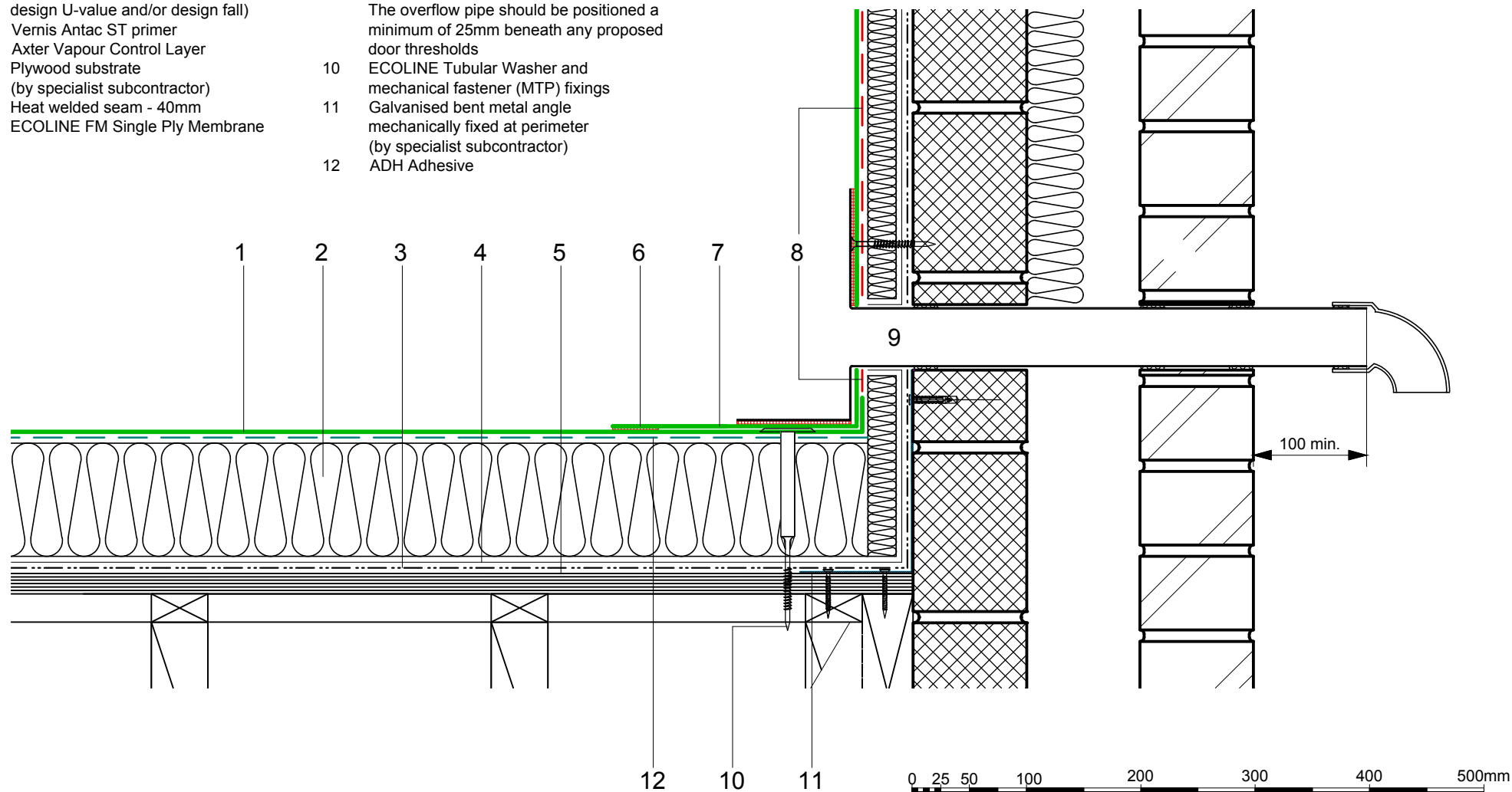


- | | | | |
|---|---|----|--|
| 1 | ECOLINE ADH fleeceback single ply membrane fully bonded using ADH Adhesive | 8 | FM/D contact adhesive |
| 2 | Hytherm tapered/flat board Insulation mechanically fixed with Ecoline insulation washers and fixings (thickness to achieve design U-value and/or design fall) | 9 | Axter RO overflow outlet with preformed PVC membrane flange (heat welded seam to field membrane) with pipe extension as required to suit parapet width - dimensions to be taken on site (90° downturn) |
| 3 | Vernis Antac ST primer | | The overflow pipe should be positioned a minimum of 25mm beneath any proposed door thresholds |
| 4 | Axter Vapour Control Layer | 10 | ECOLINE Tubular Washer and mechanical fastener (MTP) fixings |
| 5 | Plywood substrate (by specialist subcontractor) | 11 | Galvanised bent metal angle mechanically fixed at perimeter (by specialist subcontractor) |
| 6 | Heat welded seam - 40mm | 12 | ADH Adhesive |
| 7 | ECOLINE FM Single Ply Membrane | | |



Axter provide detail drawings as part of our technical design service. Such drawings should only be used as a guide during the design process and should not be utilised during construction. Axter accepts no liability for misuse of this service.

PROJECT	AXTER - STANDARD DETAIL
CLIENT	N/A

DRAWING	AXTER WARM ROOF - ECOLINE ADH SYSTEM TYPICAL OVERFLOW DETAIL - PLYWOOD SUBSTRATE			
DWG.No	SCALE	DATE	REV	
WR.P.EL.adh.150	1:5 @ A4	10.16	N/A	



www.axter.co.uk
info@axterltd.co.uk
01473 724 056

Axter Ltd,
West Road, Ransomes Europark,
Ipswich, Suffolk, IP3 9SX