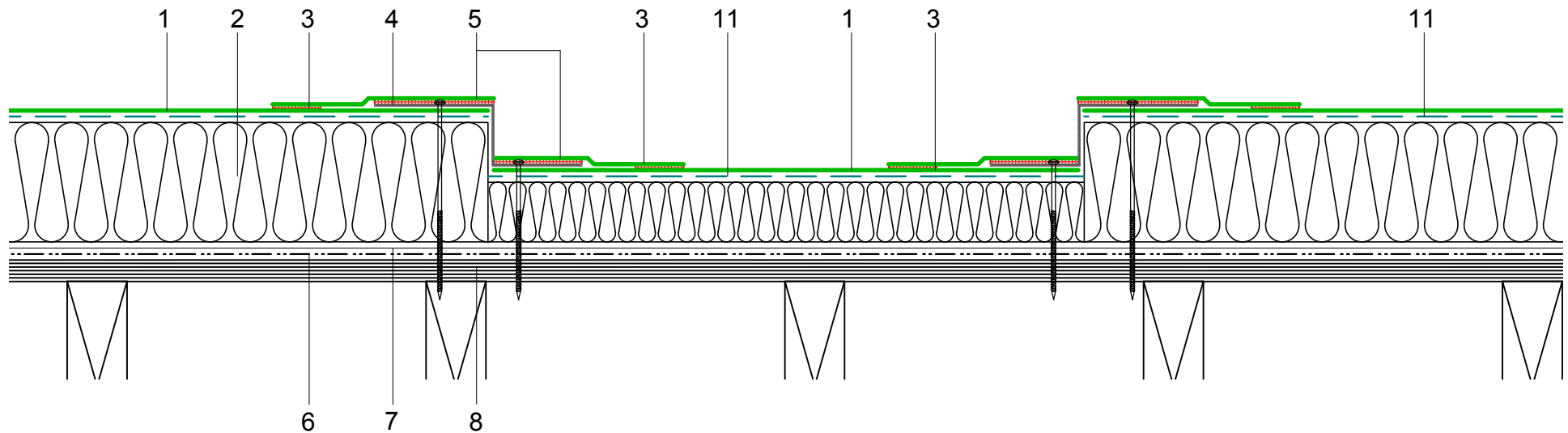
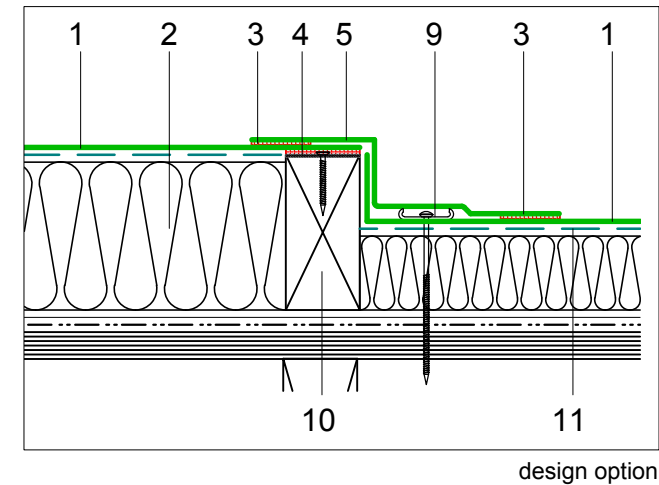


- 1 ECOLINE ADH fleeceback  
single ply membrane fully bonded  
using ADH Adhesive
- 2 Hytherm tapered/flat board Insulation  
mechanically fixed with Ecoline insulation  
washers and fixings (thickness to achieve  
design U-value and/or design fall)  
Reduced thickness to form gutter
- 3 Heat welded seam - 40mm
- 4 ECOMETAL preformed PVC coated  
metal with mechanical (MTP) fixings  
at 200mm ctrs
- 5 ECO/R cover strip
- 6 Vernis Antac ST primer
- 7 Axter Vapour Control Layer
- 8 Plywood substrate  
(by specialist subcontractor)
- 9 Restraint bar and mechanical (MTP) fixing
- 10 Mechanically fixed hard edge  
(by specialist subcontractor)
- 11 ADH Adhesive



Do Not Scale. All dimensions to be checked on site by the Axtershield Installer

Axter provide detail drawings as part of our technical design service. Such drawings should only be used as a guide during the design process and should not be utilised during construction. Axter accepts no liability for misuse of this service.

PROJECT	AXTER - STANDARD DETAIL		DRAWING AXTER WARM ROOF - ECOLINE ADH SYSTEM TYPICAL INTERNAL GUTTER DETAIL - PLYWOOD SUBSTRATE			
	CLIENT	N/A	DWG.No	SCALE	DATE	REV
			WR.P.EL.adh.190	1:5 @ A4	10.16	N/A



www.axter.co.uk  
info@axterltd.co.uk  
01473 724 056

Axter Ltd.  
West Road, Ransomes Europark,  
Ipswich, Suffolk, IP3 9SX