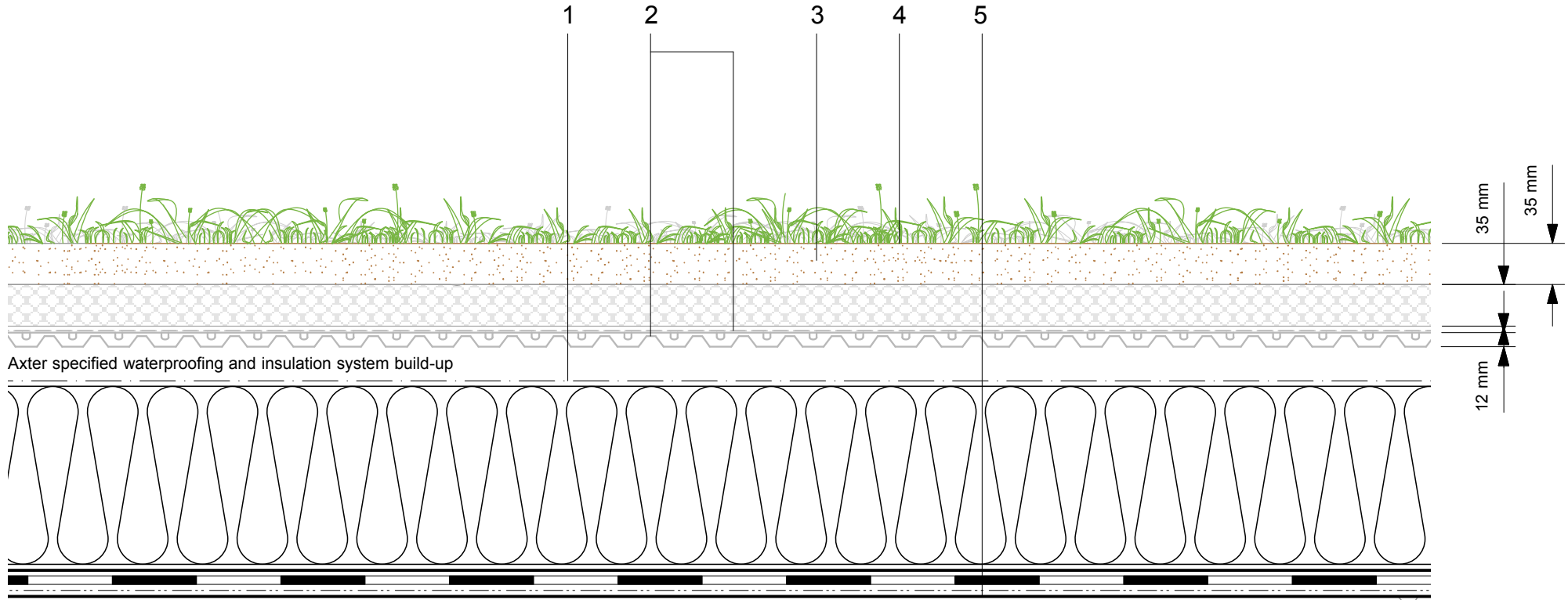


- 1 Axter specified waterproofing and insulation system build-up
- 2 Hydrodrain/12 drainage and filtration membrane
- 3 HYDROLITE (35mm substrate)
- 4 Axter Mixed Sedum Vegetation Blanket
- 5 Indicative structural build-up in accordance with the project architect's/engineer's design



Do Not Scale. All dimensions to be checked on site by the Axtershield Installer

Axter provides detail drawings as part of our technical design service. Such drawings should only be used as a guide during the design process and should not be utilised during construction. Axter accepts no liability for misuse of this service.

PROJECT	AXTER - STANDARD DETAIL
DRAWING NUMBER	GR.HI.10

DRAWING	AXTER HYDROLITE (EXTENSIVE) GREEN ROOF SYSTEM	
SCALE	1:5 @ A4	DATE
		2014

AXTER LTD
 West Road, Ransomes
 Europark, Ipswich,
 Suffolk, IP3 9SX.
 Tel:(01473)724056
 Fax:(01473)723263
 info@axterltd.co.uk

