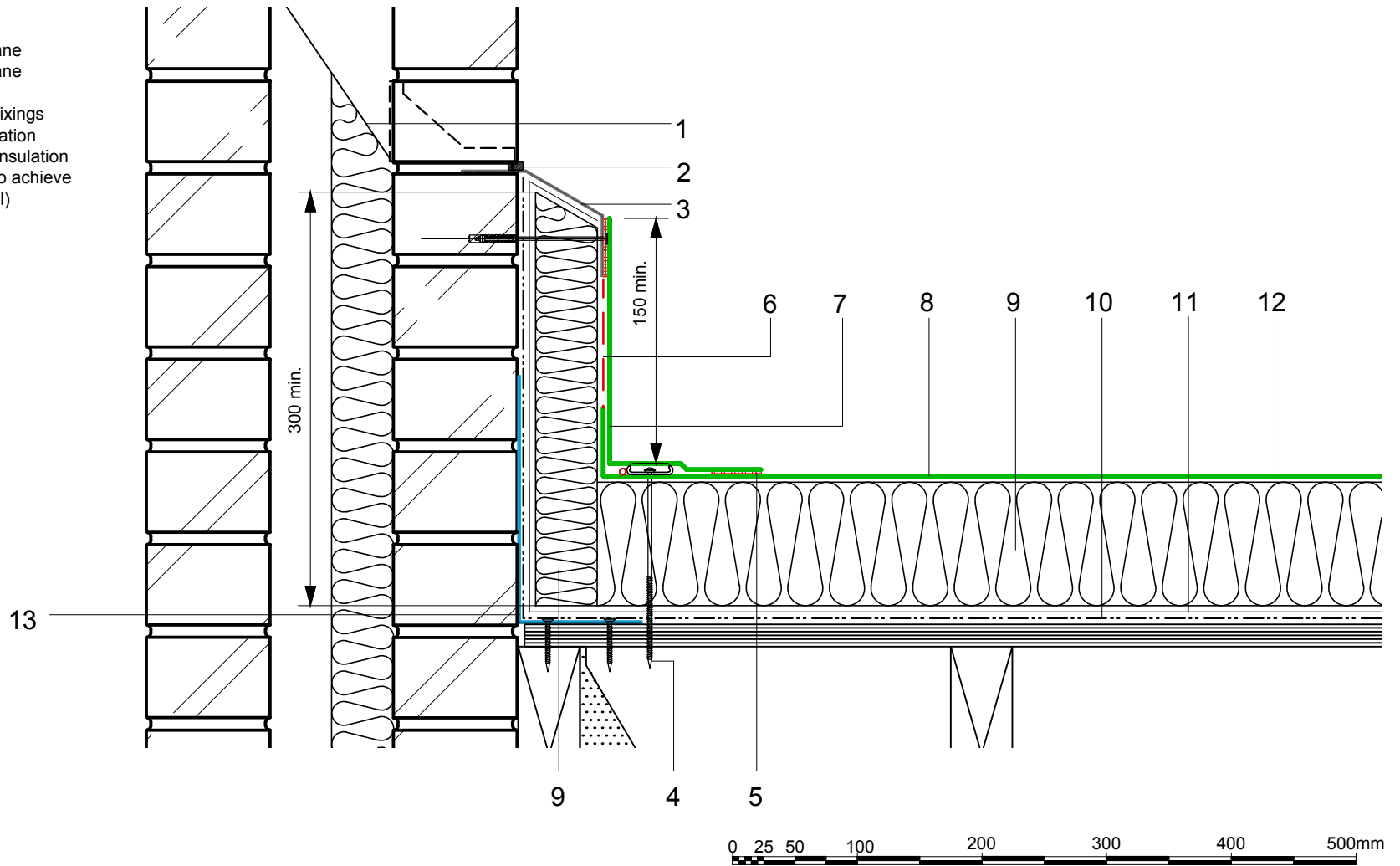


- 1 DPC/cavity tray/weep holes to drain internally or externally as specified
- 2 ECOLINE Sealant
- 3 ECOMETAL preformed PVC coated metal trim mechanical (MTP) fixing at 200mm ctrs
- 4 Restraint bar, cord and mechanical (MTP) fixing
- 5 Heat welded seam - 40mm
- 6 FM/D contact adhesive
- 7 ECOLINE FM single ply membrane
- 8 ECOLINE FM single ply membrane mechanically fixed with Ecoline membrane washers and (MTP) fixings
- 9 Hytherm tapered/flat board Insulation mechanically fixed with Ecoline insulation washers and fixings (thickness to achieve design U-value and/or design fall)
- 10 Vernis Antac ST primer
- 11 Axter Vapour Control Layer
- 12 Plywood substrate (by specialist subcontractor)
- 13 Galvanised bent metal angle mechanically fixed at perimeter (by specialist subcontractor)



Do Not Scale. All dimensions to be checked on site by the Axtersfield Installer

Axter provide detail drawings as part of our technical design service. Such drawings should only be used as a guide during the design process and should not be utilised during construction. Axter accepts no liability for misuse of this service.

PROJECT	AXTER - STANDARD DETAIL
CLIENT	N/A

DRAWING	AXTER WARM ROOF - ECOLINE FM SYSTEM INSULATED SKIRTING UPSTAND TO BRICK PARAPET WITH ECOMETAL FLASHING - PLYWOOD SUBSTRATE			
DWG.No	SCALE	DATE	REV	
WR.P.EL.fm.20	1:5 @ A4	10.16	N/A	



www.axter.co.uk  
info@axterltd.co.uk  
01473 724 056

Axter Ltd,  
West Road, Ransomes Europark,  
Ipswich, Suffolk, IP3 9SX