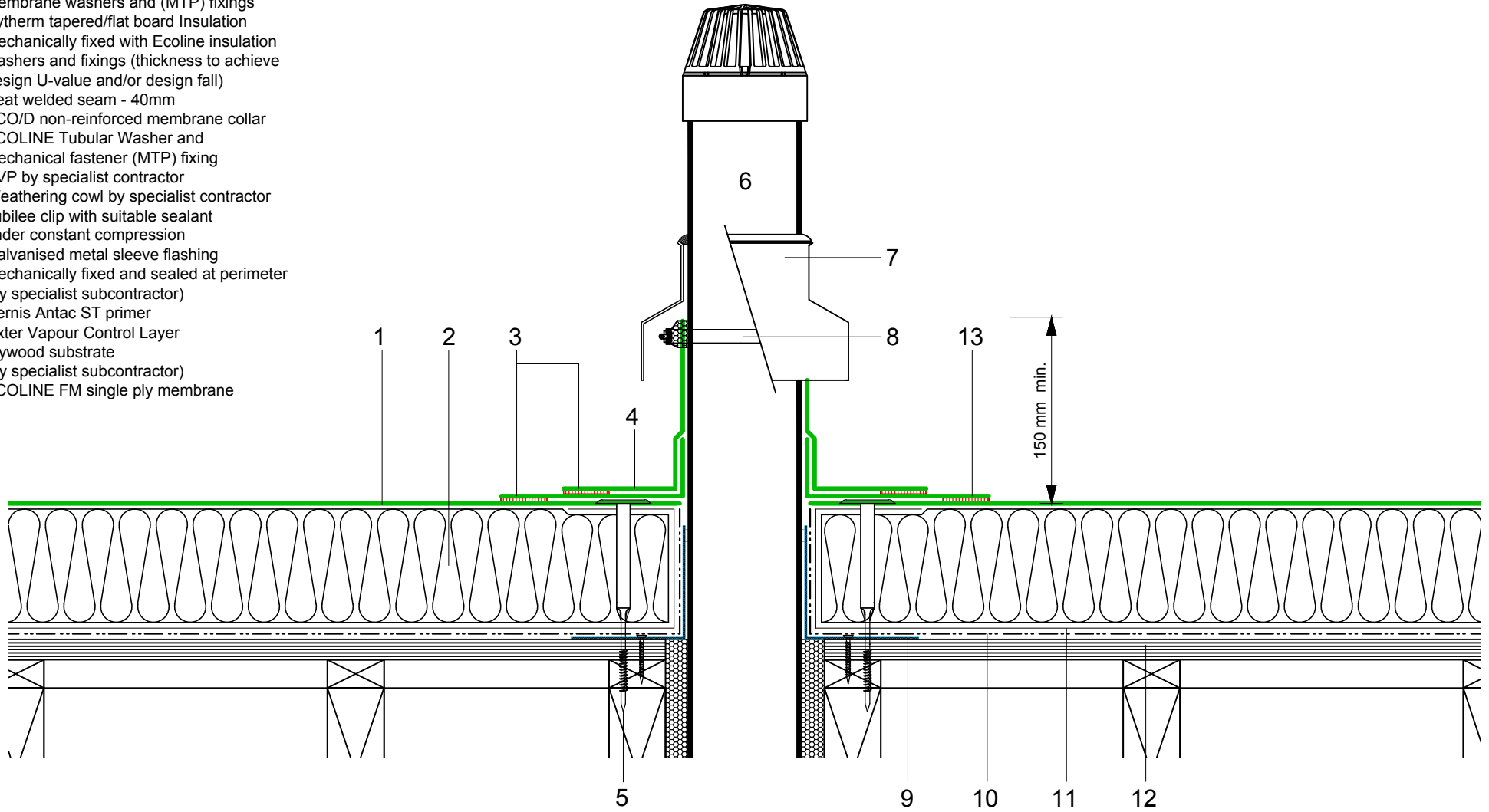


- 1 ECOLINE FM single ply membrane mechanically fixed with Ecoline membrane washers and (MTP) fixings
- 2 Hytherm tapered/flat board Insulation mechanically fixed with Ecoline insulation washers and fixings (thickness to achieve design U-value and/or design fall)
- 3 Heat welded seam - 40mm
- 4 ECO/D non-reinforced membrane collar
- 5 ECOLINE Tubular Washer and mechanical fastener (MTP) fixing
- 6 SVP by specialist contractor
- 7 Weathering cowl by specialist contractor
- 8 Jubilee clip with suitable sealant under constant compression
- 9 Galvanised metal sleeve flashing mechanically fixed and sealed at perimeter (by specialist subcontractor)
- 10 Vernis Antac ST primer
- 11 Axter Vapour Control Layer
- 12 Plywood substrate (by specialist subcontractor)
- 13 ECOLINE FM single ply membrane



Do Not Scale. All dimensions to be checked on site by the Axtersfield Installer

Axter provide detail drawings as part of our technical design service. Such drawings should only be used as a guide during the design process and should not be utilised during construction. Axter accepts no liability for misuse of this service.

PROJECT	AXTER - STANDARD DETAIL
CLIENT	N/A

DRAWING	AXTER WARM ROOF - ECOLINE FM SYSTEM TYPICAL SVP PENETRATION DETAIL (WITH WEATHERING COWL) - PLYWOOD SUBSTRATE			
DWG.No	SCALE	DATE	REV	
WR.P.EL.fm.91	1:5 @ A4	10.16	N/A	



www.axter.co.uk
info@axterltd.co.uk
01473 724 056

Axter Ltd,
West Road, Ransomes Europark,
Ipswich, Suffolk, IP3 9SX