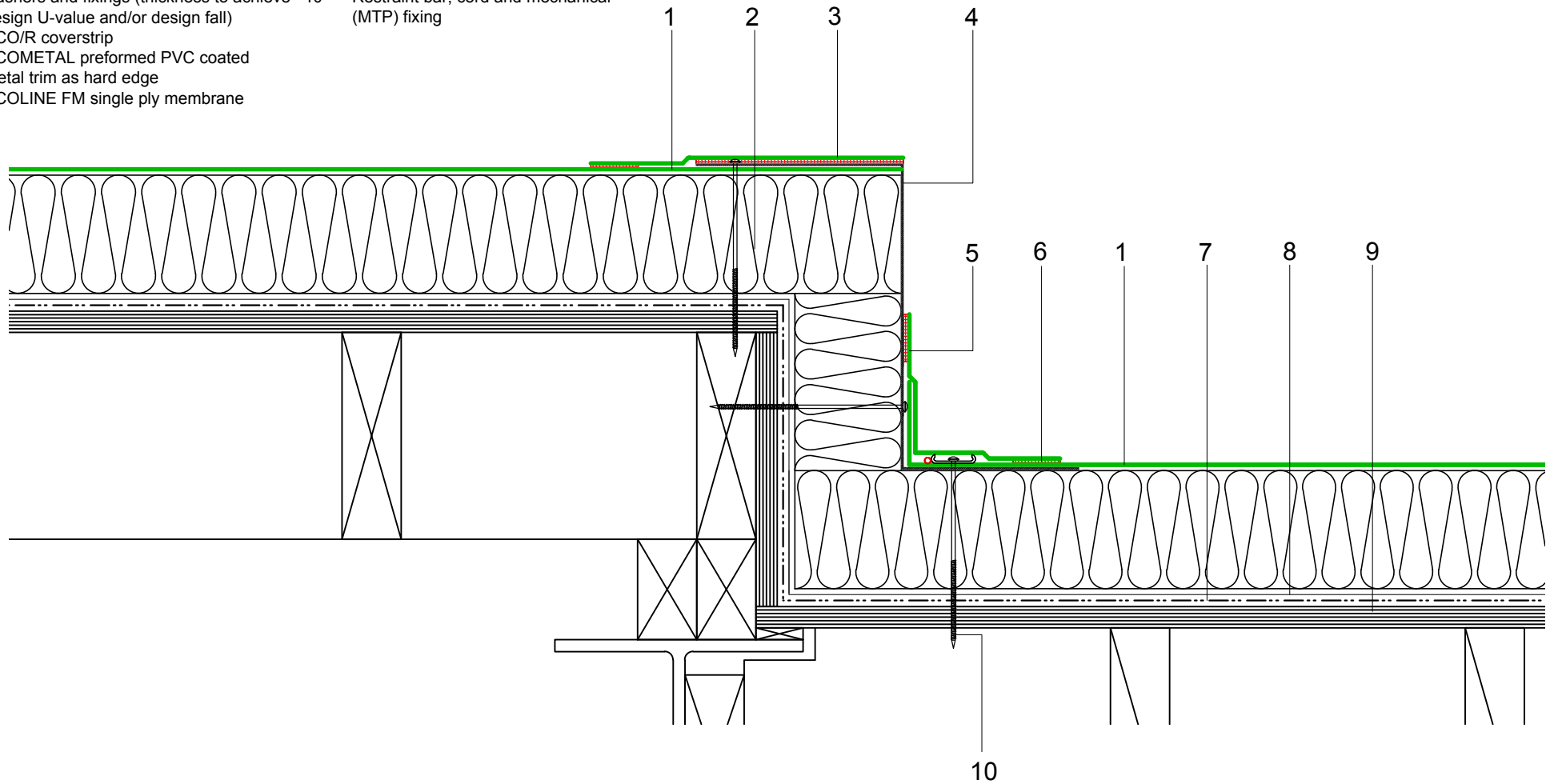


- | | | | |
|---|---|----|---|
| 1 | ECOLINE FM single ply membrane mechanically fixed with Ecoline membrane washers and (MTP) fixings | 6 | Heat welded seam - 40mm |
| 2 | Hytherm tapered/flat board Insulation mechanically fixed with Ecoline insulation washers and fixings (thickness to achieve design U-value and/or design fall) | 7 | Vernis Antac ST primer |
| 3 | ECO/R coverstrip | 8 | Axter Vapour Control Layer |
| 4 | ECOMETAL preformed PVC coated metal trim as hard edge | 9 | Plywood substrate (by specialist subcontractor) |
| 5 | ECOLINE FM single ply membrane | 10 | Restraint bar, cord and mechanical (MTP) fixing |



Do Not Scale. All dimensions to be checked on site by the Axtershield Installer

Axter provide detail drawings as part of our technical design service. Such drawings should only be used as a guide during the design process and should not be utilised during construction. Axter accepts no liability for misuse of this service.

PROJECT	AXTER - STANDARD DETAIL		DRAWING			
			AXTER WARM ROOF - ECOLINE FM SYSTEM TYPICAL CHANGE IN ROOF LEVEL/BOX GUTTER EDGE DETAIL - PLYWOOD SUBSTRATE			
CLIENT	N/A	DWG.No	SCALE	DATE	REV	
		WR.P.EL.fm.100	1:5 @ A4	10.16	N/A	



www.axter.co.uk
info@axterltd.co.uk
01473 724 056

Axter Ltd.
West Road, Ransomes Europark,
Ipswich, Suffolk, IP3 9SX