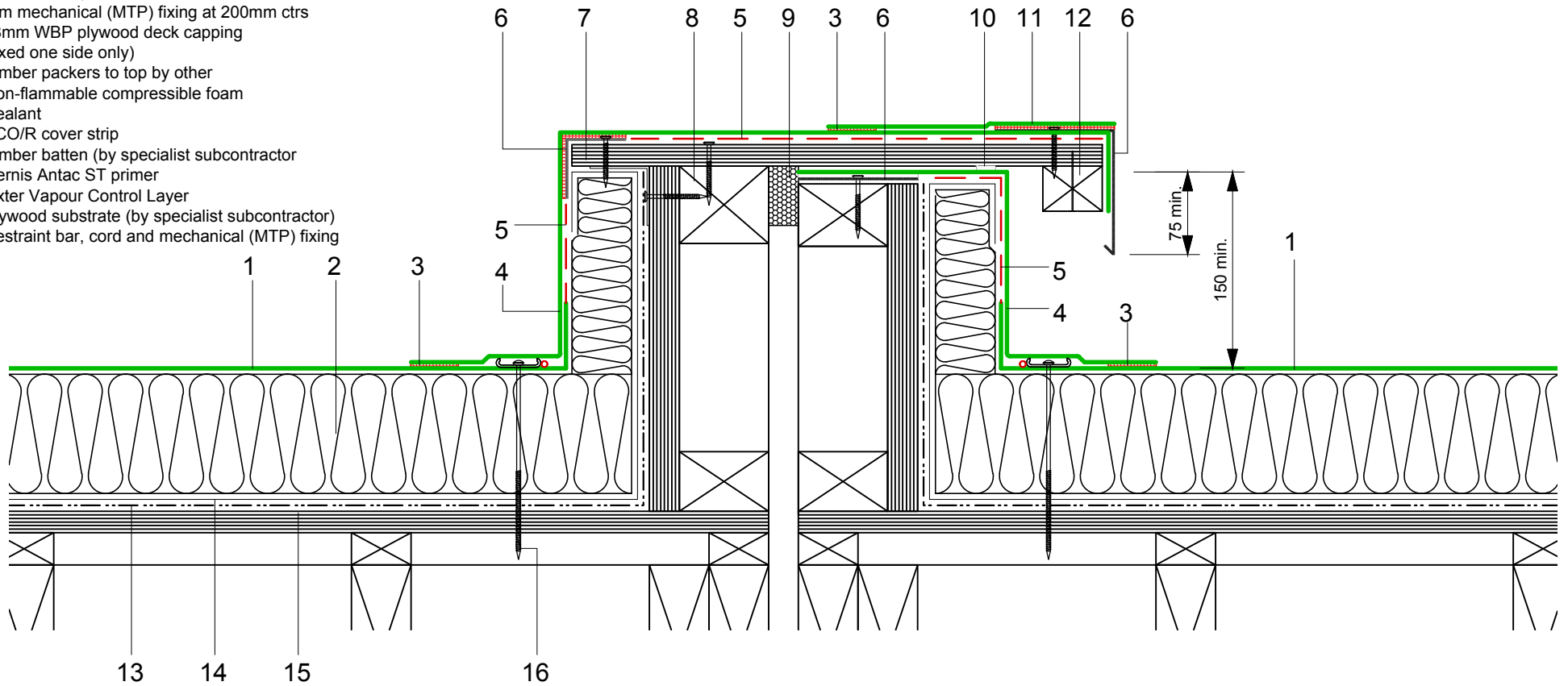


- 1 ECOLINE FM single ply membrane mechanically fixed with Ecoline membrane washers and (MTP) fixings
- 2 Hytherm tapered/flat board Insulation mechanically fixed with Ecoline insulation washers and fixings (thickness to achieve design U-value and/or design fall)
- 3 Heat welded seam - 40mm
- 4 ECOLINE FM Single Ply Membrane
- 5 FM/D contact adhesive
- 6 ECOMETAL preformed PVC coated metal trim mechanical (MTP) fixing at 200mm ctrs
- 7 18mm WBP plywood deck capping (fixed one side only)
- 8 Timber packers to top by other
- 9 Non-flammable compressible foam
- 10 Sealant
- 11 ECO/R cover strip
- 12 Timber batten (by specialist subcontractor)
- 13 Vernis Antac ST primer
- 14 Axter Vapour Control Layer
- 15 Plywood substrate (by specialist subcontractor)
- 16 Restraint bar, cord and mechanical (MTP) fixing



Do Not Scale. All dimensions to be checked on site by the Axtershield Installer

Axter provide detail drawings as part of our technical design service. Such drawings should only be used as a guide during the design process and should not be utilised during construction. Axter accepts no liability for misuse of this service.

PROJECT	AXTER - STANDARD DETAIL
CLIENT	N/A

DRAWING	AXTER WARM ROOF - ECOLINE FM SYSTEM TYPICAL MOVEMENT JOINT - TWIN KERB DETAIL - PLYWOOD SUBSTRATE			
DWG.No	SCALE	DATE	REV	
WR.P.EL.fm.130	1:5 @ A4	10.16	N/A	



www.axter.co.uk
info@axterltd.co.uk
01473 724 056

Axter Ltd,
West Road, Ransomes Europark,
Ipswich, Suffolk, IP3 9SX