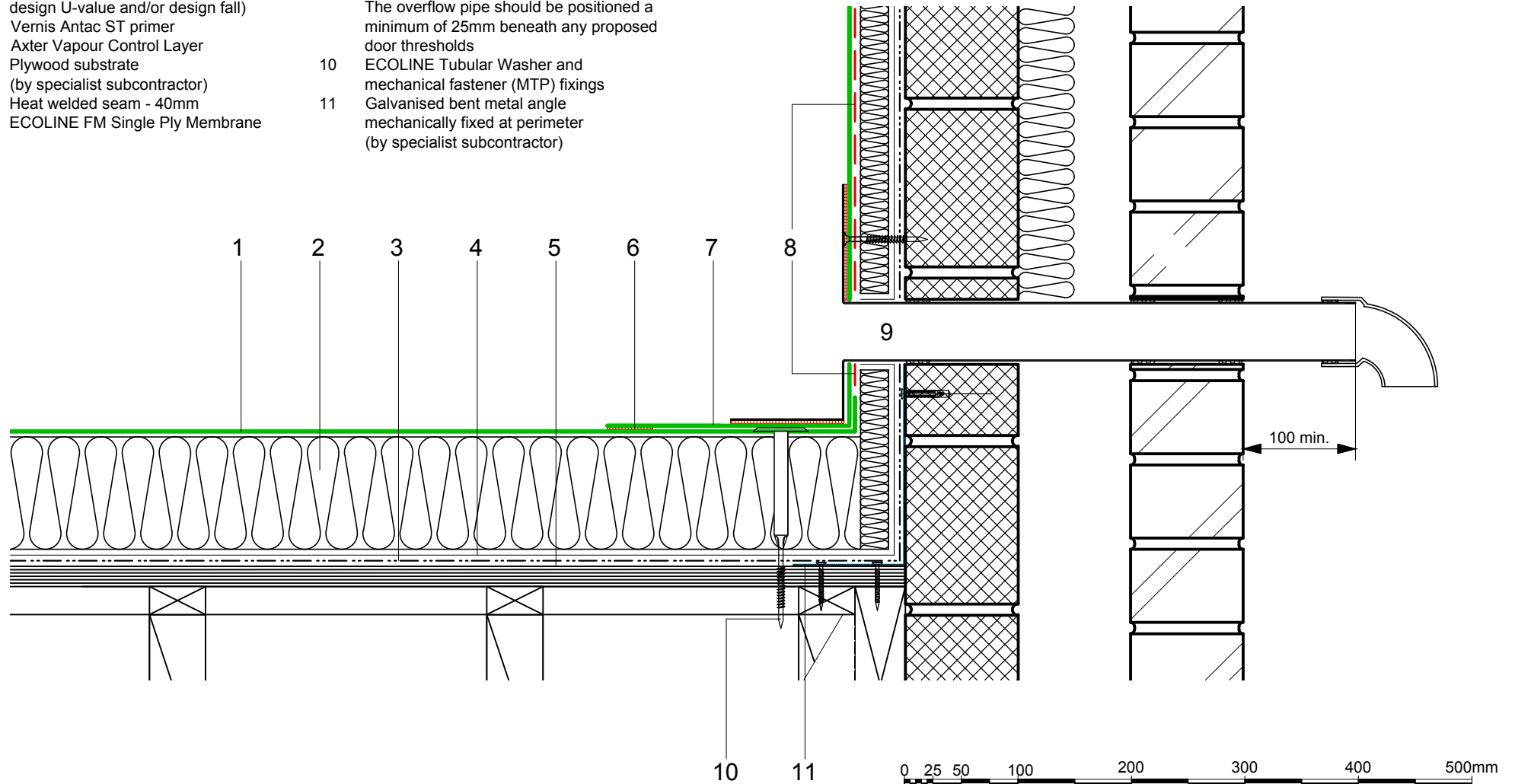


- |   |                                                                                                                                                               |    |                                                                                                                                                                                                        |
|---|---------------------------------------------------------------------------------------------------------------------------------------------------------------|----|--------------------------------------------------------------------------------------------------------------------------------------------------------------------------------------------------------|
| 1 | ECOLINE FM single ply membrane mechanically fixed with Ecoline membrane washers and (MTP) fixings                                                             | 8  | FM/D contact adhesive                                                                                                                                                                                  |
| 2 | Hytherm tapered/flat board Insulation mechanically fixed with Ecoline insulation washers and fixings (thickness to achieve design U-value and/or design fall) | 9  | Axter RO overflow outlet with preformed PVC membrane flange (heat welded seam to field membrane) with pipe extension as required to suit parapet width - dimensions to be taken on site (90° downturn) |
| 3 | Vernis Antac ST primer                                                                                                                                        |    | The overflow pipe should be positioned a minimum of 25mm beneath any proposed door thresholds                                                                                                          |
| 4 | Axter Vapour Control Layer                                                                                                                                    | 10 | ECOLINE Tubular Washer and mechanical fastener (MTP) fixings                                                                                                                                           |
| 5 | Plywood substrate (by specialist subcontractor)                                                                                                               | 11 | Galvanised bent metal angle mechanically fixed at perimeter (by specialist subcontractor)                                                                                                              |
| 6 | Heat welded seam - 40mm                                                                                                                                       |    |                                                                                                                                                                                                        |
| 7 | ECOLINE FM Single Ply Membrane                                                                                                                                |    |                                                                                                                                                                                                        |



Do Not Scale. All dimensions to be checked on site by the Axtershield Installer

Axter provide detail drawings as part of our technical design service. Such drawings should only be used as a guide during the design process and should not be utilised during construction. Axter accepts no liability for misuse of this service.

PROJECT	AXTER - STANDARD DETAIL		DRAWING			
			AXTER WARM ROOF - ECOLINE FM SYSTEM TYPICAL OVERFLOW DETAIL - PLYWOOD SUBSTRATE			
CLIENT	N/A	DWG.No	SCALE	DATE	REV	
		WR.P.EL.fm.150	1:5 @ A4	10.16	N/A	



www.axter.co.uk  
info@axterltd.co.uk  
01473 724 056

Axter Ltd.  
West Road, Ransomes Europark,  
Ipswich, Suffolk, IP3 9SX