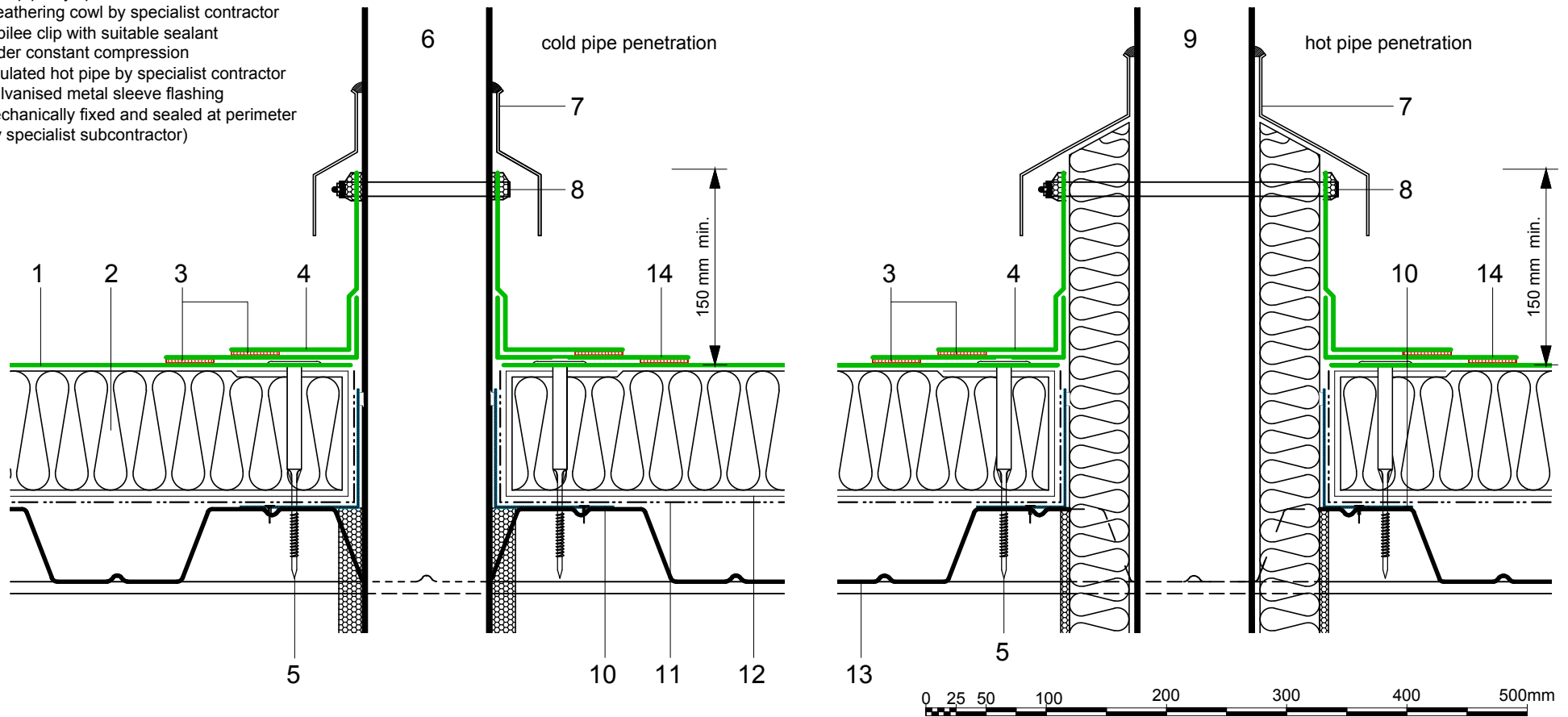


- | | | | |
|----|---|----|--|
| 1 | ECOLINE FM single ply membrane mechanically fixed with Ecoline membrane washers and (MTP) fixings | 11 | Vernis Antac ST primer |
| 2 | Hytherm tapered/flat board Insulation mechanically fixed with Ecoline insulation washers and fixings (thickness to achieve design U-value and/or design fall) | 12 | Axter Vapour Control Layer |
| 3 | Heat welded seam - 40mm | 13 | Metal deck substrate (by specialist subcontractor) |
| 4 | ECO/D non-reinforced membrane collar | 14 | ECOLINE FM single ply membrane |
| 5 | ECOLINE Tubular Washer and mechanical fastener (MTP) fixing | | |
| 6 | Cold pipe by specialist contractor | | |
| 7 | Weathering cowl by specialist contractor | | |
| 8 | Jubilee clip with suitable sealant under constant compression | | |
| 9 | Insulated hot pipe by specialist contractor | | |
| 10 | Galvanised metal sleeve flashing mechanically fixed and sealed at perimeter (by specialist subcontractor) | | |



Do Not Scale. All dimensions to be checked on site by the Axtershield Installer

Axter provide detail drawings as part of our technical design service. Such drawings should only be used as a guide during the design process and should not be utilised during construction. Axter accepts no liability for misuse of this service.

PROJECT	AXTER - STANDARD DETAIL		DRAWING			
			AXTER WARM ROOF - ECOLINE FM SYSTEM TYPICAL HOT & COLD PIPE PENETRATION DETAIL - METAL DECK			
CLIENT	N/A	DWG.No	SCALE	DATE	REV	
		WR.M.EL.fm.90	1:5 @ A4	10.16	N/A	



www.axter.co.uk
info@axterltd.co.uk
01473 724 056

Axter Ltd.
West Road, Ransomes Europark,
Ipswich, Suffolk, IP3 9SX