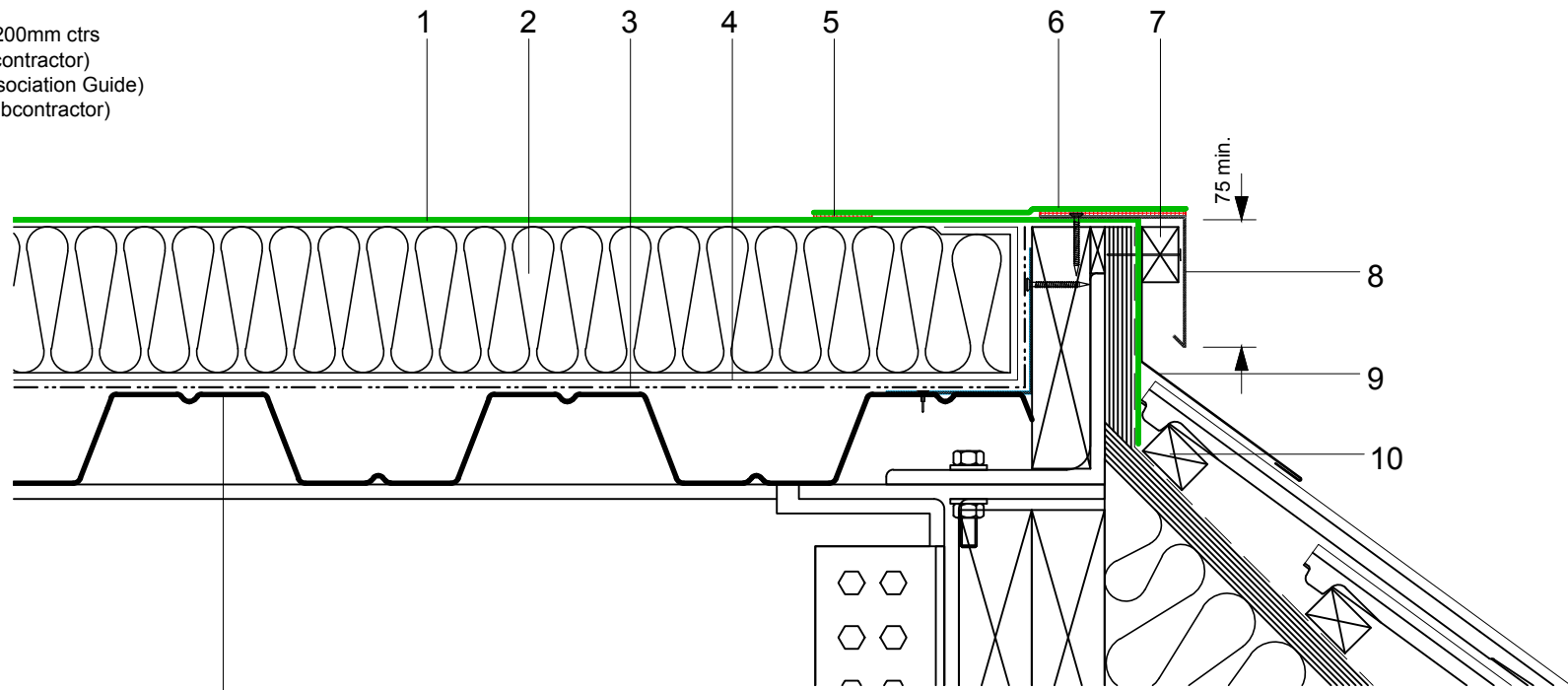



- 1 ECOLINE FM single ply membrane mechanically fixed with Ecoline membrane washers and (MTP) fixings
- 2 Hytherm tapered/flat board Insulation mechanically fixed with Ecoline insulation washers and fixings (thickness to achieve design U-value and/or design fall)
- 3 Vernis Antac ST primer
- 4 Axter Vapour Control Layer
- 5 Heat welded seam - 40mm
- 6 ECO/R cover strip
- 7 Mechanically fixed hard edge/batten (by specialist subcontractor)
- 8 ECOMETAL preformed PVC coated metal trim mechanical (MTP) fixing at 200mm ctrs
- 9 Lead apron flashing (by specialist subcontractor) (fixed in accordance to Lead Sheet Association Guide)
- 10 Batten and tiles/slates (by specialist subcontractor)
- 11 Metal deck substrate (by specialist subcontractor)



Do Not Scale. All dimensions to be checked on site by the Axtershield Installer

<p>Axter provide detail drawings as part of our technical design service. Such drawings should only be used as a guide during the design process and should not be utilised during construction. Axter accepts no liability for misuse of this service.</p>	<p>PROJECT</p> <p style="text-align: center;">AXTER - STANDARD DETAIL</p>	<p>DRAWING</p> <p style="text-align: center;">AXTER WARM ROOF - ECOLINE FM SYSTEM TYPICAL MANSARD EDGE DRIP DETAIL - METAL DECK</p>					
	<p>CLIENT</p> <p style="text-align: center;">N/A</p>	<p>DWG.No</p> <p style="text-align: center;">WR.M.EL.fm.110</p>	<p>SCALE</p> <p style="text-align: center;">1:5 @ A4</p>	<p>DATE</p> <p style="text-align: center;">10.16</p>	<p>REV</p> <p style="text-align: center;">N/A</p>	<p>www.axter.co.uk info@axterltd.co.uk 01473 724 056</p>	