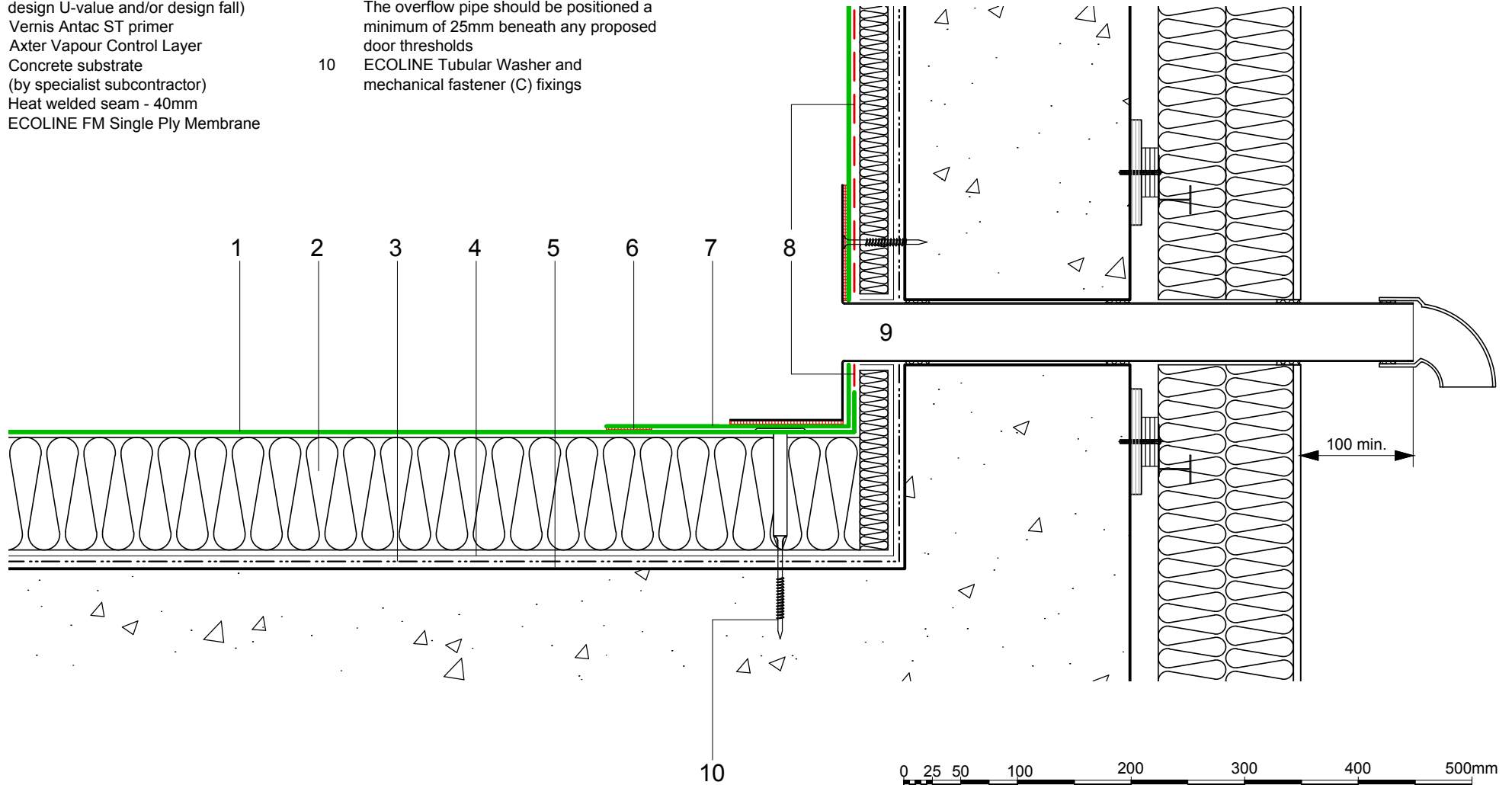


- |   |   |    |  |
|---|---|----|--|
| 1 | ECOLINE FM single ply membrane mechanically fixed with Ecoline membrane washers and (C) fixings   | 8  | FM/D contact adhesive  |
| 2 | Hytherm tapered/flat board Insulation mechanically fixed with Ecoline insulation washers and fixings (thickness to achieve design U-value and/or design fall) | 9  | Axter RO overflow outlet with preformed PVC membrane flange (heat welded seam to field membrane) with pipe extension as required to suit parapet width - dimensions to be taken on site (90° downturn) |
| 3 | Vernis Antac ST primer  |    | The overflow pipe should be positioned a minimum of 25mm beneath any proposed door thresholds  |
| 4 | Axter Vapour Control Layer  | 10 | ECOLINE Tubular Washer and mechanical fastener (C) fixings   |
| 5 | Concrete substrate (by specialist subcontractor)  |    |  |
| 6 | Heat welded seam - 40mm   |    |  |
| 7 | ECOLINE FM Single Ply Membrane  |    |  |



Axter provide detail drawings as part of our technical design service. Such drawings should only be used as a guide during the design process and should not be utilised during construction. Axter accepts no liability for misuse of this service.

PROJECT	AXTER - STANDARD DETAIL
CLIENT	N/A

DRAWING	AXTER WARM ROOF - ECOLINE FM SYSTEM TYPICAL OVERFLOW DETAIL - CONCRETE SUBSTRATE			
DWG.No	SCALE	DATE	REV	
WR.C.EL.fm.150	1:5 @ A4	10.16	N/A	



www.axter.co.uk  
info@axterltd.co.uk  
01473 724 056

Axter Ltd,  
West Road, Ransomes Europark,  
Ipswich, Suffolk, IP3 9SX