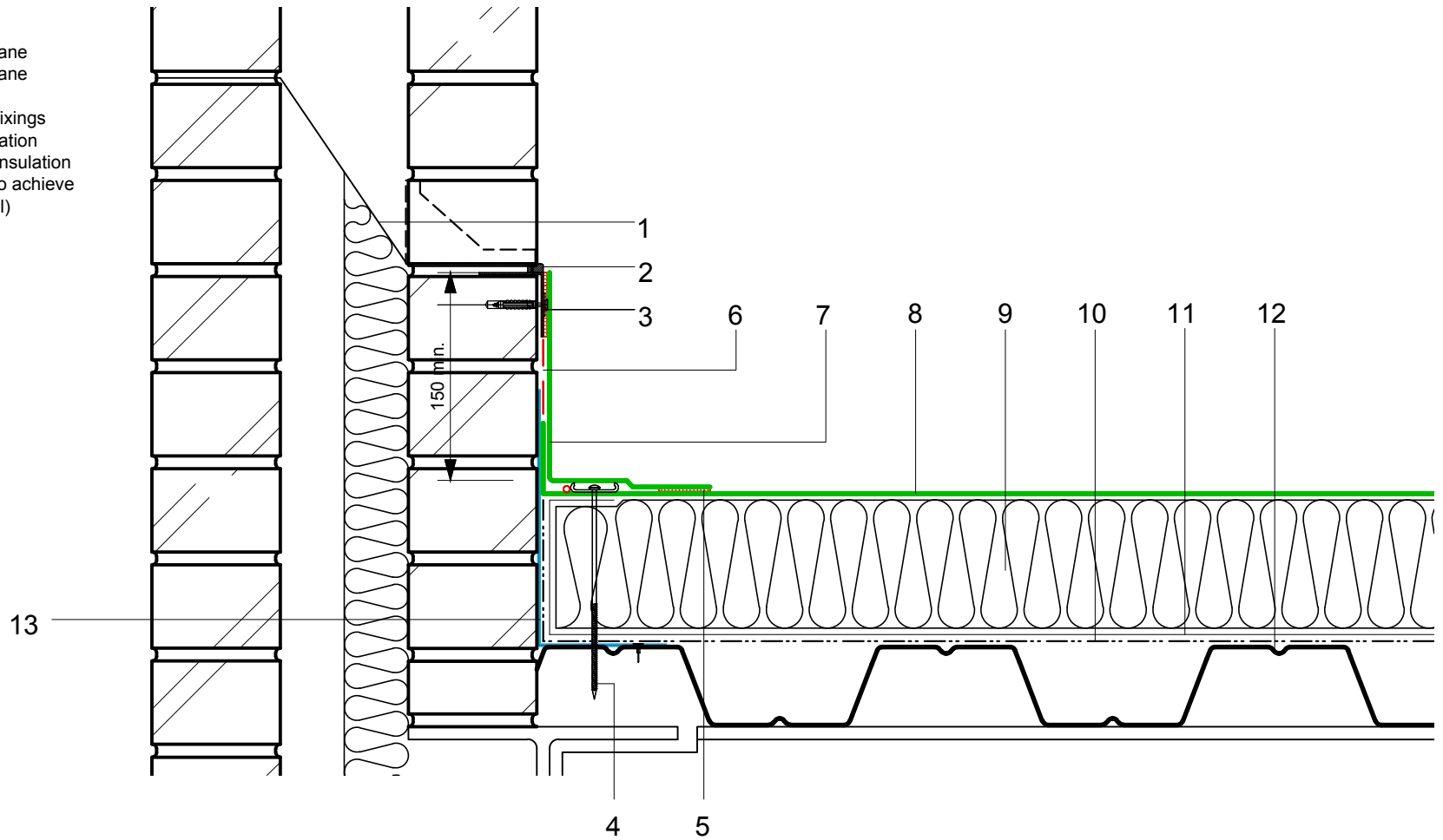



- 1 DPC/cavity tray/weep holes to drain internally or externally as specified
- 2 ECOFLEX Sealant
- 3 ECOMETAL preformed PVC coated metal trim mechanical (MTP) fixing at 200mm ctrs
- 4 Restraint bar, cord and mechanical (MTP) fixing
- 5 Heat welded seam - 40mm
- 6 FM/D contact adhesive
- 7 ECOFLEX FM single ply membrane
- 8 ECOFLEX FM single ply membrane mechanically fixed with Ecoflex membrane washers and (MTP) fixings
- 9 Hytherm tapered/flat board Insulation mechanically fixed with Ecoflex insulation washers and fixings (thickness to achieve design U-value and/or design fall)
- 10 Vernis Antac ST primer
- 11 Axter Vapour Control Layer
- 12 Metal deck substrate (by specialist subcontractor)
- 13 Galvanised bent metal angle mechanically fixed at perimeter (by specialist subcontractor)



Do Not Scale. All dimensions to be checked on site by the Axtersfield Installer

Axter provide detail drawings as part of our technical design service. Such drawings should only be used as a guide during the design process and should not be utilised during construction. Axter accepts no liability for misuse of this service.

PROJECT	AXTER - STANDARD DETAIL		DRAWING	AXTER WARM ROOF - ECOFLEX FM SYSTEM SKIRTING UPSTAND TO BRICK PARAPET WITH ECOMETAL FLASHING - METAL DECK					
CLIENT	N/A	DWG.No	WR.M.EF.fm.10	SCALE	1:5 @ A4	DATE	10.16	REV	N/A
						<small>www.axter.co.uk info@axterltd.co.uk 01473 724 056</small>		<small>Axter Ltd, West Road, Ransomes Europark, Ipswich, Suffolk, IP3 9SX</small>	