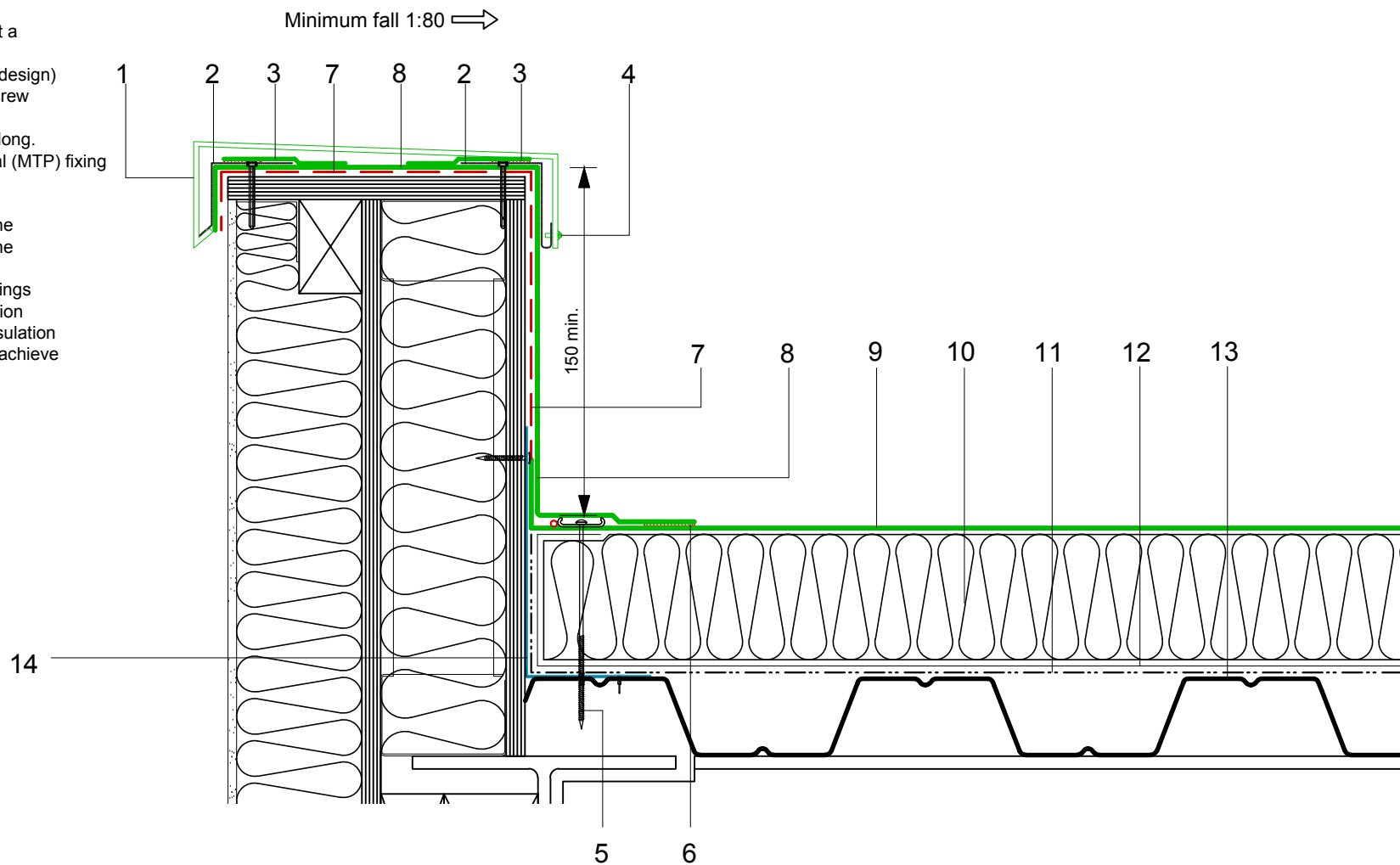


- 1 Axter Bespoke Metal coping panel
- 2 ECOMETAL 0.7mm thick preformed PVC coated metal retaining clips bonded to roof membrane and mechanically fixed through the top using two S/Steel screws.
nb: Retaining clips to be spaced at a maximum of 600mm centres.
(In accordance with Axter partner design)
- 3 ECO/R cover strip bonded over screw heads to create a waterproof seal.
- 4 S/Steel flange head screw 15mm long.
- 5 Restraint bar, cord and mechanical (MTP) fixing
- 6 Heat welded seam - 40mm
- 7 FM/D contact adhesive
- 8 ECOFLEX FM single ply membrane
- 9 ECOFLEX FM single ply membrane mechanically fixed with Ecoflex membrane washers and (MTP) fixings
- 10 Hytherm tapered/flat board Insulation mechanically fixed with Ecoflex insulation washers and fixings (thickness to achieve design U-value and/or design fall)
- 11 Vernis Antac ST primer
- 12 Axter Vapour Control Layer
- 13 Metal deck substrate (by specialist subcontractor)
- 14 Galvanised bent metal angle mechanically fixed at perimeter (by specialist subcontractor)



Do Not Scale. All dimensions to be checked on site by the Axtershield Installer

Axter provide detail drawings as part of our technical design service. Such drawings should only be used as a guide during the design process and should not be utilised during construction. Axter accepts no liability for misuse of this service.

PROJECT	AXTER - STANDARD DETAIL		DRAWING AXTER WARM ROOF - ECOFLEX FM SYSTEM TYPICAL BESPOKE PARAPET COPING DETAIL - METAL DECK			
	CLIENT	N/A	DWG.No WR.M.EF.fm.61	SCALE 1:5 @ A4	DATE 10.16	REV N/A



www.axter.co.uk
info@axterltd.co.uk
01473 724 056

Axter Ltd.
West Road, Ransomes Europark,
Ipswich, Suffolk, IP3 9SX