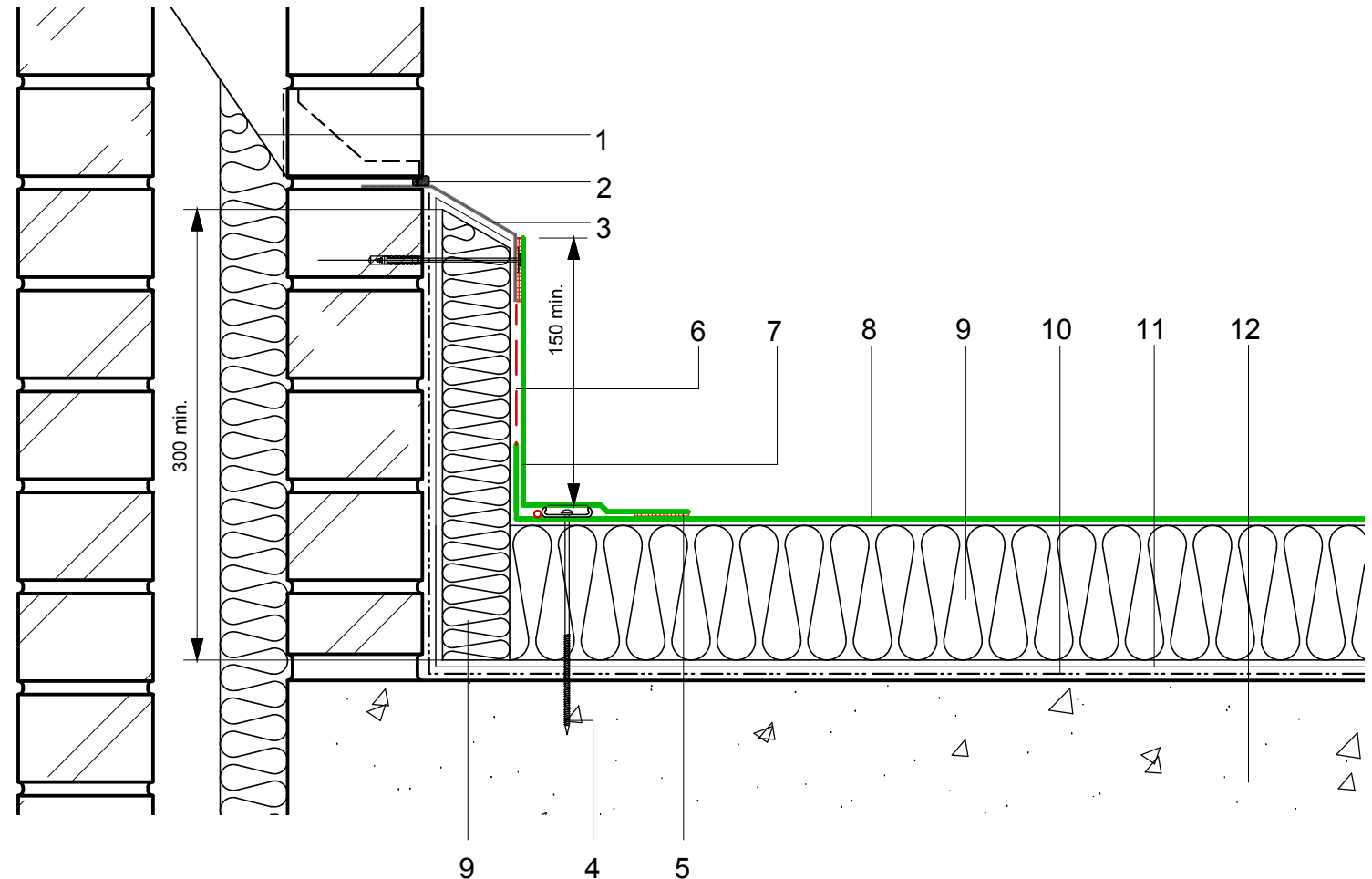


- 1 DPC/cavity tray/weep holes to drain internally or externally as specified
- 2 ECOFLEX Sealant
- 3 ECOMETAL preformed PVC coated metal trim mechanical (C) fixing at 200mm ctrs
- 4 Restraint bar, cord and mechanical (C) fixing
- 5 Heat welded seam - 40mm
- 6 FM/D contact adhesive
- 7 ECOFLEX FM single ply membrane
- 8 ECOFLEX FM single ply membrane mechanically fixed with Ecoflex membrane washers and (C) fixings
- 9 Hytherm tapered/flat board Insulation mechanically fixed with Ecoflex insulation washers and fixings (thickness to achieve design U-value and/or design fall)
- 10 Vernis Antac ST primer
- 11 Axter Vapour Control Layer
- 12 Concrete substrate (by specialist subcontractor)



Do Not Scale. All dimensions to be checked on site by the Axtershield Installer

<p>Axter provide detail drawings as part of our technical design service. Such drawings should only be used as a guide during the design process and should not be utilised during construction. Axter accepts no liability for misuse of this service.</p>	<p>PROJECT</p> <p style="text-align: center;">AXTER - STANDARD DETAIL</p>	<p>DRAWING</p> <p style="text-align: center;">AXTER WARM ROOF - ECOFLEX FM SYSTEM INSULATED SKIRTING UPSTAND TO BRICK PARAPET WITH ECOMETAL FLASHING - CONCRETE SUBSTRATE</p>					
	<p>CLIENT</p> <p style="text-align: center;">N/A</p>	<p>DWG.No</p> <p style="text-align: center;">WR.C.EF.fm.20</p>	<p>SCALE</p> <p style="text-align: center;">1:5 @ A4</p>	<p>DATE</p> <p style="text-align: center;">10.16</p>	<p>REV</p> <p style="text-align: center;">N/A</p>	<p>www.axter.co.uk info@axterltd.co.uk 01473 724 056</p>	