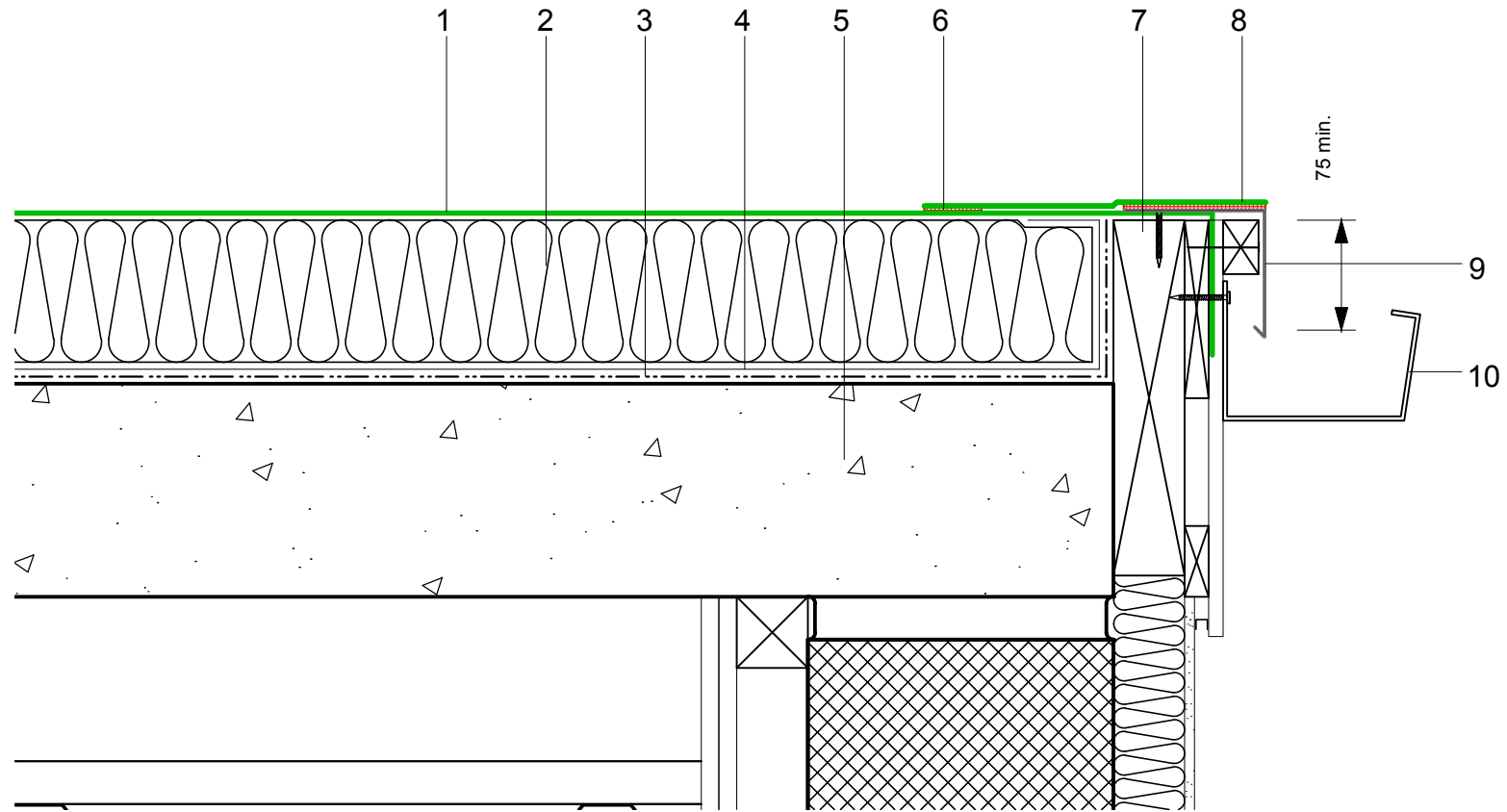


- 1 ECOFLEX FM single ply membrane mechanically fixed with Ecoflex membrane washers and (C) fixings
- 2 Hytherm tapered/flat board Insulation mechanically fixed with Ecoflex insulation washers and fixings (thickness to achieve design U-value and/or design fall)
- 3 Vernis Antac ST primer
- 4 Axter Vapour Control Layer
- 5 Concrete substrate (by specialist subcontractor)
- 6 Heat welded seam - 40mm
- 7 Mechanically fixed hard edge/batten (by specialist subcontractor)
- 8 ECO/R cover strip
- 9 ECOMETAL preformed PVC coated metal trim mechanical (MTP) fixing at 200mm ctrs
- 10 Guttering by other



Do Not Scale. All dimensions to be checked on site by the Axtershield Installer

Axter provide detail drawings as part of our technical design service. Such drawings should only be used as a guide during the design process and should not be utilised during construction. Axter accepts no liability for misuse of this service.

PROJECT	AXTER - STANDARD DETAIL
CLIENT	N/A

DRAWING	AXTER WARM ROOF - ECOFLEX FM SYSTEM TYPICAL DRIP TO GUTTER DETAIL - CONCRETE SUBSTRATE			
DWG.No	SCALE	DATE	REV	
WR.C.EF.fm.40	1:5 @ A4	10.16	N/A	

www.axter.co.uk
info@axterltd.co.uk
01473 724 056

Axter Ltd,
West Road, Ransomes Europark,
Ipswich, Suffolk, IP3 9SX