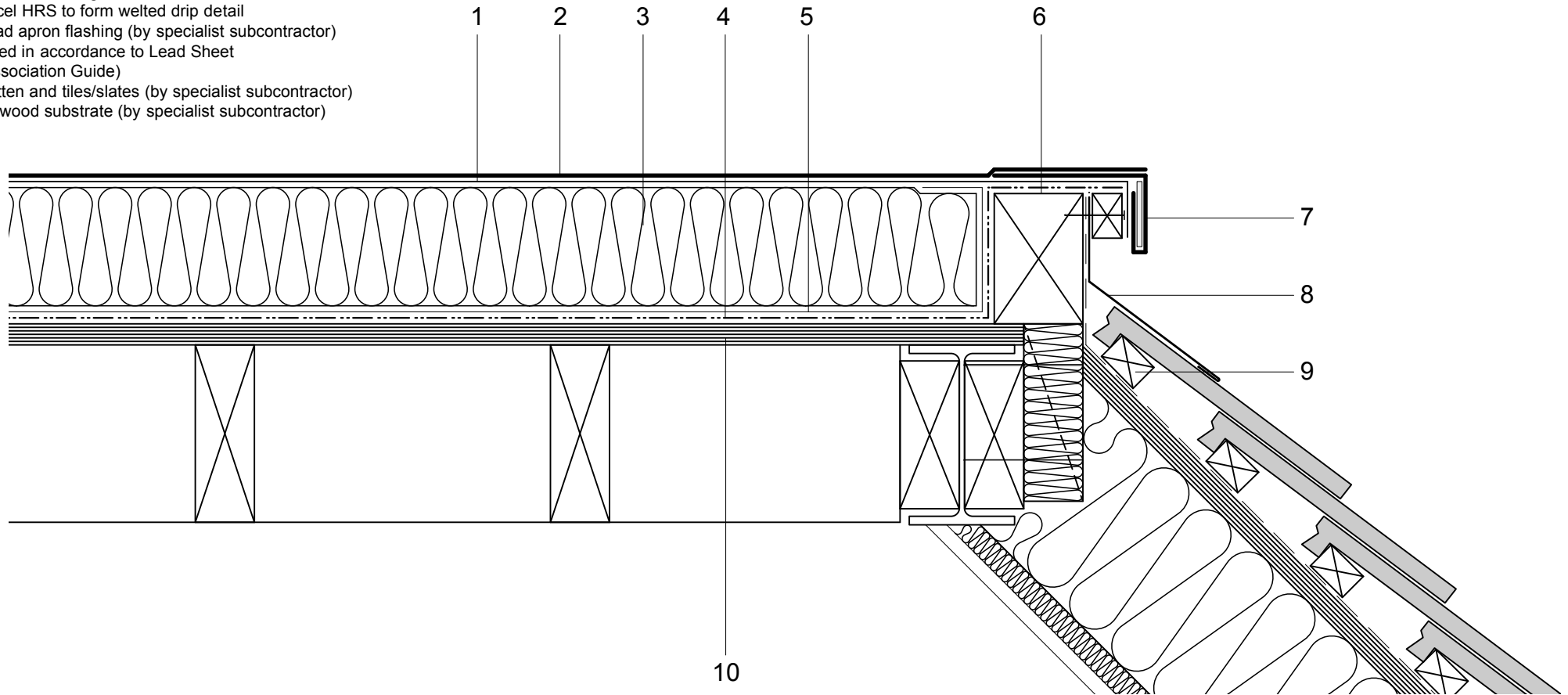


- 1 Hyranger SPOT under-layer
- 2 Excel HRS capping sheet
- 3 Hytherm ADH tapered/flat board
Insulation (thickness to achieve design
U-value and/or design fall)
- 4 Vernis Antac ST primer
- 5 VAP AL SK Vapour Control Layer
- 6 Timber hard edge/batten
- 7 Excel HRS to form welted drip detail
- 8 Lead apron flashing (by specialist subcontractor)
(fixed in accordance to Lead Sheet
Association Guide)
- 9 Batten and tiles/slates (by specialist subcontractor)
- 10 Plywood substrate (by specialist subcontractor)



Do Not Scale. All dimensions to be checked on site by the Axtershield Installer

Axter provides detail drawings as part of our technical design service. Such drawings should only be used as a guide during the design process and should not be utilised during construction. Axter accepts no liability for misuse of this service.

PROJECT
AXTER - STANDARD DETAIL

DRAWING
**AXTER WARM ROOF - EXCEL/SPOT SYSTEM
TYPICAL MANSARD EDGE DETAIL
- PLYWOOD SUBSTRATE**

AXTER LTD
West Road, Ransomes
Europark, Ipswich,
Suffolk, IP3 9SX.
Tel: (01473) 724056
Fax: (01473) 723263
info@axterltd.co.uk



DRAWING NUMBER
WR.P.EX.120

SCALE
1:5 @ A4

DATE
2014