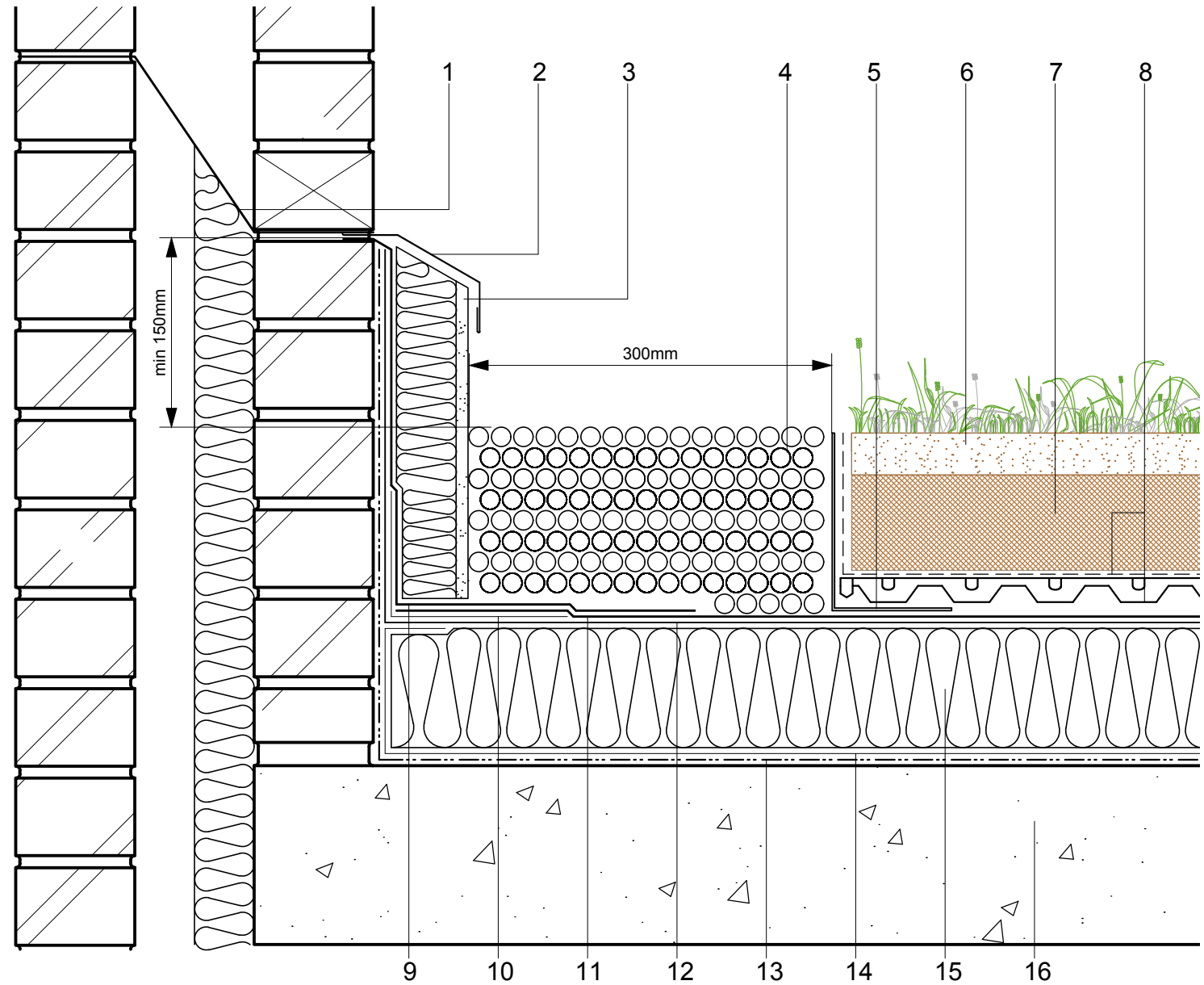


- 1 DPC/cavity tray to drain internally or externally as specified by specialist contractor
- 2 Soft metal flashing by other
- 3 LI XPS pre-rendered upstand insulation board
- 4 Ballast sterile area by specialist contractor
- 5 Axter perforated retaining angle to suit system depth
- 6 Axter living roof vegetation
- NB: Consult Axter for appropriate planting specification
- 7 HYDROSOIL (80mm min. settled depth) dependent on planting specification
- 8 HYDRODRAIN/20 drainage and filtration membrane(dependent on planting - refer Axter specification)
- 9 Force 4000 / 3000 Traffic detail membrane
- 10 35py Angle Strip
- 11 Force 4000 / 3000 Traffic capping membrane
- 12 Axter system under layer
- 13 Vernis Antac ST / Vernis Seal primer
- 14 Axter system vapour control layer
- 15 Hytherm tapered/flat board insulation (thickness to achieve design U value and/or design fall)
- 16 Concrete substrate by specialist subcontractor (laid to minimum 1:80 drainage falls when tapered insulation is not specified)



Axter provide detail drawings as part of our technical design service. Such drawings should only be used as a guide during the design process and should not be utilised during construction. Axter accepts no liability for misuse of this service.

PROJECT	AXTER STANDARD DETAIL		DRAWING			
			CITYFLOR TYPICAL INSULATED PARAPET UPSTAND DETAIL			
CLIENT	N/A	DWG.No	SCALE	DATE	REV	
		CF.C.0916.130	1:5 @A4	09.16	N/A	



www.axter.co.uk  
info@axterltd.co.uk  
01473 724 056

Axter Ltd,  
West Road, Ransomes Europark,  
Ipswich, Suffolk, IP3 9SX