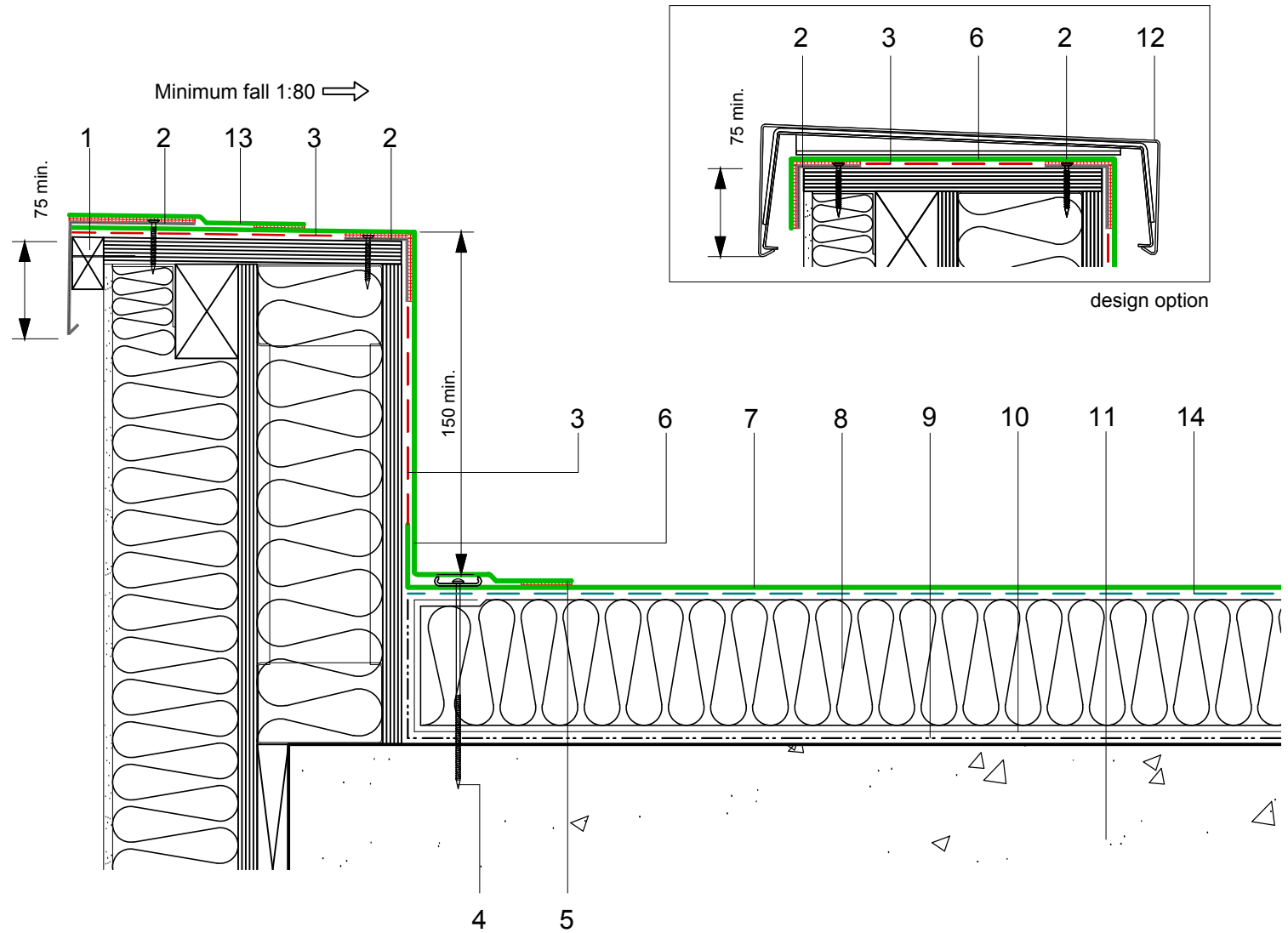


- 1 Timber batten
- 2 ECOMETAL preformed PVC coated metal trim mechanical (MTP) fixing at 200mm ctrs
- 3 FM/D contact adhesive
- 4 Restraint bar and mechanical (C) fixing
- 5 Heat welded seam - 40mm
- 6 ECOFLEX FM single ply membrane
- 7 ECOFLEX ADH fleeceback single ply membrane fully bonded using ADH Adhesive
- 8 Hytherm tapered/flat board Insulation mechanically fixed with Ecoflex insulation washers and fixings (thickness to achieve design U-value and/or design fall)
- 9 Vernis Antac ST primer
- 10 Axter Vapour Control Layer
- 11 Concrete substrate (by specialist subcontractor)
- 12 Metal coping (design option) (by specialist subcontractor)
- 13 ECO/R coverstrip
- 14 ADH Adhesive



Axter provide detail drawings as part of our technical design service. Such drawings should only be used as a guide during the design process and should not be utilised during construction. Axter accepts no liability for misuse of this service.

PROJECT	AXTER - STANDARD DETAIL		DRAWING			
			AXTER WARM ROOF - ECOFLEX ADH SYSTEM TYPICAL PARAPET UPSTAND DETAIL - CONCRETE SUBSTRATE			
CLIENT	N/A	DWG.No	SCALE	DATE	REV	
		WR.C.EF.adh.60	1:5 @ A4	10.16	N/A	

www.axter.co.uk  
info@axterltd.co.uk  
01473 724 056

Axter Ltd.  
West Road, Ransomes Europark,  
Ipswich, Suffolk, IP3 9SX