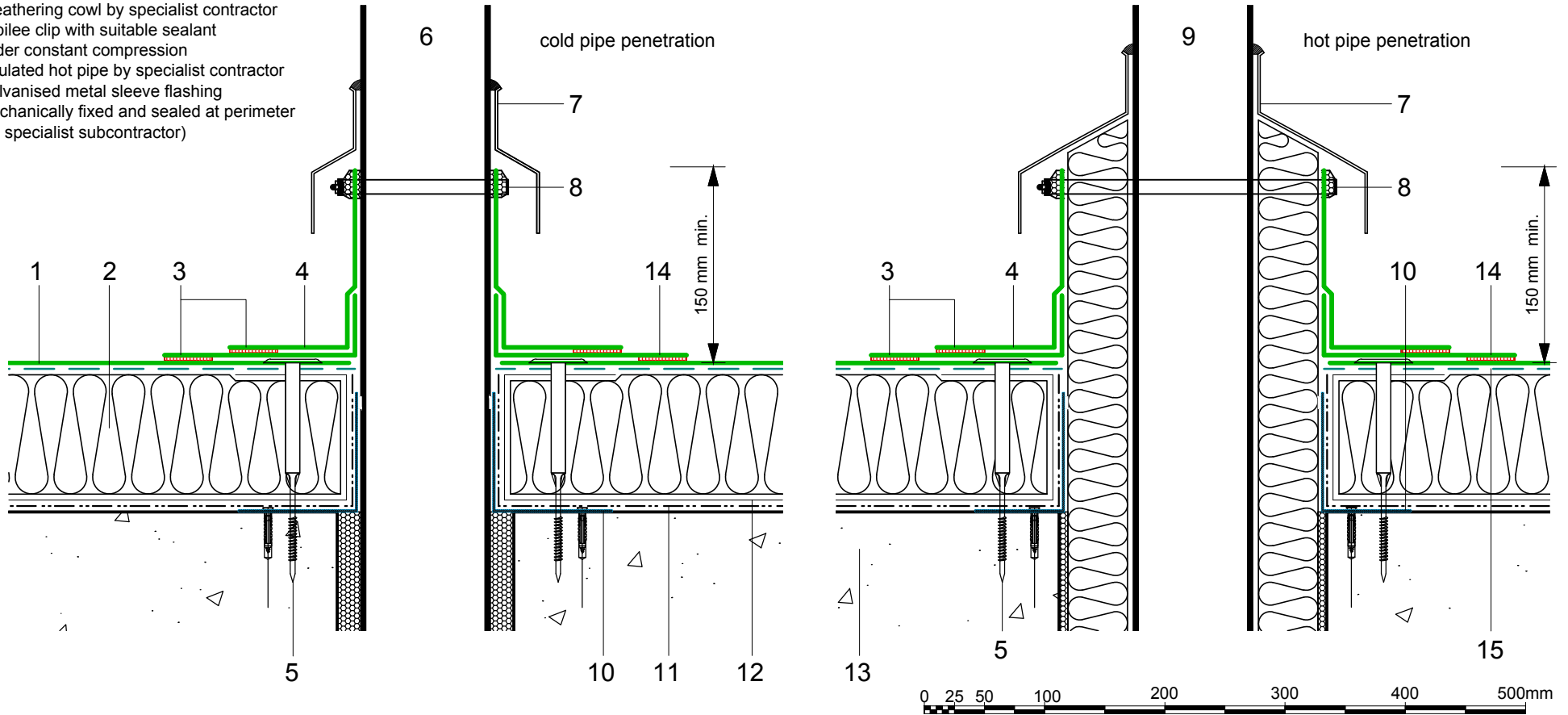


- 1 ECOFLEX ADH fleeceback single ply membrane fully bonded using ADH Adhesive
- 2 Hytherm tapered/flat board Insulation mechanically fixed with Ecoflex insulation washers and fixings (thickness to achieve design U-value and/or design fall)
- 3 Heat welded seam - 40mm
- 4 ECO/D non-reinforced membrane collar
- 5 ECOFLEX Tubular Washer and mechanical fastener (C) fixing Cold pipe by specialist contractor
- 6 Weathering cowl by specialist contractor
- 7 Jubilee clip with suitable sealant under constant compression
- 8 Insulated hot pipe by specialist contractor
- 9 Galvanised metal sleeve flashing mechanically fixed and sealed at perimeter (by specialist subcontractor)
- 10 Vernis Antac ST primer
- 11 Axter Vapour Control Layer
- 12 Concrete substrate (by specialist subcontractor)
- 13 ECOFLEX ADH fleeceback single ply membrane ADH Adhesive
- 14 ECOFLEX ADH fleeceback single ply membrane ADH Adhesive
- 15



Do Not Scale. All dimensions to be checked on site by the Axtersfield Installer

Axter provide detail drawings as part of our technical design service. Such drawings should only be used as a guide during the design process and should not be utilised during construction. Axter accepts no liability for misuse of this service.

PROJECT	AXTER - STANDARD DETAIL	
CLIENT	N/A	

DRAWING	AXTER WARM ROOF - ECOFLEX ADH SYSTEM TYPICAL HOT & COLD PIPE PENETRATION DETAIL - CONCRETE SUBSTRATE			
DWG.No	SCALE	DATE	REV	
WR.C.EF.adh.90	1:5 @ A4	10.16	N/A	



www.axter.co.uk
info@axterltd.co.uk
01473 724 056

Axter Ltd,
West Road, Ransomes Europark,
Ipswich, Suffolk, IP3 9SX