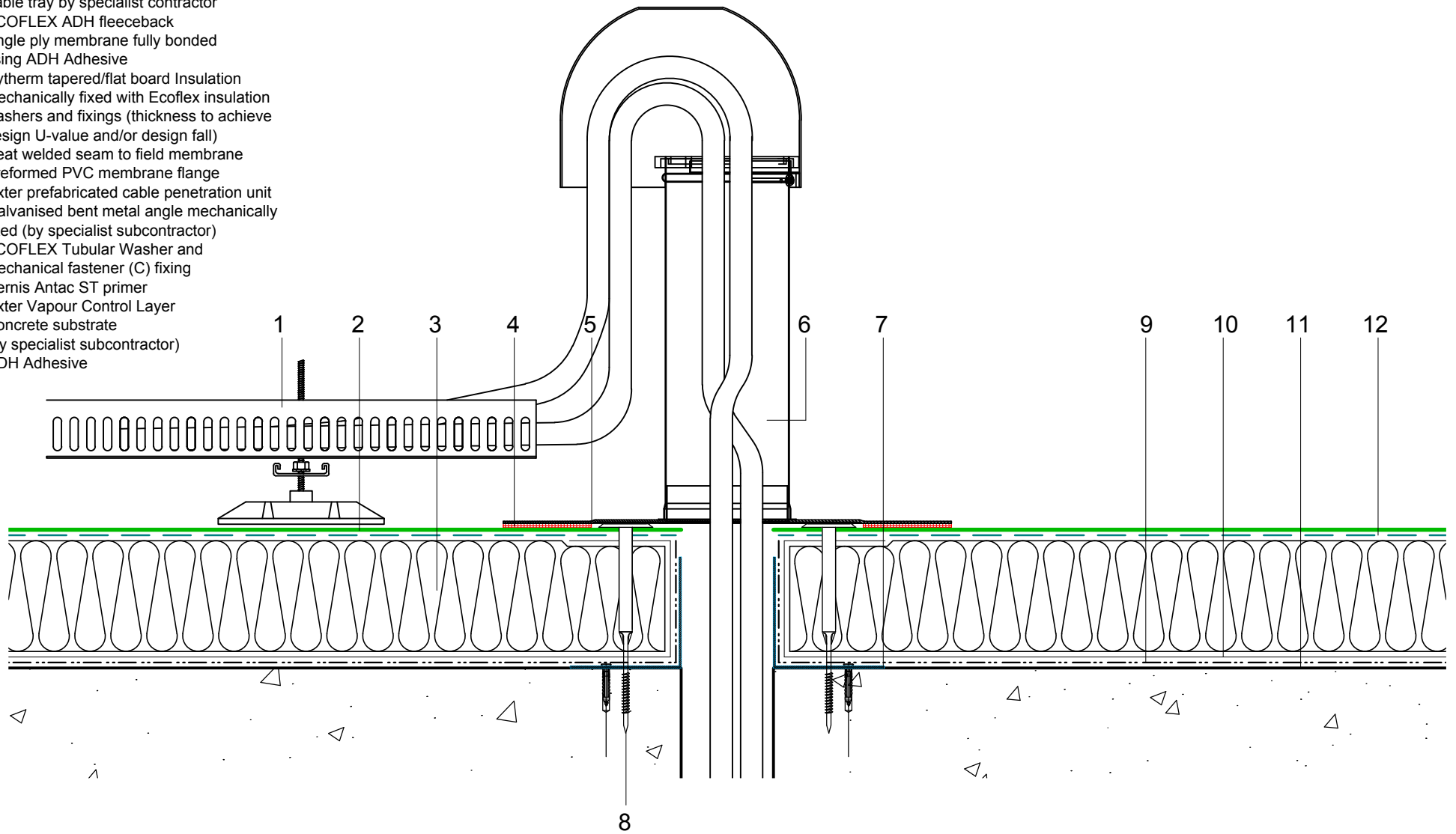


- 1 Cable tray by specialist contractor
- 2 ECOFLEX ADH fleeceback single ply membrane fully bonded using ADH Adhesive
- 3 Hytherm tapered/flat board Insulation mechanically fixed with Ecoflex insulation washers and fixings (thickness to achieve design U-value and/or design fall)
- 4 Heat welded seam to field membrane
- 5 Preformed PVC membrane flange
- 6 Axter prefabricated cable penetration unit
- 7 Galvanised bent metal angle mechanically fixed (by specialist subcontractor)
- 8 ECOFLEX Tubular Washer and mechanical fastener (C) fixing
- 9 Vernis Antac ST primer
- 10 Axter Vapour Control Layer
- 11 Concrete substrate (by specialist subcontractor)
- 12 ADH Adhesive



Do Not Scale. All dimensions to be checked on site by the Axtershield Installer

Axter provide detail drawings as part of our technical design service. Such drawings should only be used as a guide during the design process and should not be utilised during construction. Axter accepts no liability for misuse of this service.

PROJECT	AXTER - STANDARD DETAIL
CLIENT	N/A

DRAWING	AXTER WARM ROOF - ECOFLEX ADH SYSTEM TYPICAL CABLE DUCT PENETRATION DETAIL - CONCRETE SUBSTRATE			
DWG.No	SCALE	DATE	REV	
WR.C.EF.adh.180	1:5 @ A4	10.16	N/A	

www.axter.co.uk
info@axterltd.co.uk
01473 724 056

Axter Ltd,
West Road, Ransomes Europark,
Ipswich, Suffolk, IP3 9SX