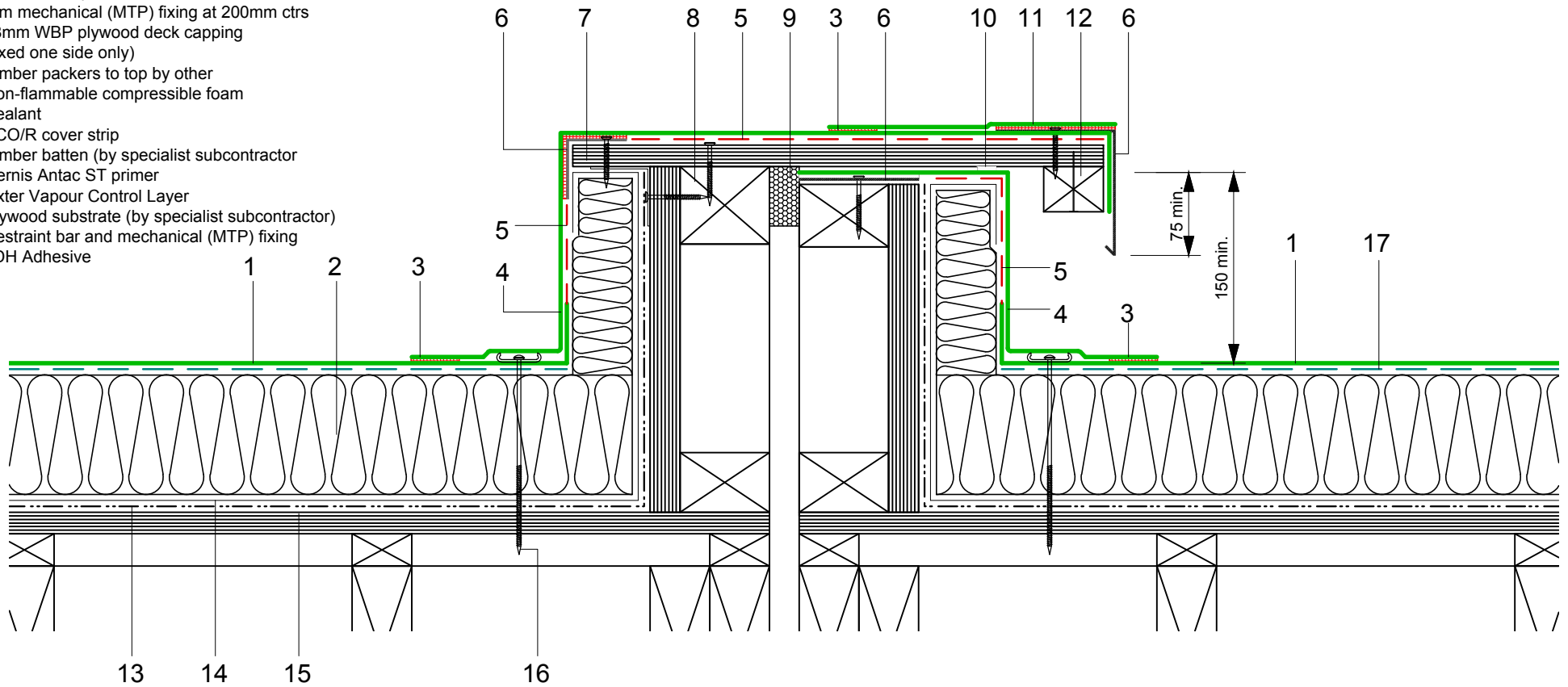


- 1 ECOFLEX ADH fleeceback
single ply membrane fully bonded
using ADH Adhesive
- 2 Hytherm tapered/flat board Insulation
mechanically fixed with Ecoflex insulation
washers and fixings (thickness to achieve
design U-value and/or design fall)
- 3 Heat welded seam - 40mm
- 4 ECOFLEX FM Single Ply Membrane
- 5 FM/D contact adhesive
- 6 ECOMETAL preformed PVC coated metal
trim mechanical (MTP) fixing at 200mm ctrs
- 7 18mm WBP plywood deck capping
(fixed one side only)
- 8 Timber packers to top by other
- 9 Non-flammable compressible foam
- 10 Sealant
- 11 ECO/R cover strip
- 12 Timber batten (by specialist subcontractor)
- 13 Vernis Antac ST primer
- 14 Axter Vapour Control Layer
- 15 Plywood substrate (by specialist subcontractor)
- 16 Restraint bar and mechanical (MTP) fixing
- 17 ADH Adhesive



Do Not Scale. All dimensions to be checked on site by the Axtershield Installer

Axter provide detail drawings as part of our technical design service. Such drawings should only be used as a guide during the design process and should not be utilised during construction. Axter accepts no liability for misuse of this service.

PROJECT	AXTER - STANDARD DETAIL		DRAWING			
			AXTER WARM ROOF - ECOFLEX ADH SYSTEM TYPICAL MOVEMENT JOINT -- TWIN KERB DETAIL - PLYWOOD SUBSTRATE			
CLIENT	N/A	DWG.No	SCALE	DATE	REV	
		WR.P.EF.adh.130	1:5 @ A4	10.16	N/A	



www.axter.co.uk
info@axterltd.co.uk
01473 724 056

Axter Ltd.
West Road, Ransomes Europark,
Ipswich, Suffolk, IP3 9SX