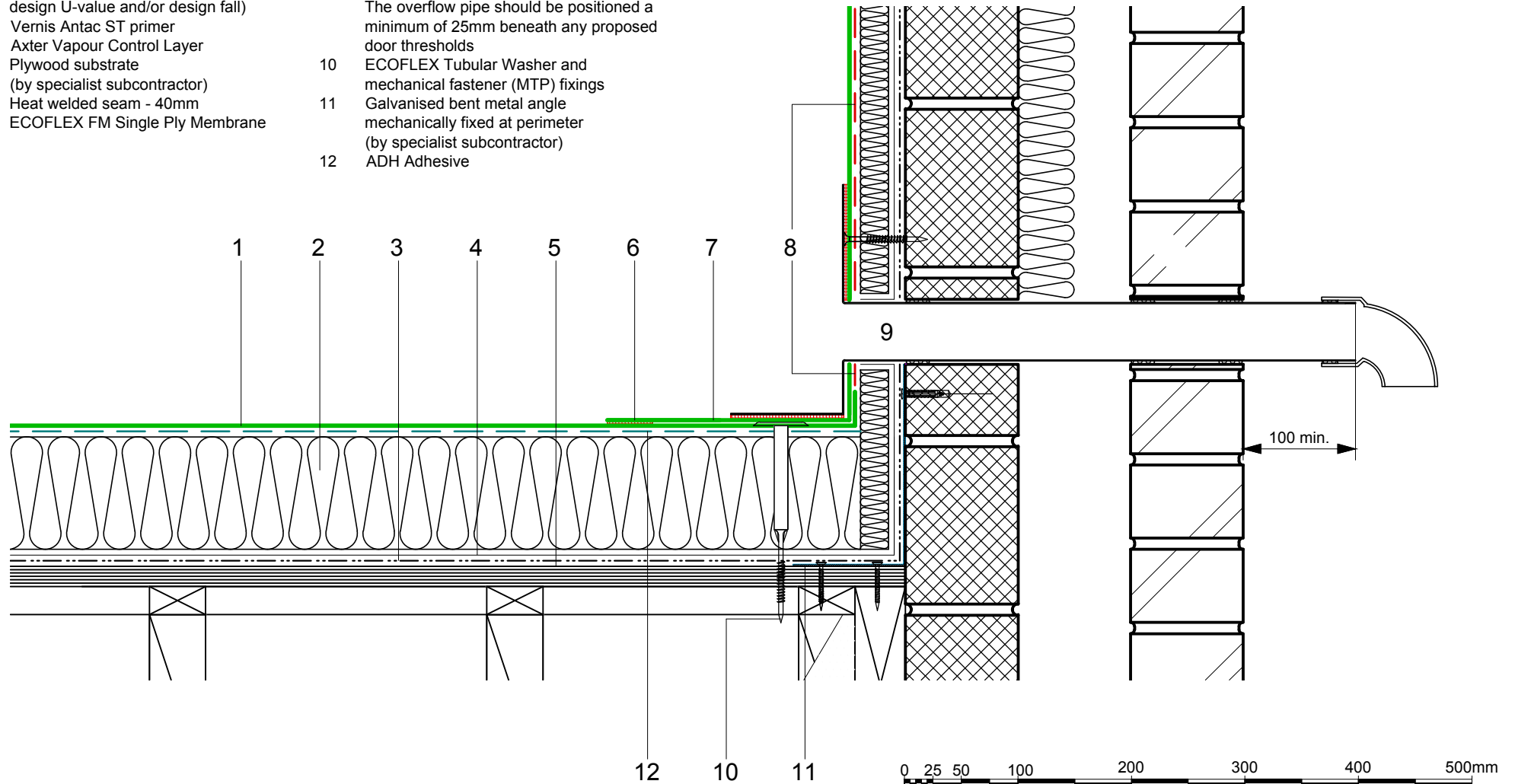


- | | | | |
|---|---|----|--|
| 1 | ECOFLEX ADH fleeceback single ply membrane fully bonded using ADH Adhesive | 8 | FM/D contact adhesive |
| 2 | Hytherm tapered/flat board Insulation mechanically fixed with Ecoflex insulation washers and fixings (thickness to achieve design U-value and/or design fall) | 9 | Axter RO overflow outlet with preformed PVC membrane flange (heat welded seam to field membrane) with pipe extension as required to suit parapet width - dimensions to be taken on site (90° downturn) |
| 3 | Vernis Antac ST primer | | The overflow pipe should be positioned a minimum of 25mm beneath any proposed door thresholds |
| 4 | Axter Vapour Control Layer | 10 | ECOFLEX Tubular Washer and mechanical fastener (MTP) fixings |
| 5 | Plywood substrate (by specialist subcontractor) | 11 | Galvanised bent metal angle mechanically fixed at perimeter (by specialist subcontractor) |
| 6 | Heat welded seam - 40mm | 12 | ADH Adhesive |
| 7 | ECOFLEX FM Single Ply Membrane | | |



0 25 50 100 200 300 400 500mm

Do Not Scale. All dimensions to be checked on site by the Axtershield Installer

Axter provide detail drawings as part of our technical design service. Such drawings should only be used as a guide during the design process and should not be utilised during construction. Axter accepts no liability for misuse of this service.

PROJECT	AXTER - STANDARD DETAIL
CLIENT	N/A

DRAWING	AXTER WARM ROOF - ECOFLEX ADH SYSTEM TYPICAL OVERFLOW DETAIL - PLYWOOD SUBSTRATE			
DWG.No	SCALE	DATE	REV	
WR.P.EF.adh.150	1:5 @ A4	10.16	N/A	



www.axter.co.uk
info@axterltd.co.uk
01473 724 056

Axter Ltd.
West Road, Ransomes Europark,
Ipswich, Suffolk, IP3 9SX