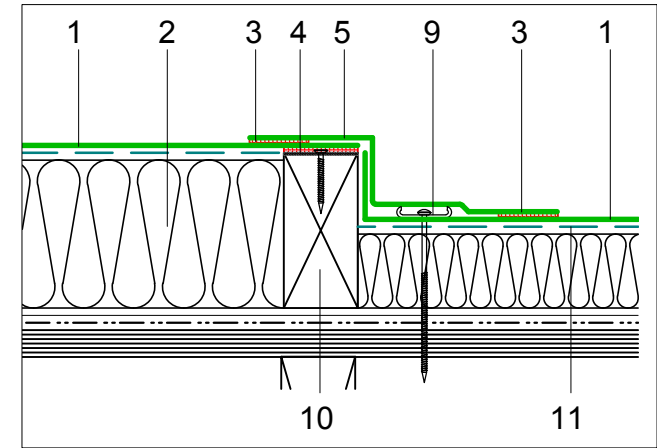
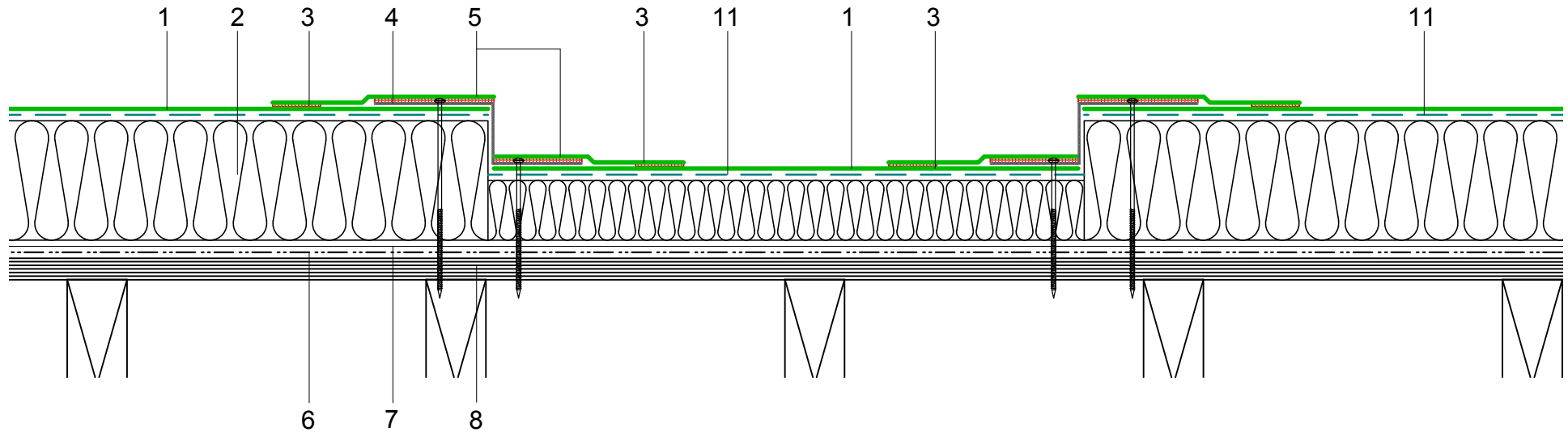


- 1 ECOFLEX ADH fleeceback single ply membrane fully bonded using ADH Adhesive
- 2 Hytherm tapered/flat board Insulation mechanically fixed with Ecoflex insulation washers and fixings (thickness to achieve design U-value and/or design fall) Reduced thickness to form gutter
- 3 Heat welded seam - 40mm
- 4 ECOMETAL preformed PVC coated metal with mechanical (MTP) fixings at 200mm ctrs
- 5 ECO/R cover strip
- 6 Vernis Antac ST primer
- 7 Axter Vapour Control Layer
- 8 Plywood substrate (by specialist subcontractor)
- 9 Restraint bar and mechanical (MTP) fixing
- 10 Mechanically fixed hard edge (by specialist subcontractor)
- 11 ADH Adhesive



design option



Do Not Scale. All dimensions to be checked on site by the Axtershield Installer

Axter provide detail drawings as part of our technical design service. Such drawings should only be used as a guide during the design process and should not be utilised during construction. Axter accepts no liability for misuse of this service.

PROJECT	AXTER - STANDARD DETAIL		DRAWING			
			AXTER WARM ROOF - ECOFLEX ADH SYSTEM TYPICAL INTERNAL GUTTER DETAIL - PLYWOOD SUBSTRATE			
CLIENT	N/A	DWG.No	SCALE	DATE	REV	
		WR.P.EF.adh.190	1:5 @ A4	10.16	N/A	



www.axter.co.uk
info@axterltd.co.uk
01473 724 056

Axter Ltd.
West Road, Ransomes Europark,
Ipswich, Suffolk, IP3 9SX