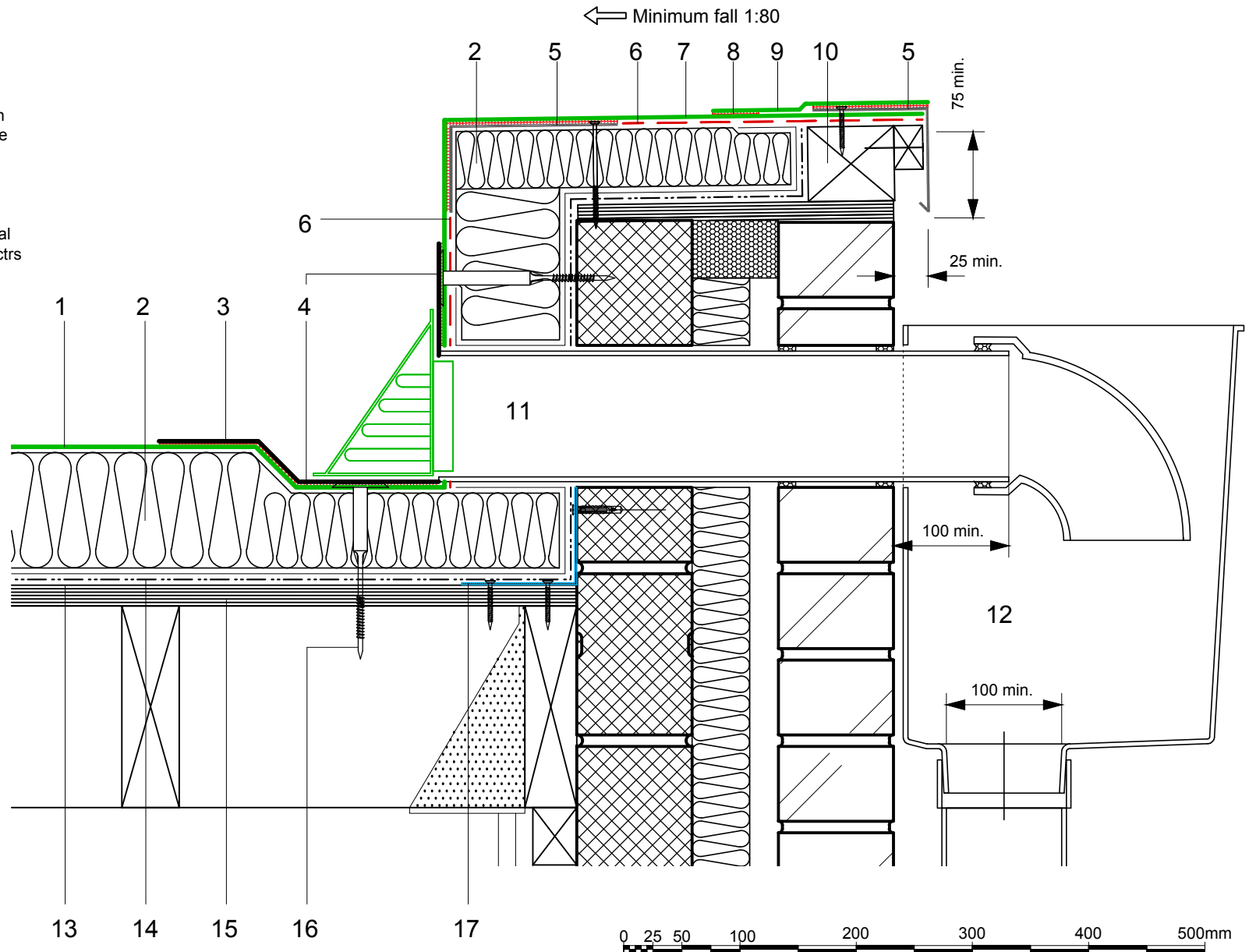


- 1 ECOFLEX FM single ply membrane mechanically fixed with Ecoflex membrane washers and (MTP) fixings
- 2 Hytherm tapered/flat board Insulation mechanically fixed with Ecoflex insulation washers and fixings (thickness to achieve design U-value and/or design fall)
- 3 Preformed outlet with PVC membrane flange
- 4 Heat welded seam to field membrane
- 5 ECOMETAL preformed PVC coated metal trim mechanical (MTP) fixing at 200mm ctrs
- 6 FM/D contact adhesive
- 7 ECOFLEX FM single ply membrane
- 8 Heat welded seam - 40mm
- 9 ECO/R cover strip
- 10 Mechanically fixed hard edge/batten (by specialist subcontractor)
- 11 Axter SF 110 parapet outlet - leaf guard to suit with extension pipe as required to suit parapet width - dimensions to be taken on site (90° downturn to hopper)
- 12 Hopper (by specialist subcontractor)
- 13 Vernis Antac ST primer
- 14 Axter Vapour Control Layer
- 15 Plywood substrate (by specialist subcontractor)
- 16 ECOFLEX Tubular Washer and mechanical fastener (MTP) fixing
- 17 Galvanised bent metal angle mechanically fixed at perimeter (by specialist subcontractor)



Do Not Scale. All dimensions to be checked on site by the Axtershield Installer

Axter provide detail drawings as part of our technical design service. Such drawings should only be used as a guide during the design process and should not be utilised during construction. Axter accepts no liability for misuse of this service.

PROJECT	AXTER - STANDARD DETAIL
CLIENT	N/A

DRAWING	AXTER WARM ROOF - ECOFLEX FM SYSTEM TYPICAL PARAPET RAIN WATER OUTLET DETAIL - PLYWOOD SUBSTRATE			
DWG.No	SCALE	DATE	REV	
WR.P.EF.fm.70	1:5 @ A4	10.16	N/A	



www.axter.co.uk  
info@axterltd.co.uk  
01473 724 056

Axter Ltd.  
West Road, Ransomes Europark,  
Ipswich, Suffolk, IP3 9SX