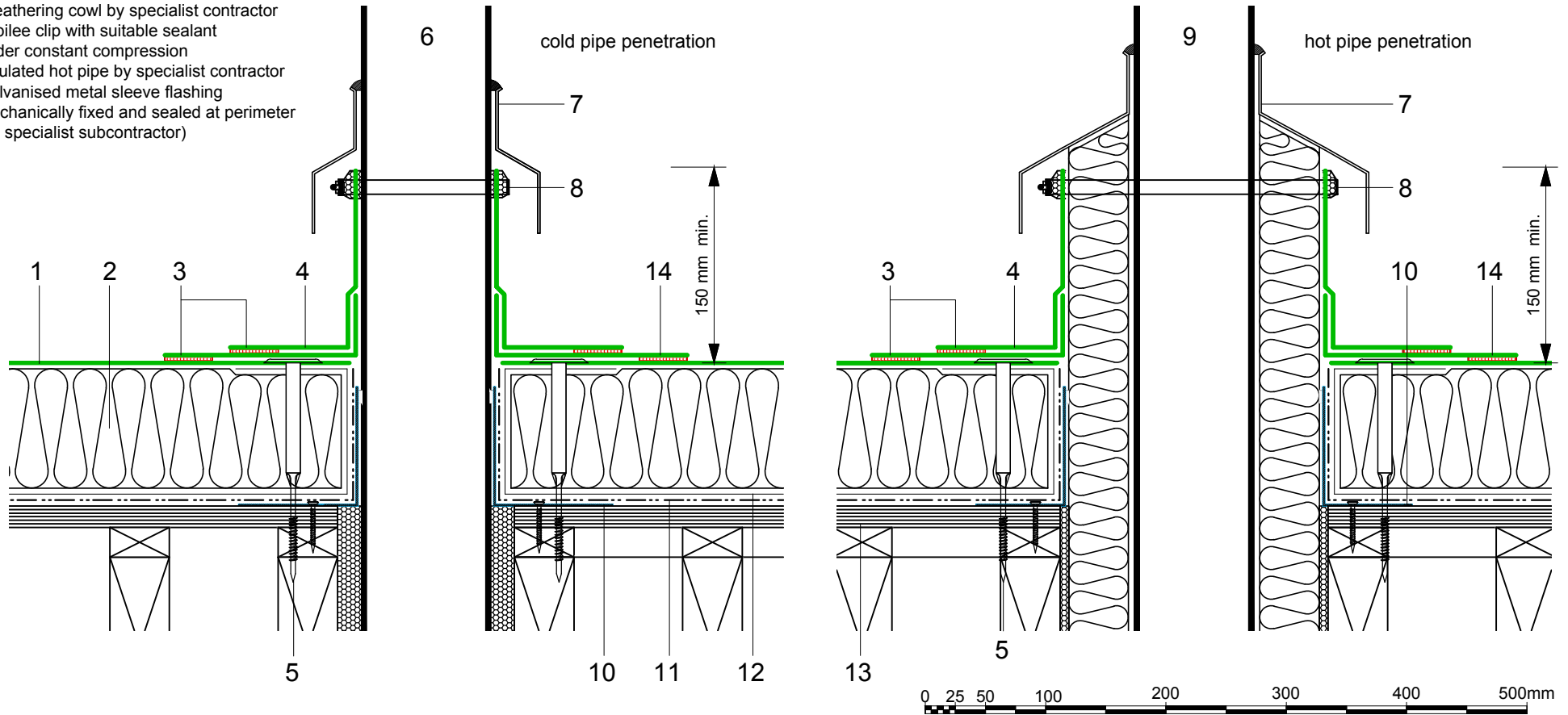


- | | | | |
|----|---|----|---|
| 1 | ECOFLEX FM single ply membrane mechanically fixed with Ecoflex membrane washers and (MTP) fixings | 11 | Vernis Antac ST primer |
| 2 | Hytherm tapered/flat board Insulation mechanically fixed with Ecoflex insulation washers and fixings (thickness to achieve design U-value and/or design fall) | 12 | Axter Vapour Control Layer |
| 3 | Heat welded seam - 40mm | 13 | Plywood substrate (by specialist subcontractor) |
| 4 | ECO/D non-reinforced membrane collar | 14 | ECOFLEX FM single ply membrane |
| 5 | ECOFLEX Tubular Washer and mechanical fastener (MTP) fixing | | |
| 6 | Cold pipe by specialist contractor | | |
| 7 | Weathering cowl by specialist contractor | | |
| 8 | Jubilee clip with suitable sealant under constant compression | | |
| 9 | Insulated hot pipe by specialist contractor | | |
| 10 | Galvanised metal sleeve flashing mechanically fixed and sealed at perimeter (by specialist subcontractor) | | |



Axter provide detail drawings as part of our technical design service. Such drawings should only be used as a guide during the design process and should not be utilised during construction. Axter accepts no liability for misuse of this service.

PROJECT	AXTER - STANDARD DETAIL
CLIENT	N/A

DRAWING	AXTER WARM ROOF - ECOFLEX FM SYSTEM TYPICAL HOT & COLD PIPE PENETRATION DETAIL - PLYWOOD SUBSTRATE		
DWG.No	SCALE	DATE	REV
WR.P.EF.fm.90	1:5 @ A4	10.16	N/A



www.axter.co.uk
info@axterltd.co.uk
01473 724 056

Axter Ltd.
West Road, Ransomes Europark,
Ipswich, Suffolk, IP3 9SX