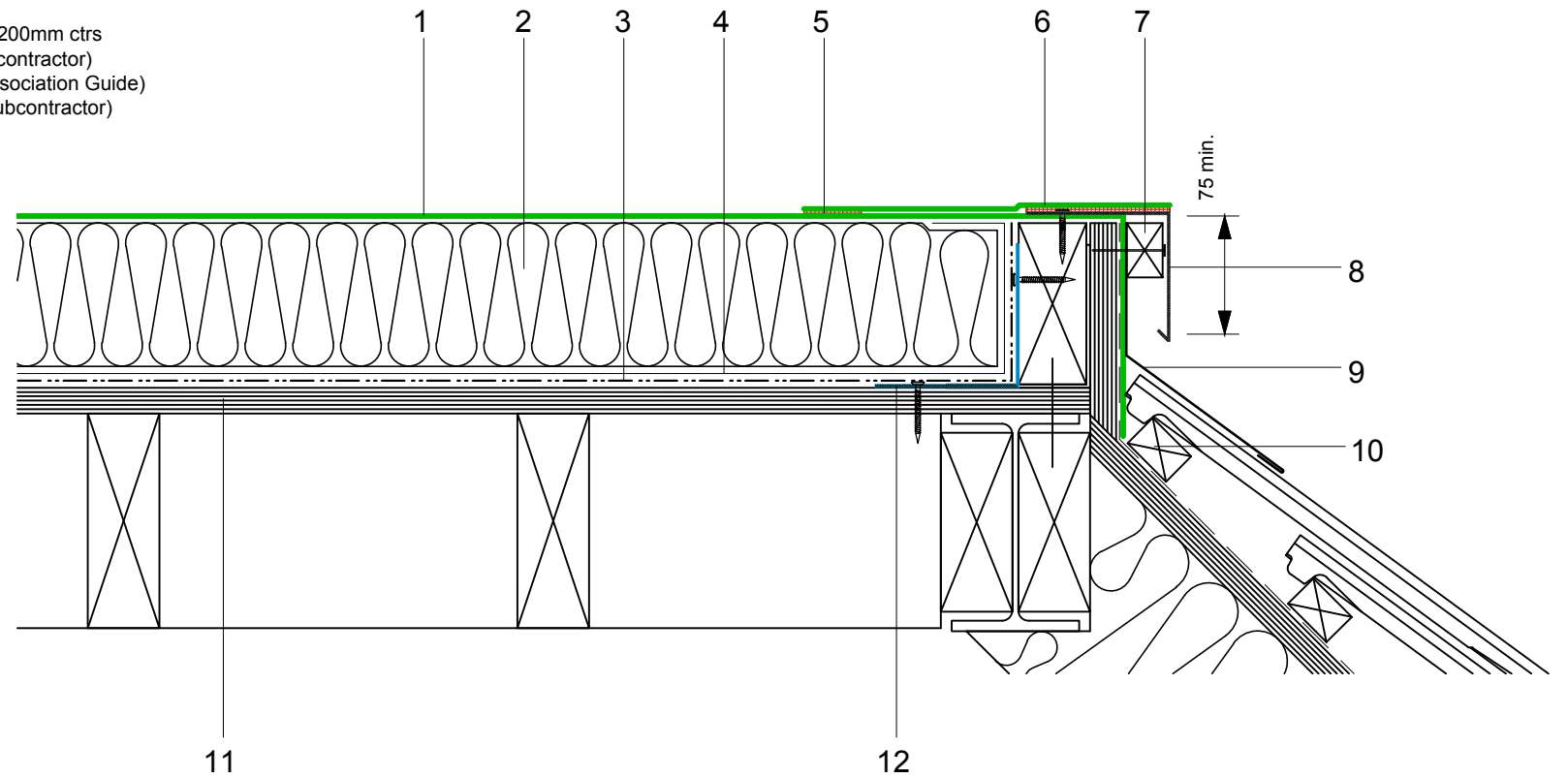


- 1 ECOFLEX FM single ply membrane mechanically fixed with Ecoflex membrane washers and (MTP) fixings
- 2 Hytherm tapered/flat board Insulation mechanically fixed with Ecoflex insulation washers and fixings (thickness to achieve design U-value and/or design fall)
- 3 Vernis Antac ST primer
- 4 Axter Vapour Control Layer
- 5 Heat welded seam - 40mm
- 6 ECO/R cover strip
- 7 Mechanically fixed hard edge/batten (by specialist subcontractor)
- 8 ECOMETAL preformed PVC coated metal trim mechanical (MTP) fixing at 200mm ctrs
- 9 Lead apron flashing (by specialist subcontractor) (fixed in accordance to Lead Sheet Association Guide)
- 10 Batten and tiles/slates (by specialist subcontractor)
- 11 Plywood substrate (by specialist subcontractor)
- 12 Galvanised bent metal angle mechanically fixed at perimeter (by specialist subcontractor)



0 25 50 100 200 300 400 500mm
 Do Not Scale. All dimensions to be checked on site by the Axtershield Installer

Axter provide detail drawings as part of our technical design service. Such drawings should only be used as a guide during the design process and should not be utilised during construction. Axter accepts no liability for misuse of this service.

PROJECT	AXTER - STANDARD DETAIL
CLIENT	N/A

DRAWING	AXTER WARM ROOF - ECOFLEX FM SYSTEM TYPICAL MANSARD EDGE DRIP DETAIL - PLYWOOD SUBSTRATE			
DWG.No	SCALE	DATE	REV	
WR.P.EF.fm.110	1:5 @ A4	10.16	N/A	



www.axter.co.uk
 info@axterltd.co.uk
 01473 724 056

Axter Ltd.
 West Road, Ransomes Europark,
 Ipswich, Suffolk, IP3 9SX